



**Wolsey Street, Ipswich,
Suffolk, IP1 1AF
Offers In Excess Of £120,000
Leasehold**

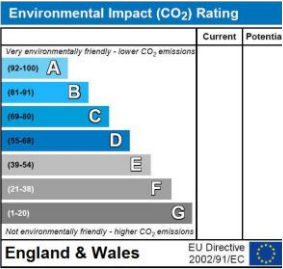
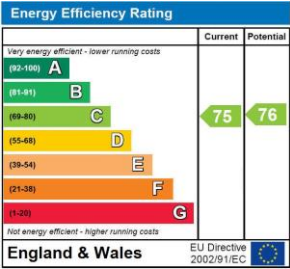
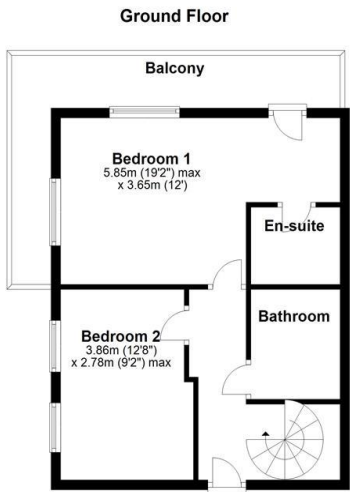
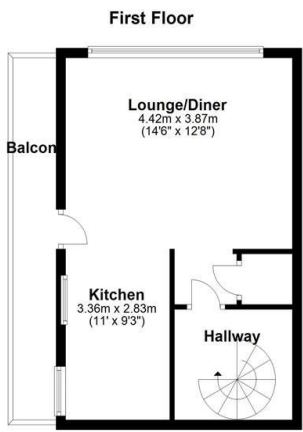
*** CASH BUYERS ONLY *** This stunning two bedroom fourth floor duplex apartment, located in the heart of Ipswich town centre and ideally located for Ipswich train station, provides views across the town from the balconies and comes with secure allocated parking, secure entry system, is lift serviced, and is being sold with no onward chain. As agents, we recommend the earliest possible internal viewing to appreciate the quality of accommodation on offer which comprises entrance hall; bathroom; two bedrooms, one of which has a balcony and en-suite shower room; with the open plan kitchen / living / dining room being on the upper floor, the kitchen having integrated appliances and the living / dining room having a balcony.

Agents note:

CASH BUYERS ONLY

Palmer & Partners have been informed by the management company that the cladding on the block will have to be removed but no costs for this removal and reinstatement will be the responsibility of the new owners. For further information on the schedule, please contact us.

The county town of Ipswich offers a range of local amenities including schools, university, shops, doctors, dental surgeries, hospital, two theatres, parks including the popular Orwell Country Park, recreational facilities, and mainline railway station providing direct links to London Liverpool Street Station. The town has also undergone an extensive rebuilding and a gentrification programme principally around the vibrant waterfront which now boasts some lovely bars and restaurants.



Palmer and Partners would like to draw your attention to the following: I] these particulars do not constitute part of an offer or contract. II] these particulars and any pictures or plans represent the opinion of the author and are given in good faith for guidance only and must not be construed as statement or fact. III] nothing in these particulars shall be deemed a statement that the property is not in good condition or otherwise. We have not carried out a structural survey of the property and have not tested services, appliances and special fittings IV] measurements are generally taken by the use of a sonic measuring machine and will usually be the largest measurements of the room in question.