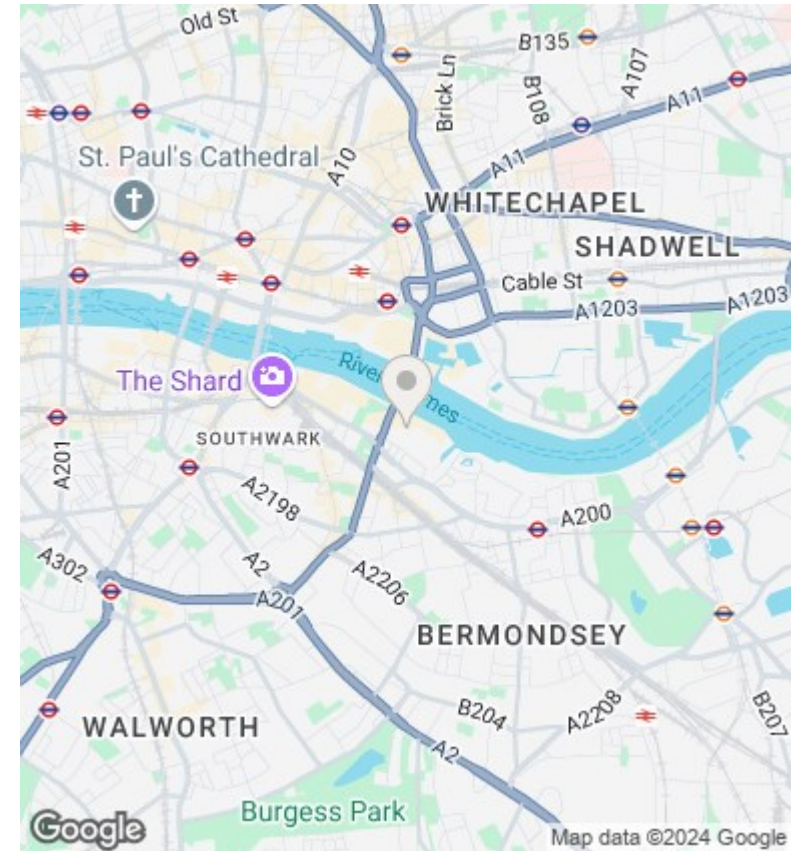
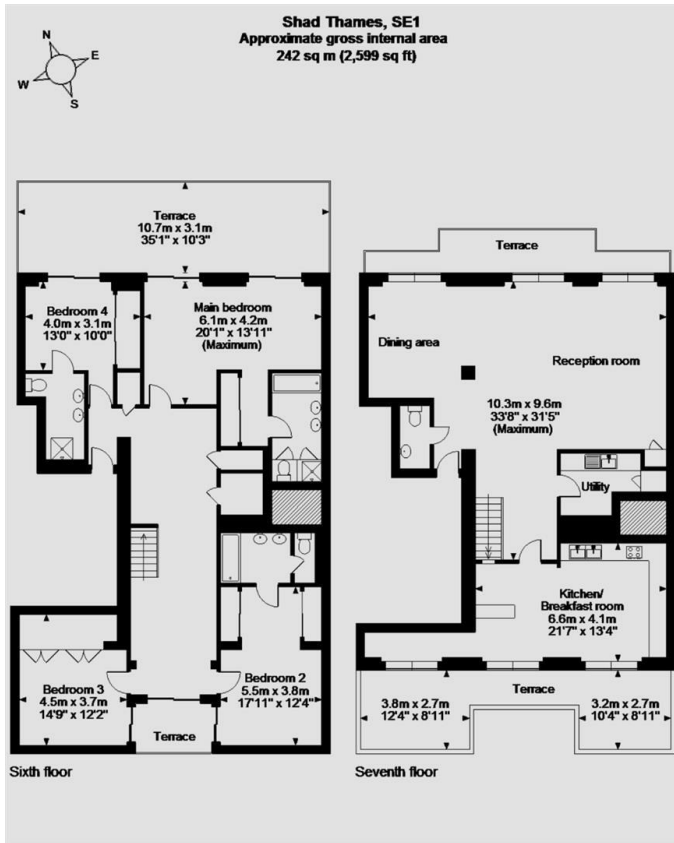




Butlers Wharf, Shad Thames, London Bridge, London SE1 2YE

£5,810,000

- PENTHOUSE
- SEPERATE EAT IN KITCHEN , DINNING ROOM
- AMZING VIEWS OF RIVER AND TOWER BRIDGE
- 24H CONCIERGE
- 4 PRIVATE TERRACES
- WALKING DISTANCE TO LONDON BRIDGE STATION
- 4 BEDROOMS , 3 BATHROOMS AND GUESST WC
- VIDEO VIEWING AVAILALBE



Viewings

Viewings by arrangement only.
Call 02077225022 to make an appointment.

Council Tax Band

D

EPC Rating:

C

Energy Efficiency Rating		
	Current	Potential
Very energy efficient - lower running costs		
(92 plus) A		
(81-91) B		
(69-80) C	76	
(55-68) D		
(39-54) E		
(21-38) F		
(1-20) G		
Not energy efficient - higher running costs		
England & Wales	EU Directive 2002/91/EC	