



A THREE BEDROOM SEMI-DETACHED HOME IN OXHEY HALL

Hillcroft Crescent, Oxhey Hall, Watford, Hertfordshire, WD19 4PB

ROBSONS

A THREE BEDROOM SEMI-DETACHED HOME IN OXHEY HALL

Hillcroft Crescent, Oxhey Hall, Watford,
Hertfordshire WD19 4PB

- HALLWAY
- RECEPTION ROOM
- DINING ROOM
- KITCHEN
- THREE BEDROOMS
- SHOWER ROOM
- SEPARATE W/C
- REAR GARDEN

Description

An attractive 1930's, three bedroom semi-detached house ideally positioned in the sought after Oxhey Hall conservation area.

Offered for sale with the benefit of no upper chain, the property comprises a welcoming entrance hall leading into a spacious front reception room with a bay window, a rear reception room with views over the large enclosed rear garden and a fitted kitchen with side access to the garden.





Description Continued

The first floor offers two double bedrooms, a generous single bedroom, a family shower room and separate WC.

The rear garden extends to approximately 150 feet in length and is mostly laid to lawn with mature shrub and flower bed borders. The attractive frontage offers a driveway providing off street parking a side access gates.

Location

Oxhey Hall is a beautiful part of Watford, designated as a Conservation Area, containing quiet tree lined roads off Hampermill Lane towards Moor Park and Northwood. There are good local amenities including Moor Park underground station and Bushey main line station (which is within walking distance) with fast trains into Euston. Highly regarded schools such as Merchant Taylors and Eastbury Farm are also just a short drive away. The area benefits from an hourly bus service which also connects to the local schools.

Additional Information

Tenure: Freehold

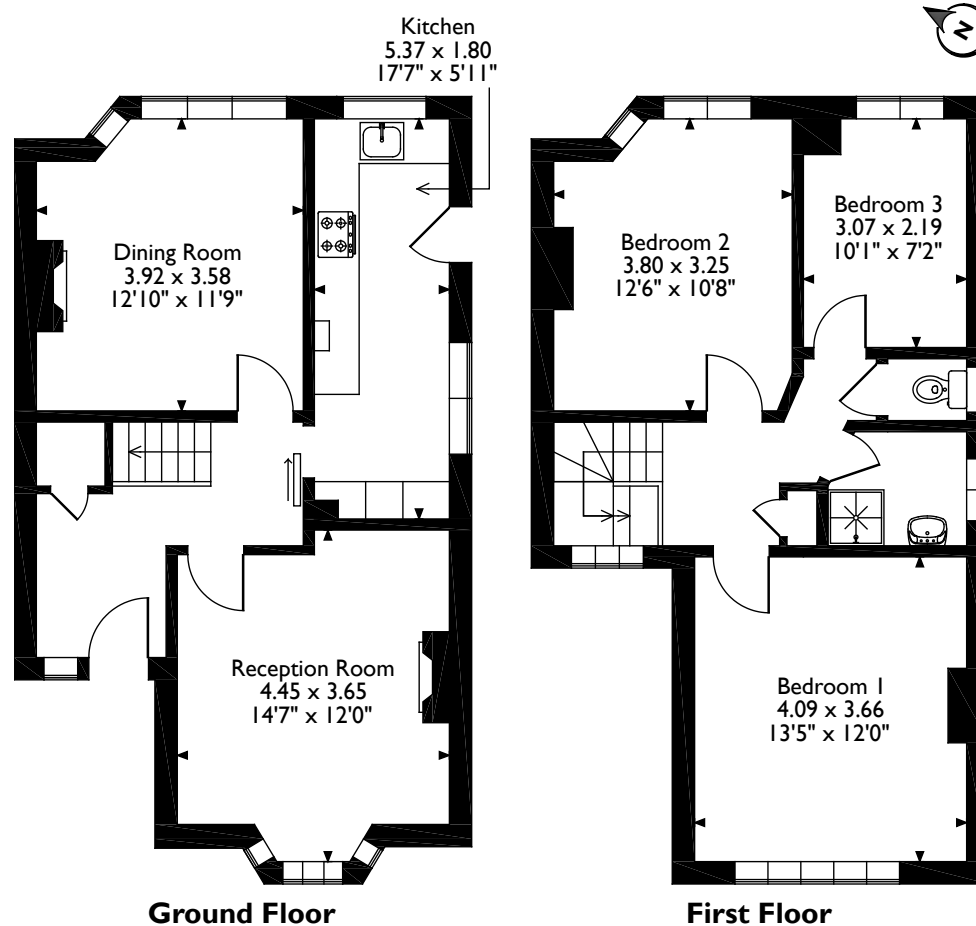
Local Authority: Three Rivers District Council

Council Tax: Band E

Energy Efficiency Rating: E



Hillcroft Crescent, Watford, Hertfordshire
Approximate Gross Internal Area
95 Sq M/1023 Sq Ft



Please note that the location of doors, windows and other items are approximate and this floorplan is to be used for illustrative purposes only. Unauthorized reproduction is prohibited.

ROBSONS

The Estate Office, North Approach, Moor Park, Middlesex HA6 2JQ

Tel: 01923 820622 moorpark@robsonswb.com

www.robsonswb.com

Important notice: Robsons, their clients and any joint agents give notice that 1: They are not authorised to make or give any representations or warranties in relation to the property either here or elsewhere, either on their own behalf or on behalf of their client or otherwise. They assume no responsibility for any statement that may be made in these particulars. These particulars do not form part of any offer or contract and must not be relied upon as statements or representations of fact. 2: Any areas, measurements or distances are approximate. Plot sizes and dimensions are taken from Promap and are approximate. The text, photographs and plans are for guidance only and are not necessarily comprehensive. It should not be assumed that the property has all necessary planning, building regulation or other consents and Robsons have not tested any services, equipment or facilities. Purchasers must satisfy themselves by inspection or otherwise.