



## 54 Wellesley Road, Great Yarmouth

Guide Price £425,000

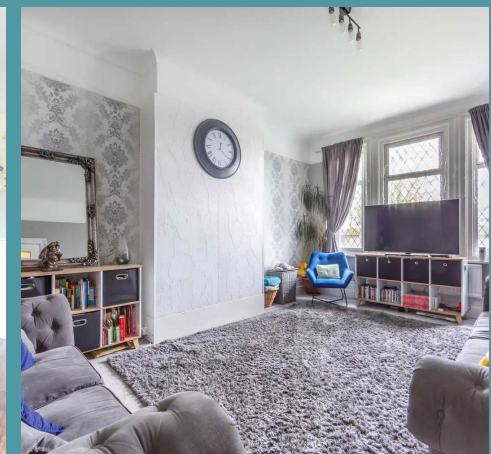
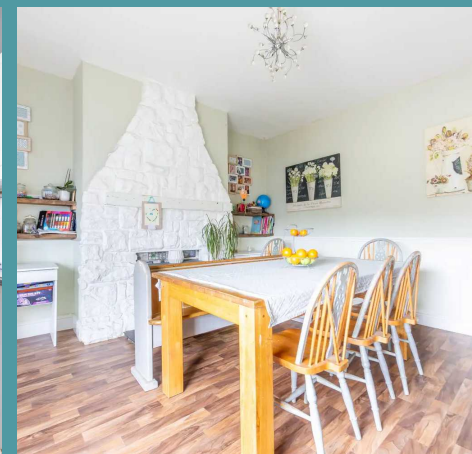
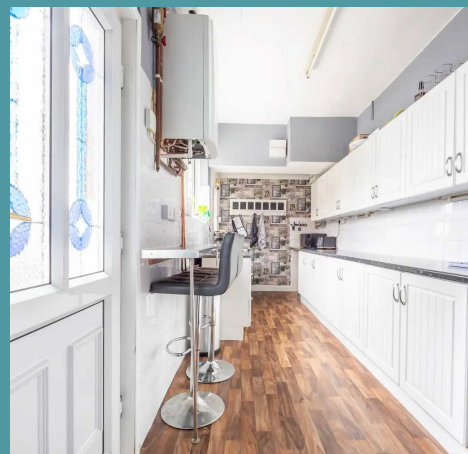
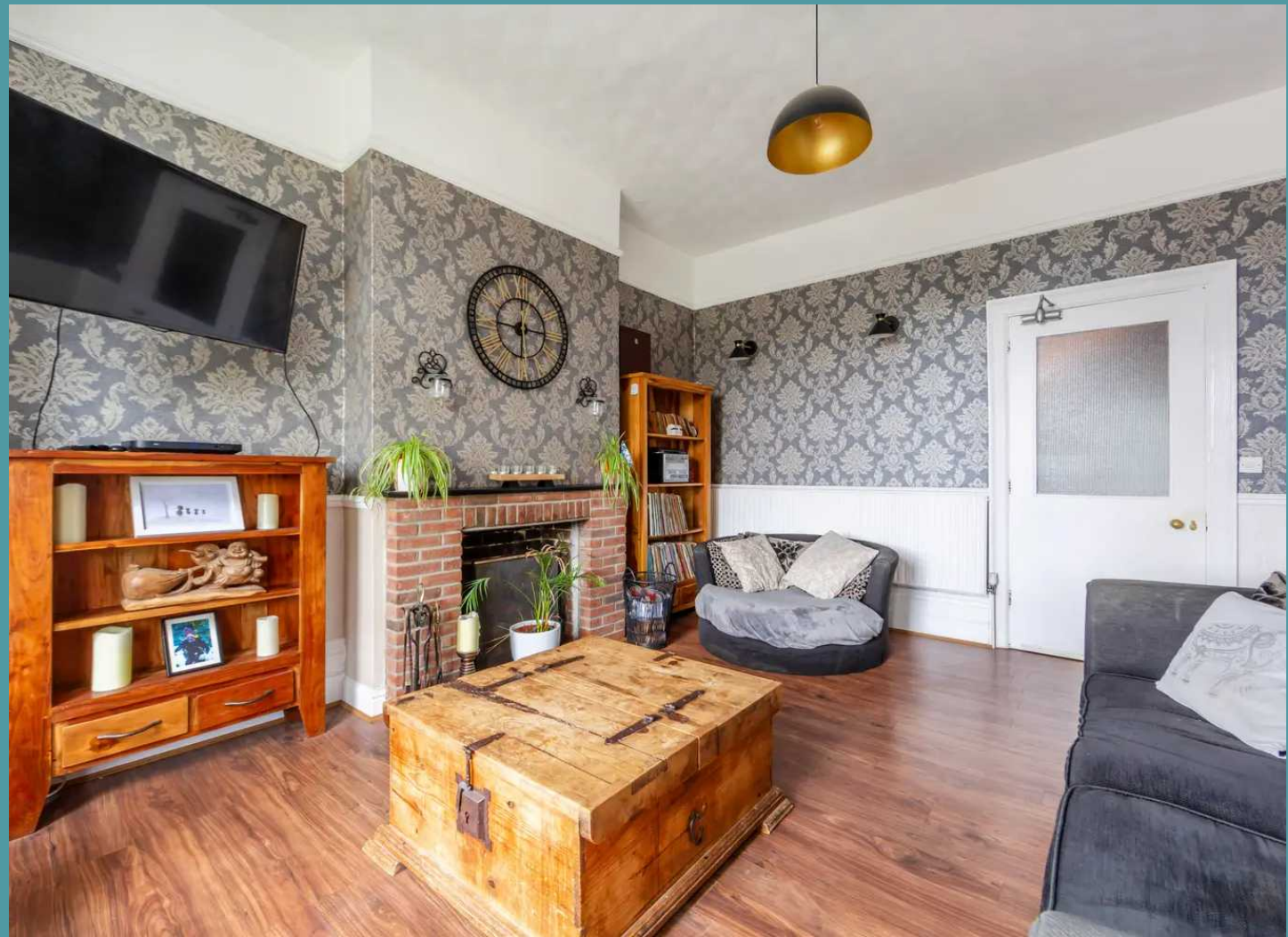
# 54 Wellesley Road

## Great Yarmouth

This exceptional nine bedroom three-story guest house, built in 1890, is the perfect abode to embrace luxurious family living while accommodating a dynamic lifestyle. Situated within walking distance to the beach, this property offers a serene escape yet remains conveniently accessible to urban amenities. Don't miss the chance to acquire this incredible residence that holds plenty of potential.

### LOCATION

Wellesley Road, located in the vibrant coastal town of Great Yarmouth, offers a convenient and well-connected setting for residents. Situated in the heart of this bustling seaside town, Wellesley Road provides easy access to an array of amenities, including local shops, restaurants, schools, and recreational facilities. Great Yarmouth is celebrated for its picturesque coastline, offering pristine sandy beaches and stunning seafront promenades, perfect for leisurely strolls and enjoying the sea breeze. The town is rich in history and culture, with numerous historical landmarks and attractions, including the iconic Britannia Pier and the Sea Life Centre. This location benefits from excellent transportation links, ensuring swift commutes to nearby towns and cities, making Wellesley Road an ideal spot for those looking to embrace coastal living with urban convenience.

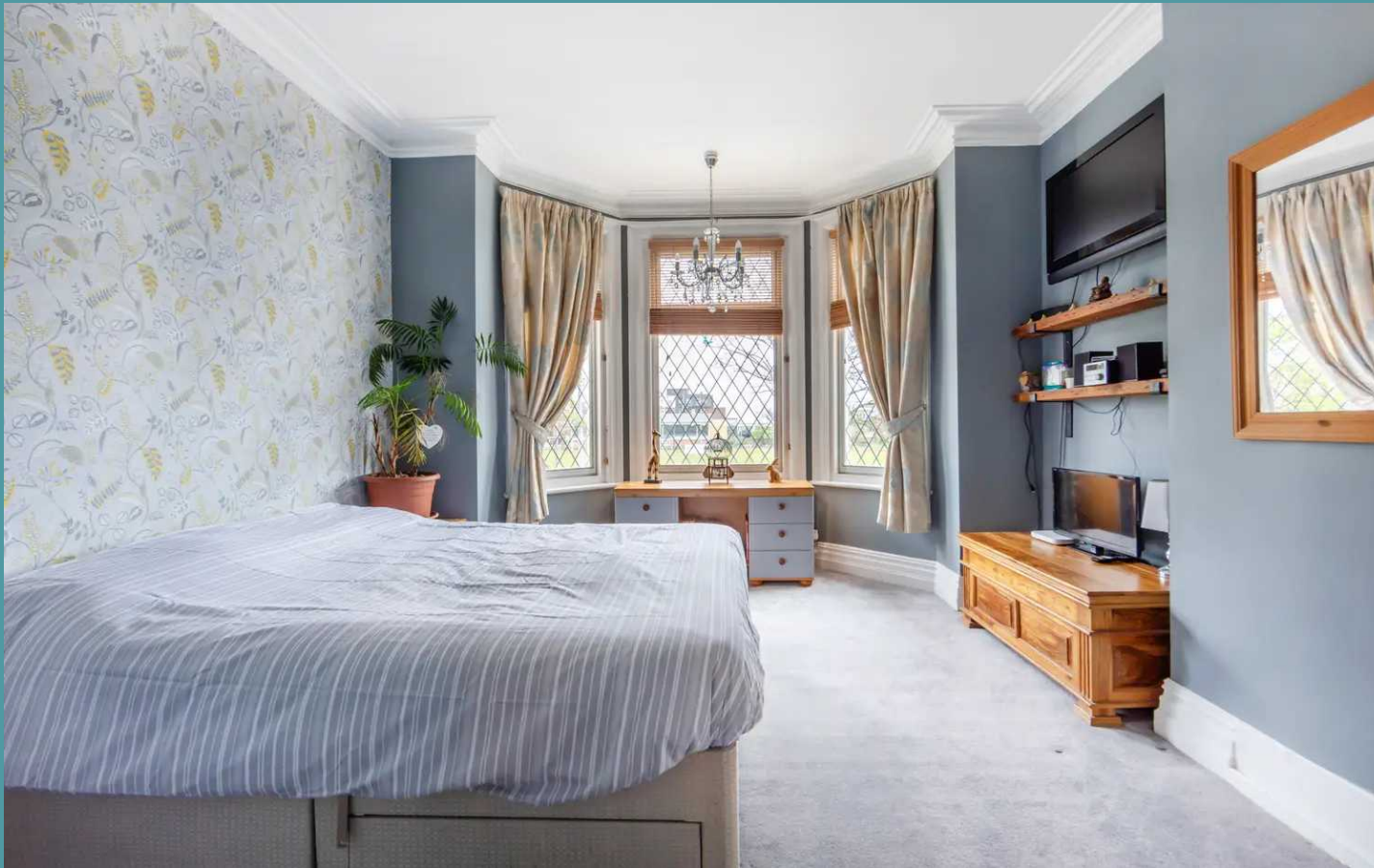


## 54 Wellesley Road

Great Yarmouth

Step inside where you are greeted by a welcoming entrance hall, leading you from the outside world into the sanctum of the home. Positioned at the front of the property are two reception rooms ensuring ample space for you to showcase your most comfortable furniture and dining set-up, encouraging gatherings with loved ones. The presence of large windows draws in an abundance of natural light, creating a bright and airy space. The kitchen is well-equipped with fitted units and appliances to enhance your cooking experience, transitioning into the dining room, encouraging gatherings with loved ones. Complemented by a convenient WC and a utility room, for your additional storage and laundry essentials.

Ascend the staircase to the upper levels, where you encounter nine bedrooms, seven of which flaunt ensuite bathrooms, designed to offer you relaxation and privacy. The master bedroom is complemented by a balcony, adding a luxury touch. The abundance of accommodation options lends versatility to the space. Whether you seek multiple guest bedrooms to host friends and family, ample storage for belongings, or a secluded study area for focused work from home, the possibilities are yours to explore.





## 54 Wellesley Road

Great Yarmouth

This property presents a rare opportunity to own a piece of architectural history while enjoying modern comforts and amenities. With its versatile layout, abundant natural light, and impeccable design, this home is a true gem in a sought-after location. Don't miss the chance to experience the beauty and luxury that this property has to offer.

Towards the rear is a low maintenance garden, providing a serene spot for al fresco dining or enjoying a morning coffee. It is fully enclosed so you can enjoy in seclusion. Four allocated parking spaces can be found at the rear of the property.

### AGENTS NOTES

We understand that this property is freehold. Connected to mains water, electricity, gas and drainage.

Heating system - Gas central heating

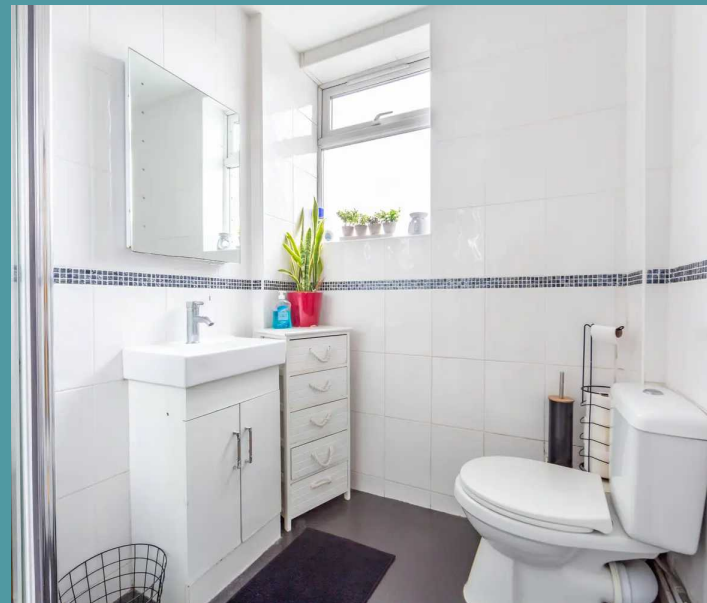
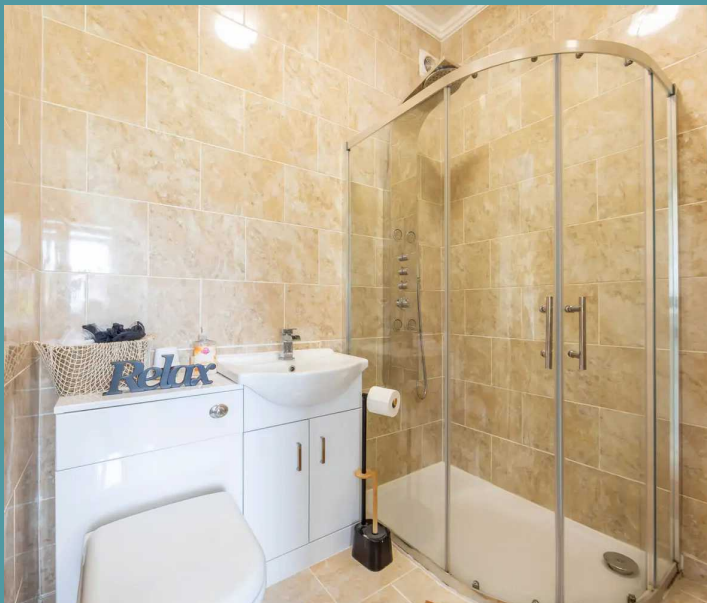
Council Tax Band: D



## 54 Wellesley Road

Great Yarmouth

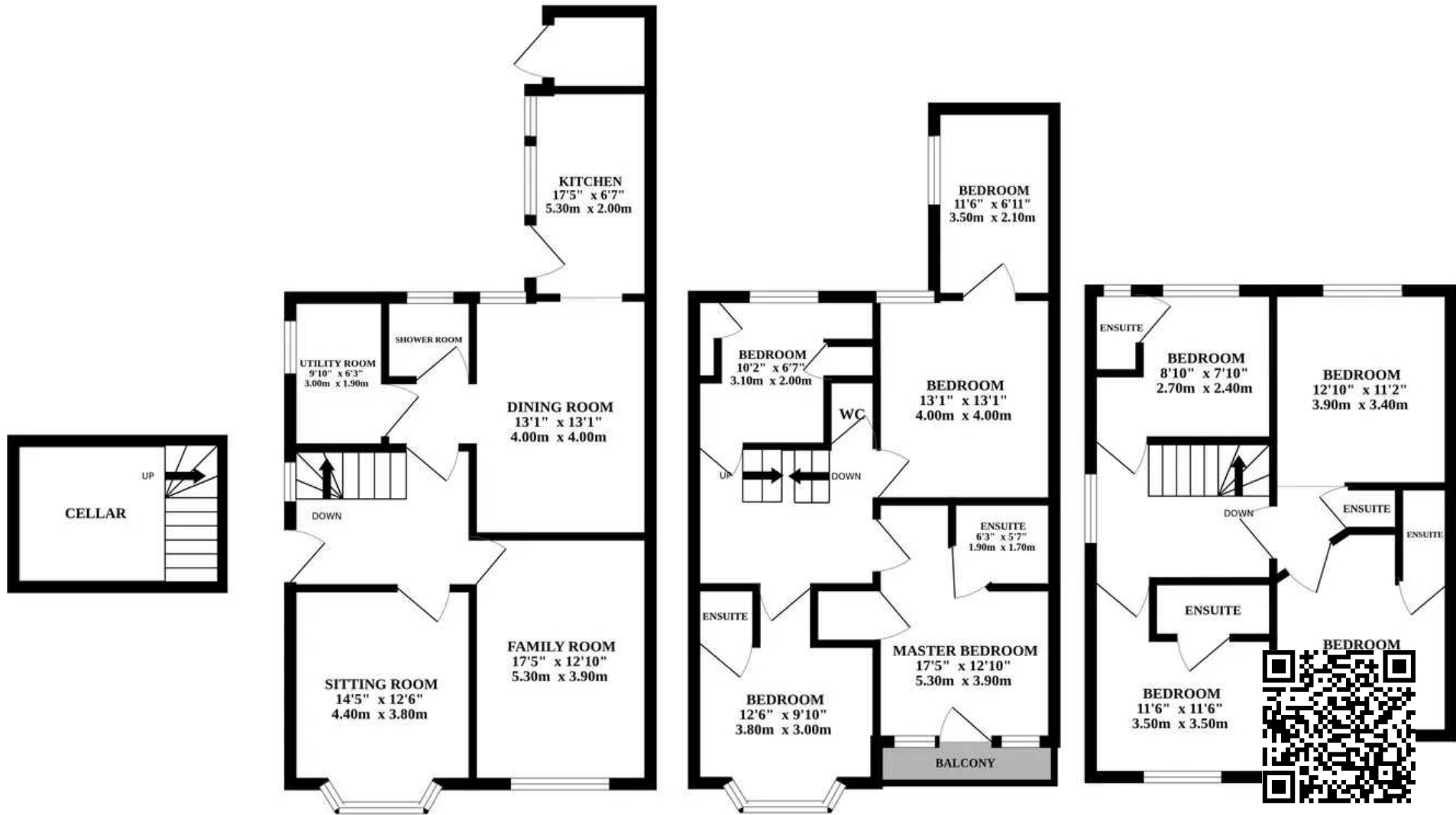
- THREE STOREY GUEST HOUSE
- PERFECT FAMILY HOME TO ACCOMMODATE A BUSY LIFESTYLE
- WALKING DISTANCE TO THE BEACH
- COMFORTABLE SITTING ROOM & FAMILY ROOM
- WELL-EQUIPPED KITCHEN & DINING ROOM
- GROUND FLOOR SHOWER ROOM & UTILITY
- NINE BEDROOMS - SEVEN PRIVATE ENSUITES
- LUXURY MASTER BEDROOM WITH BALCONY
- LOW MAINTENANCE GARDEN - FULLY ENCLOSED
- AMPLE AMOUNT OF OFF-ROAD PARKING



GROUND FLOOR

1ST FLOOR

2ND FLOOR



Whilst every attempt has been made to ensure the accuracy of the floorplan contained here, measurements of doors, windows, rooms and any other items are approximate and no responsibility is taken for any error, omission or mis-statement. This plan is for illustrative purposes only and should be used as such by any prospective purchaser. The services, systems and appliances shown have not been tested and no guarantee as to their operability or efficiency can be given.