



A THREE BEDROOM, TWO BATHROOM GROUND FLOOR APARTMENT

Frithwood Avenue, Northwood, Middlesex HA6 3LY

ROBSONS

A TWO BEDROOM, TWO BATHROOM GROUND FLOOR APARTMENT

Frithwood Avenue, Northwood, Middlesex HA6 3LY

**ENTRANCE HALL • RECEPTION ROOM
WITH DOORS TO PRIVATE PATIO AREA AND
COMMUNAL GROUNDS • KITCHEN/DINING
ROOM • MAIN BEDROOM WITH ENSUITE
SHOWER ROOM • TWO FURTHER BEDROOMS
• BATHROOM • ALLOCATED PARKING SPACE •
SHARED STORAGE •**

Description

A light and spacious three bedroom, two bathroom modern ground floor apartment in the rarely available Calver Lodge is offered to the market. The accommodation briefly comprises of an entrance porch and hallway, a spacious reception room with double doors leading to a private patio area and the communal grounds beyond. There is a modern fully fitted kitchen with granite worktops and a luxury family bathroom. There are three bedrooms, two with fitted wardrobes and an en suite to the master bedroom. Off the main hallway are two large storage areas including an airing cupboard. The property is set in private communal gardens, with one allocated parking space, two visitor spaces and shared storage.





Location

Northwood provides a range of shopping facilities, a Waitrose supermarket, restaurants and the Metropolitan Line Station providing access to Baker Street and the city beyond. The area has a range of both private and state schools. Places of worship and recreational facilities are also well catered for in the surrounding area and major motorway links to M25 and M1 are nearby.

Additional Information

Tenure: Leasehold

Lease: 113 years remaining

Ground Rent £450 pa

Service Charge: Circa £2,500 pa

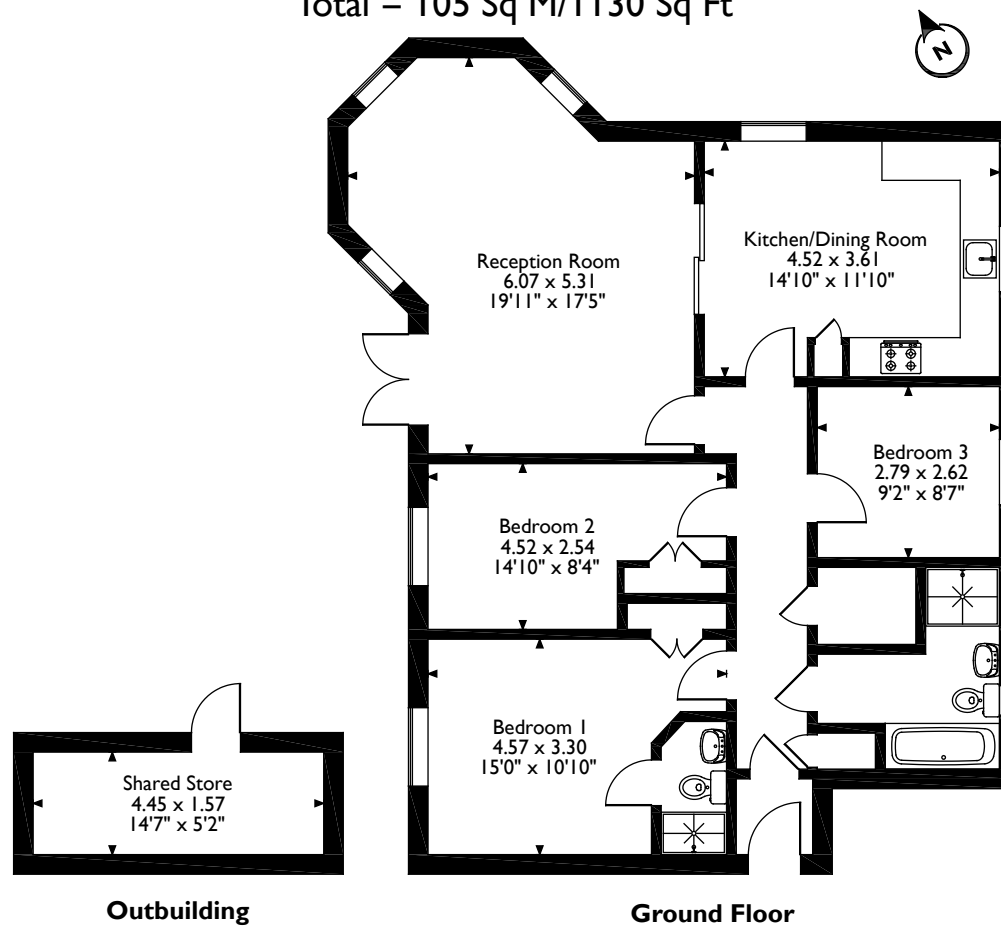
Council: London Borough of Hillingdon

Council Tax Band: F

Energy Efficiency Rating Band: C



25, Frithwood Avenue, Northwood
 Approximate Gross Internal Area
 Main House = 98 Sq M/1055 Sq Ft
 Outbuilding = 7 Sq M/75 Sq Ft
 Total = 105 Sq M/1130 Sq Ft



Please note that the location of doors, windows and other items are approximate and this floorplan is to be used for illustrative purposes only. Unauthorized reproduction is prohibited.

ROBSONS

7 Clive Parade, Northwood, Middlesex HA6 2QF
 Tel: 01923 835355 northwood1@robsonswb.com

www.robsonswb.com

www.the-londonoffice.co.uk
 40 ST JAMES'S PLACE SW1

Important notice: Robsons, their clients and any joint agents give notice that 1: They are not authorised to make or give any representations or warranties in relation to the property either here or elsewhere, either on their own behalf or on behalf of their client or otherwise. They assume no responsibility for any statement that may be made in these particulars. These particulars do not form part of any offer or contract and must not be relied upon as statements or representations of fact. 2: Any areas, measurements or distances are approximate. Plot sizes and dimensions are taken from Promap and are approximate. The text, photographs and plans are for guidance only and are not necessarily comprehensive. It should not be assumed that the property has all necessary planning, building regulation or other consents and Robsons have not tested any services, equipment or facilities. Purchasers must satisfy themselves by inspection or otherwise.