

Location:

Avenue Road is located within half a mile of Acton Town (District and Piccadilly line) and South Acton (overground) stations as well the shops and amenities of Churchfield Road.

Key points:

- Modern one bedroom apartment
- Sixth floor
- Private balcony
- 687 sq.ft / 63.9 sq.m
- Close to transport links
- Long lease
- Well-presented throughout
- No chain

Do Better:

Acton
sales@astonrowe.co.uk

57-59 Churchfield Road,
Acton, London, W3 6AY

020 8992 3600

Aston Rowe

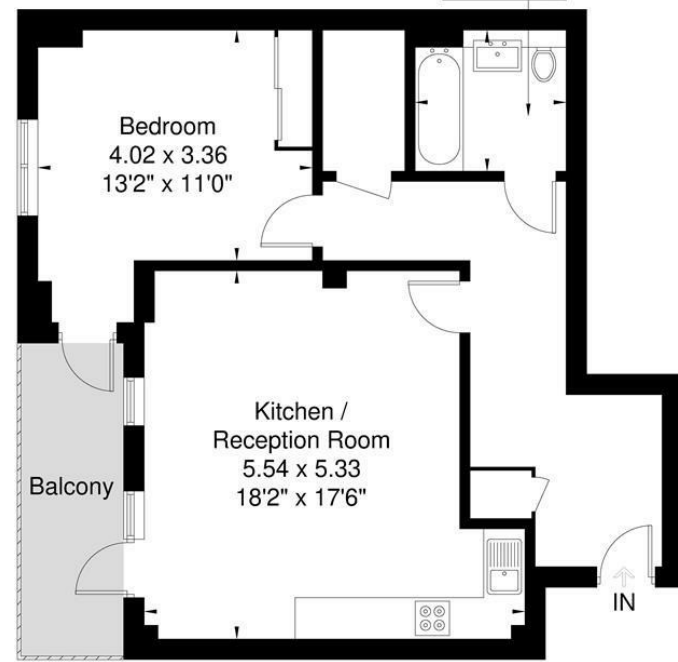


Wiltshire House

Approximate Gross Internal Area = 63.9 sq m / 687 sq ft



Bathroom
2.18 x 2.05
7'2" x 6'9"



Sixth Floor

Although every attempt has been made to ensure accuracy, all measurements are approximate. The floorplan is for illustrative purposes only and not to scale.
© www.perspective.co.uk

Energy Efficiency Rating		Current	Potential
Very energy efficient - lower running costs			
(92 plus) A		86	86
(81-91) B			
(69-80) C			
(55-68) D			
(39-54) E			
(21-38) F			
(1-20) G			
Not energy efficient - higher running costs			
England & Wales		EU Directive 2002/91/EC	

Environmental Impact (CO ₂) Rating		Current	Potential
Very environmentally friendly - lower CO ₂ emissions			
(92 plus) A			
(81-91) B			
(69-80) C			
(55-68) D			
(39-54) E			
(21-38) F			
(1-20) G			
Not environmentally friendly - higher CO ₂ emissions			
England & Wales		EU Directive 2002/91/EC	

£425,000

Avenue Road, London W3 8YS

- 1 Reception Rooms
- 1 Bedrooms
- 1 Bathrooms



The current owner says:

The property is in a fantastic location for the local shops, parks and transport links.

A bright and spacious one bedroom apartment in the popular Acton Gardens development on the borders of Chiswick. This immaculate sixth floor flat offers in excess of 687 sq.ft of accommodation, has a private balcony and a long lease.

Avenue Road is located within half a mile of Acton Town (District and Piccadilly line) and South Acton (overground) stations as well as being walking distance to Acton Mainline station (Elizabeth Line) and the shops and amenities of Churchfield Road.

What's better:

A large one bedroom apartment within the popular Acton Gardens development

