

# Fulham Road, SW6

Fulham, London

 LAWSONRUTTER





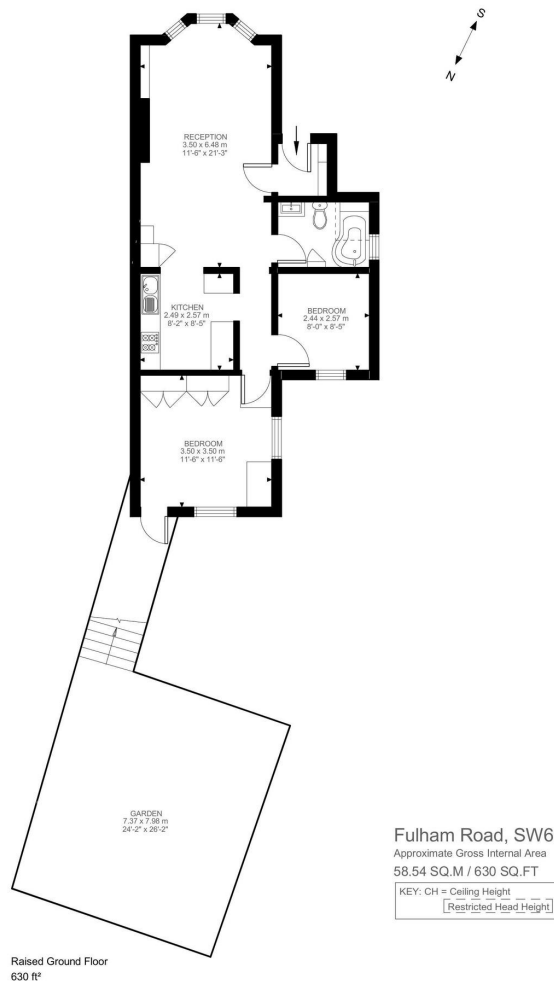
**Fulham Road**

London SW6

**£599,950**

**Share of Freehold**

A well presented two bedroom garden flat in this excellent location for the many shops bars and restaurants on the Fulham Road and within a short walk to Putney Bridge underground station (District Line). This light and airy property has a spacious reception dining room, a semi open kitchen, a principle bedroom with built in cupboards, a further bedroom, a bathroom and a fabulous private garden. The flat is also, a stone's throw to Bishops Park and the Thames Path and offered with a share off freehold too.



- \* WELL PRESENTED FLAT IN AN EXCELLENT LOCATION \*
- \* TWO BEDROOMS \* RECEPTION DINING ROOM \*
- \* KITCHEN \* BATHROOM \* GENEROUS PRIVATE GARDEN \*
- \* WALKING DISTANCE TO PUTNEY BRIDGE UNDERGROUND STATION (DISTRICT LINE) \*
- \* EXCELLENT SHOPS BARS & RESTAURANTS CLOSE BY \*
- \* SHARE OF FREEHOLD\*

All viewings by appointment through our **Fulham Office:**

**T: 020 7731 3636**  
**E: fulham@lawsonrutter.com**

347 Fulham Palace Road, London SW6 6TB

In accordance with the Property Misdescription Act 1991, we wish to emphasise that the information given in these particulars is intended to help you decide whether you wish to view this property. Whilst every care is taken to ensure the accuracy of these particulars please note that all measurements are approximate and we are, for the accuracy of other information, reliant on what the seller has provided. We strongly recommend that you rely on your own inspections and those of your advisors to establish the details of any aspects which are of particular importance. Please note that we have not undertaken any survey of the property or the appliances within it and the buyer must rely on their own



Illustration for identification purposes only. Not to scale. Floor Plan Drawn According To RICS Guidelines.