



## Paddock Cottage, Southburgh

Offers in Region of £925,000

# Paddock Cottage

Southburgh, Thetford

The epitome of opulent living on an impressive 3100 sq ft property set within 4.4 acres. This exceptional property boasts a high-specification kitchen, open-plan living areas, and flexible accommodation to suit diverse lifestyles. A master suite with dressing areas and ensuite offers ultimate luxury, while the existing stables cater to equestrian enthusiasts. The property offers a seamless indoor-outdoor flow with a large patio and benefits from ample off-road parking and electric charging facilities. Ideal for those seeking a prime and functional home.

Council Tax band: B

Tenure: Freehold





## Paddock Cottage

Southburgh, Thetford

The epitome of opulent living on an impressive 3100 sq ft property set within 4.4 acres. This exceptional property boasts a high-specification kitchen, open-plan living areas, and flexible accommodation to suit diverse lifestyles. A master suite with dressing areas and ensuite offers ultimate luxury, while the existing stables cater to equestrian enthusiasts. The property offers a seamless indoor-outdoor flow with a large patio and benefits from ample off-road parking and electric charging facilities. Ideal for those seeking a prime and functional home.

### THE LOCATION

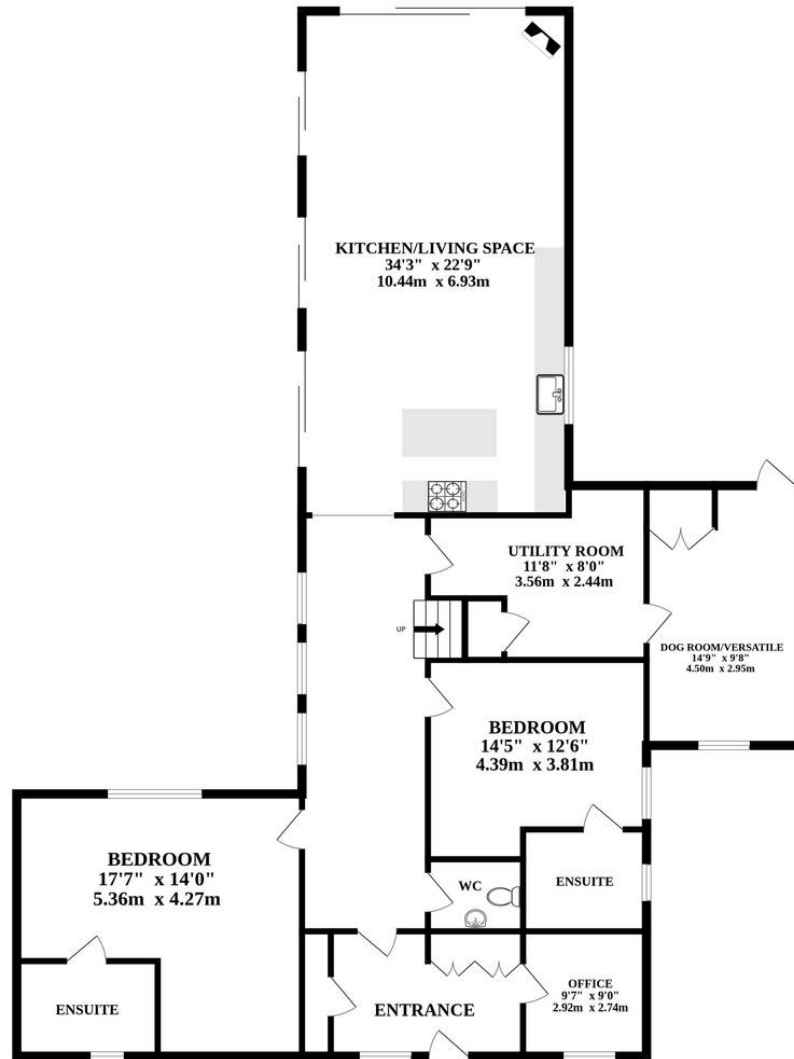
Located in the village of Southburgh, this property enjoys an ideal location offering a quintessential rural lifestyle. With nearby schooling options, this village becomes an ideal setting for families. Southburgh exudes tranquility, surrounded by neighbouring villages that collectively provide essential amenities, fostering a close-knit community. A local bus link enhances connectivity and the presence of a charming village church adds to the character of this location. Paddock Cottage is a perfect blend of peaceful village living with essential conveniences within reach.

### PADDOCK COTTAGE

Situated on an extensive 4.4-acre plot, setting a new standard for opulent living. Boasting over 3,100 square feet of high-spec living space meticulously designed to cater to the most discerning tastes. An abundance of built-in storage ensures every item has its place, enhancing the feeling of an



GROUND FLOOR



1ST FLOOR

