



14 Pearcefield, Norwich  
£140,000



# 14 Pearcefield

## Norwich

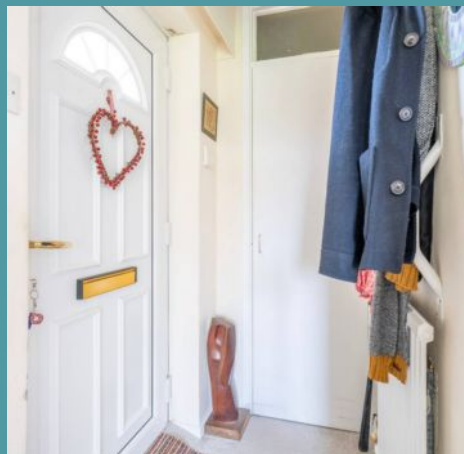
This ground floor apartment in Norwich is an excellent choice for those seeking a blend of affordability and accessibility. Offering a spacious and light-filled living environment, it is ideal for anyone looking for easy, single-storey living. With its vibrant kitchen, practical wet room, and two well-proportioned bedrooms, the apartment ensures comfort and functionality at every turn. Located centrally with access to communal grounds, it provides a relaxed and practical living experience in the heart of the city.

### The Location

Located in Norwich, is situated in a residential area known for its environment and community spirit. The road is conveniently positioned within proximity to a range of local amenities, including shops, schools, and parks, making it an ideal location for families and professionals alike.

Residents can enjoy easy access to the city centre, which is just a short distance away, offering a variety of shopping, dining, and cultural attractions. Pearcefield is well-served by public transport, with regular bus services connecting to various parts of the city.

Additionally, nearby green spaces, such as Mousehold Heath and the River Wensum, provide ample opportunities for outdoor recreation and leisure activities, enhancing the appeal of this desirable neighbourhood.







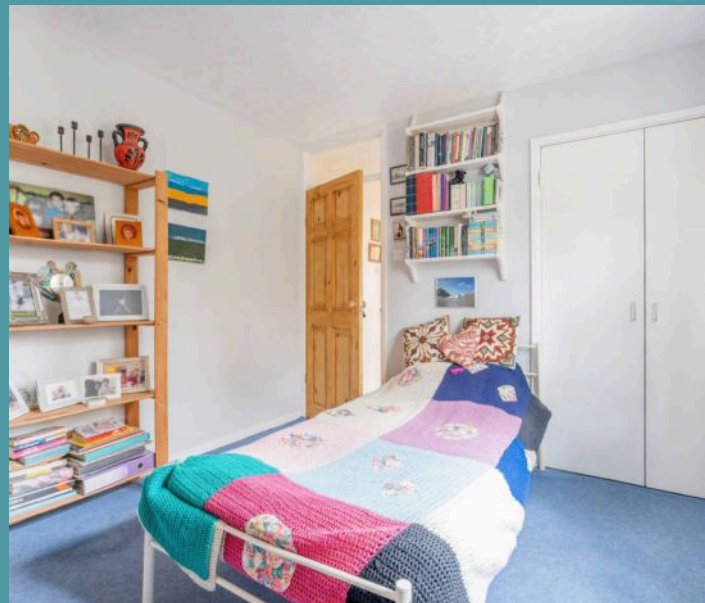
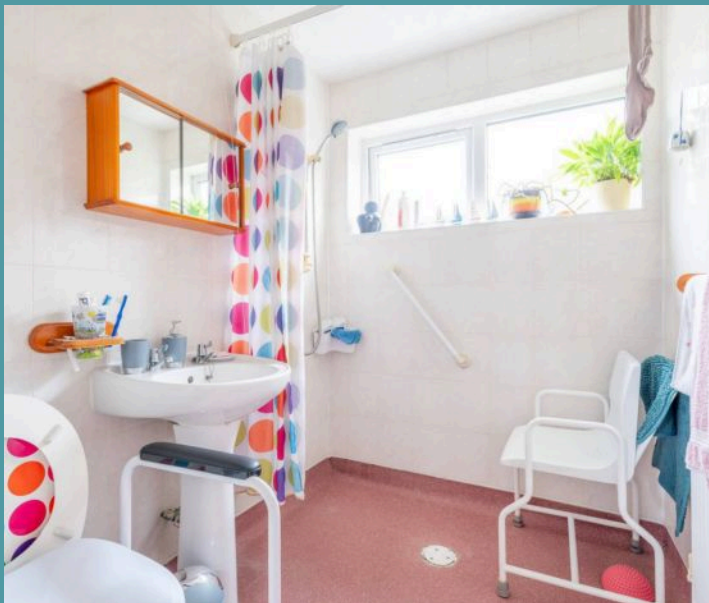
## 14 Pearcefield

Norwich

### Pearcefield

This ground floor apartment in Norwich offers a fantastic opportunity for those seeking affordable, single-storey living with easy accessibility. Perfectly suited for individuals or couples who value practicality, this apartment is designed to make everyday living effortless. Its central location ensures convenience, with all the amenities you need just a short distance away.

Upon entering, you're welcomed by a hallway, complete with built-in storage that adds functionality right from the start. The large, sitting room is light-filled, thanks to its double windows that flood the space with natural light. This generous room offers plenty of room for relaxation, making it an ideal spot to unwind after a busy day.







## 14 Pearcefield

Norwich

The kitchen, with its vibrant and colourful design, provides an inviting atmosphere for anyone who enjoys cooking. A small dining area is included, making this a perfect space for enjoying meals or entertaining guests. The layout is both stylish and practical, with everything you need within easy reach.

The apartment also features a well-designed wet room, offering easy access and convenience for all. Both bedrooms are thoughtfully sized, with built-in storage to keep your belongings neatly organised. The property is complemented by communal grounds, providing a welcoming outdoor space, while its central location makes it a highly desirable option for those looking for both comfort and practicality.

Agents Note

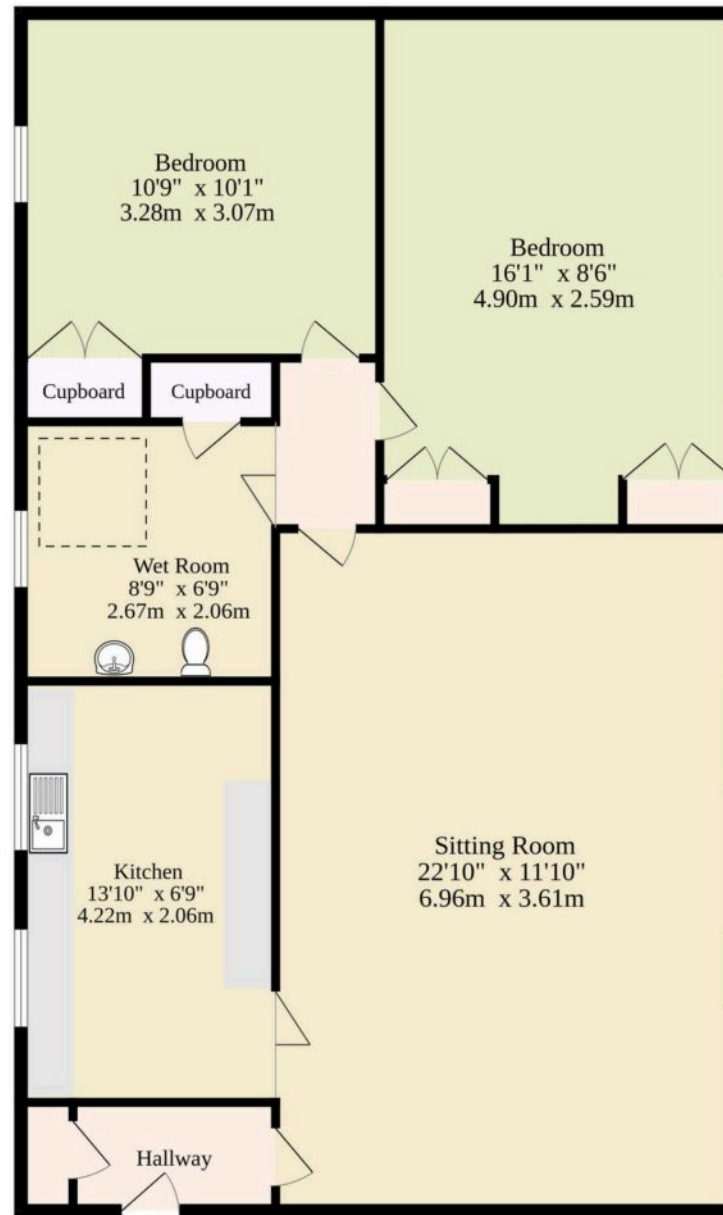
Sold Leasehold

Connected to all mains services.

Leasehold Details: TBC



Ground Floor  
741 sq.ft. (68.8 sq.m.) approx.



TOTAL FLOOR AREA : 741 sq.ft. (68.8 sq.m.) approx.

Whilst every attempt has been made to ensure the accuracy of the floorplan contained here, measurements of doors, windows, rooms and any other items are approximate and no responsibility is taken for any error, omission or mis-statement. This plan is for illustrative purposes only and should be used as such by any prospective purchaser. The services, systems and appliances shown have not been tested and no guarantee as to their operability or efficiency can be given.  
Made with Metropix ©2025