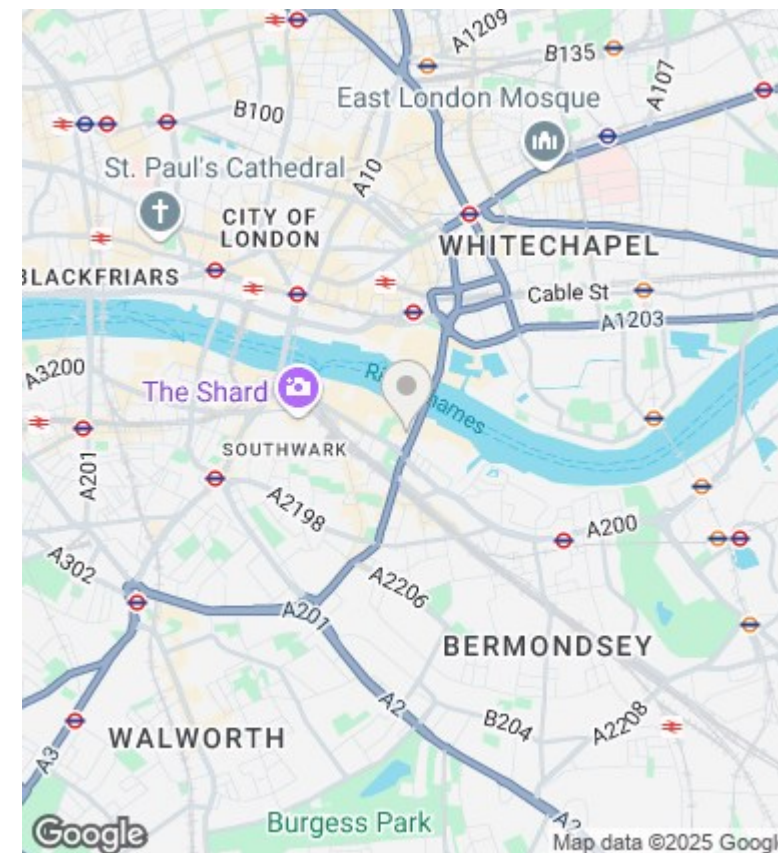
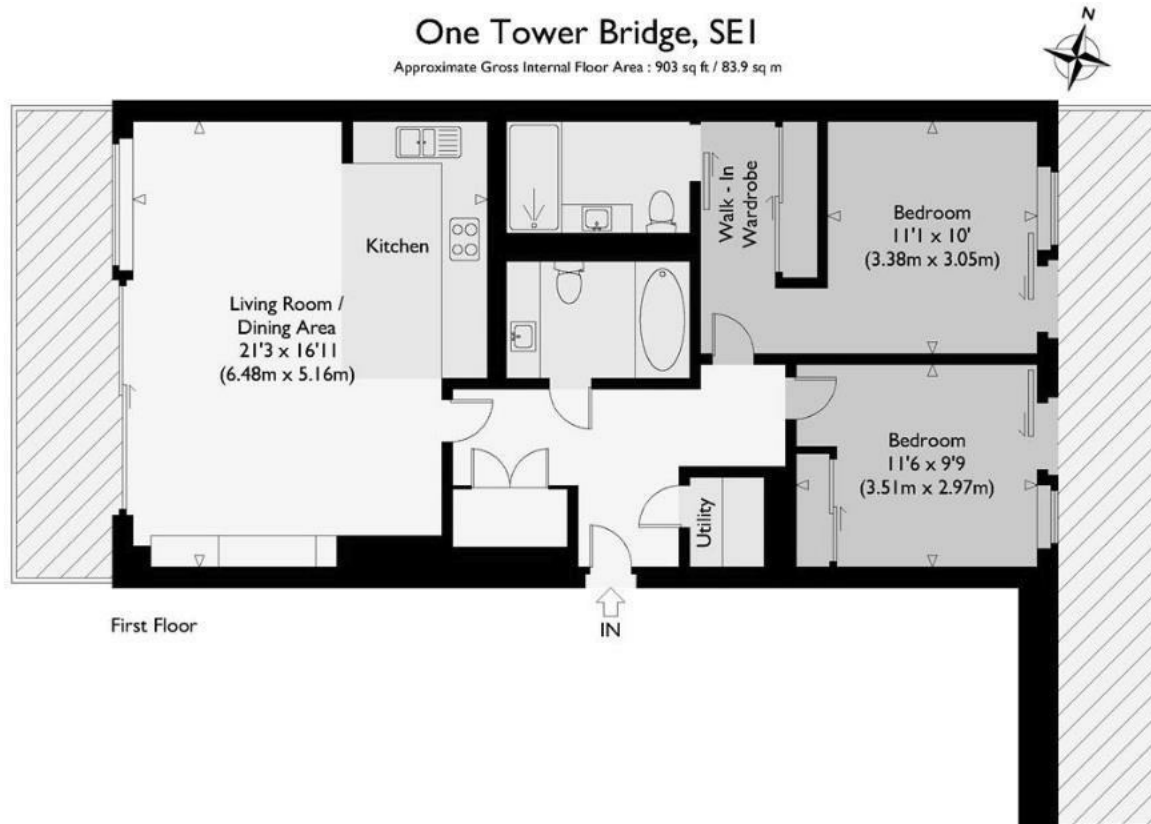




Tudor House, One Tower Bridge, Duchess Walk, London Bridge, London SE1 2SA

£1,250,000

- 24H CONCIERGE
- 2 PRIVATE TERRACES
- RESIDENCE GYM WITH SPA AND SWIMMING POOL
- WALKING DISTANCE TO LONDON BRIDGE STATION
- VIDEO VIEWING AVAILABLE
- DUAL ASPECT
- MEETING ROOMS
- 2 BEDROOMS 2 BATHROOMS
- UNDER FLOOR HEATING AND AIR COOLING
- ON SITE RESTAURANTS AND FOOD SHOP



Viewings

Viewings by arrangement only.
Call 02077225022 to make an appointment.

Council Tax Band

C

EPC Rating:

B

Energy Efficiency Rating		Current	Potential
<i>Very energy efficient - lower running costs</i>			
(92 plus)	A	86	
(81-91)	B		
(69-80)	C		
(55-68)	D		
(39-54)	E		
(21-38)	F		
(1-20)	G		
<i>Not energy efficient - higher running costs</i>			
England & Wales		EU Directive 2002/91/EC	