



Stile Hall Gardens, London, W4 3BT

£359,950

**WHITMAN & CO.**

SALES · LETTINGS · COMMERCIAL

- Sought after residential road
- Low outgoings
- Fantastic transport links
- Top floor flat
- CCTV and Ring doorbell
- No chain

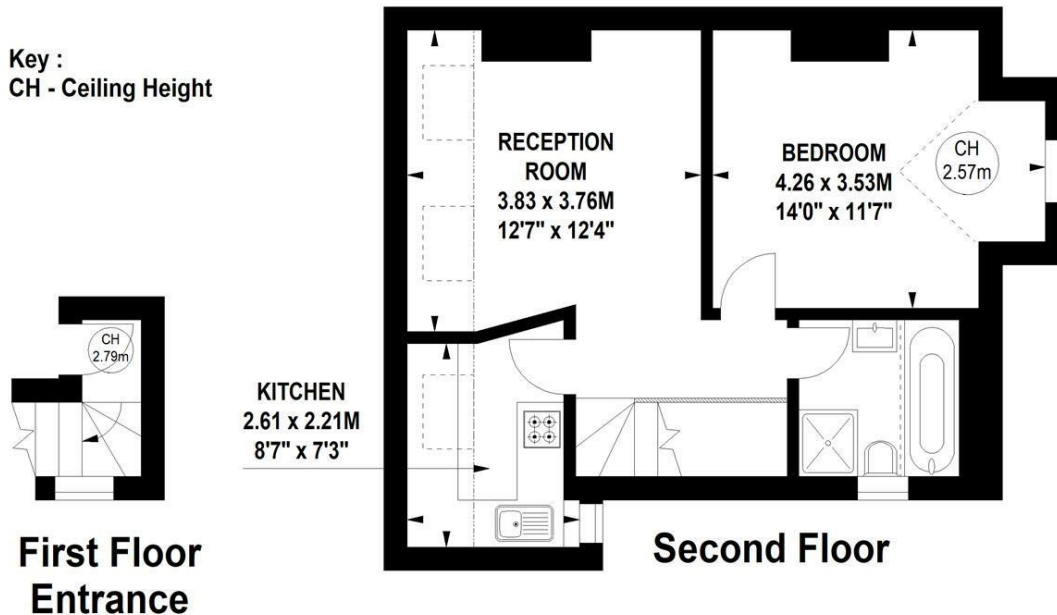
Tenure - Share of Freehold  
 Lease length - 104 years remaining  
 Ground Rent - Peppercorn  
 Service Charge - 1/3 of outgoings  
 Local authority - Hounslow  
 Council tax - Band D

## Stile Hall Gardens, W4

Approximate gross internal area  
 46.82 sq m / 504 sq ft



Key :  
 CH - Ceiling Height



Not to scale, for guidance only and must not be relied upon as a statement of fact.  
 All measurements and areas are approximate only

## THE PROPERTY

A bright and spacious top floor one bedroom period conversion flat ideally situated in this sought after tree-lined residential road offering close proximity to numerous amenities. Comprising a large double bedroom, luxury bathroom, 18' reception room, fully fitted kitchen, in good condition throughout as well as benefitting from low outgoings and share in the freehold. Located within close proximity of both Kew Bridge and Gunnersbury Stations, numerous bus routes, Strand on the Green and the extensive facilities of Chiswick High Road. No chain.

## SITUATION



5-7 Turnham Green Terrace, Chiswick, London, W4 1RG

Tel 020 8747 8800

E-mail [sales@whitmanandco.com](mailto:sales@whitmanandco.com)

Website [www.whitmanandco.com](http://www.whitmanandco.com)