



Symonds  
& Sampson

# Sunnydale Farm

Martinstown, Dorchester, Dorset

# Sunnydale Farm

Rew Lane, Martinstown  
Dorchester, Dorset, DT2 9HB

A detached chalet-style home set within 0.7 acres with countryside views, four double bedrooms, spacious living areas, modern kitchen, garden, extensive parking and triple garage on the outskirts of Martinstown.



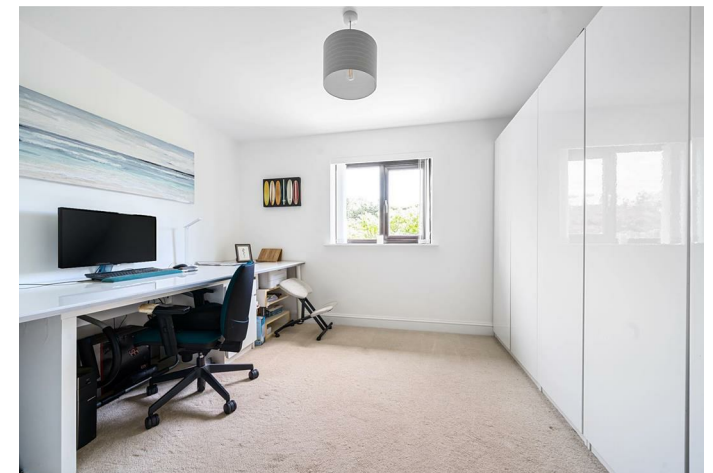
- Impressive individual detached chalet style house
- Delightful edge of village location with country views
- Two reception rooms, oak flooring and contemporary fitted kitchen
  - Four double bedrooms and three bathrooms
  - Detached triple garage and extensive parking
    - Large gardens (0.7 acres in total)
- Approx. Gross internal floor area 2536 sqft / 235.5 sqm (includes garage)

Guide Price £795,000

Freehold

Dorchester Sales  
01305 261008

dorchester@symondsandsampson.co.uk



## THE PROPERTY

This charming detached chalet-style house, located in an elevated position on the outskirts of Martinstown, has open countryside views. Built approximately 20 years ago, the property features brick and rendered elevations under a tiled roof and enjoys 0.7 acres of impressive grounds.

Upon entering, the ground floor opens into a delightful dining room with contemporary oak engineered flooring, with front-facing country views. The dining room leads to a spacious, triple-aspect sitting room with French doors that open to the rear garden. A feature Purbeck stone inglenook fireplace with a wood-burning stove, along with matching oak flooring, adds to the room's warm and inviting atmosphere.

The modern fitted kitchen has a range of wall and floor cabinets, oak countertops, an integrated dishwasher, a wine fridge and a range cooker. Adjacent is a practical utility room, which houses the oil-fired boiler and access to the rear garden.

Two double bedrooms are located on the ground floor. The main principle bedroom includes built-in wardrobes and an en-suite shower room. Additionally, there is a separate family bathroom.

Upstairs, a spacious landing currently serves as a study area, leading to two further large double bedrooms, one with a built-in wardrobe, both with far-reaching countryside views. A bathroom with a separate shower cubicle completes the first-floor accommodations.

## OUTSIDE

A five bar gate from the lane leads onto a large gravelled hardstanding for numerous cars and a detached triple garage with power connected. Steps lead up to a paved patio area with gravelled border and lawned gardens.

There is a separate driveway leading up to the house with additional extensive parking, lawned gardens, paved patio, greenhouse and a variety of shrubs and trees.





## SITUATION

Sunnydale Farm is situated in an elevated position towards the end of a track (Lower Rew Lane) to the western side of Martinstown. Within the village are a parish church, village hall, public house and village shop. Martinstown is about three miles south-west of the county town of Dorchester. Dorchester has an excellent range of facilities, the county hospital and two railway stations (to London Waterloo and Bristol Temple Meads).

Sporting and recreational facilities in the area include golf at Came Down (Dorchester) and East Dorset Golf Clubs; tennis and squash at Dorchester Tennis & Squash Club; sailing and water sports along the nearby coastline; riding and walking along the network of bridle and footpaths which cross the surrounding countryside.

## DIRECTIONS

What3words///wrist.absorbing.abruptly

## SERVICES

Mains water and electricity are connected.  
Private drainage. Septic tank, last emptied 14/5/24.  
Oil fired central heating.

Broadband - Standard speed available  
Mobile - It is reported that you are likely to have network coverage for both indoors and outdoors (<https://www.ofcom.org.uk>)

Council Tax Band:  
F (Dorset Council - 01305 251010)



# Rew, Martinstown, Dorchester

Approximate Area = 1944 sq ft / 180.6 sq m

Garage = 592 sq ft / 55 sq m

Total = 2536 sq ft / 235.5 sq m

For identification only - Not to scale

Energy Efficiency Rating		Current	Potential
Very energy efficient - lower running costs			
(92 plus) A			
(81-91) B			
(69-80) C		72	80
(55-68) D			
(39-54) E			
(21-38) F			
(1-20) G			
Not energy efficient - higher running costs			
England & Wales		EU Directive 2002/91/EC	



Floor plan produced in accordance with RICS Property Measurement Standards incorporating International Property Measurement Standards (IPMS2 Residential). © nitchecom 2024. Produced for Symonds & Sampson. REF: 1190364



Dorchester/ATR/06.11.2024 rev



naei | propertymark  
PROTECTED

www.  
the  
londonoffice.co.uk  
40 ST JAMES'S PLACE SW1

01305 261008

dorchester@symondsandsampson.co.uk  
Symonds & Sampson LLP  
Symonds & Sampson, 9 Weymouth Avenue,  
Dorchester, Dorset DT1 1QR



Important Notice: Symonds & Sampson LLP and their Clients give notice that: 1. They have no authority to make or give any representations or warranties in relation to the property. These particulars do not form part of any offer or contract and must not be relied upon as statements or representations of fact. 2. Any areas, measurements or distances are approximate. The text, photographs and plans are for guidance only and are not necessarily comprehensive. It should not be assumed that the properties have all necessary planning, building regulation or other consents and Symonds and Sampson LLP have not tested any services, equipment of facilities. 3. We have not made any investigation into the existence or otherwise of any issues concerning pollution of the land, air or water contamination and the purchaser is responsible for making his/her own enquiries in this regard. 4. The property is sold subject to and with the benefit of all existing wayleaves, easements and rights of way whether public or private, specifically mentioned or not. The vendors shall not be required to define any such rights, privileges or advantages.

SALES | LETTINGS | AUCTIONS | FARMS & LAND | COMMERCIAL | NEW HOMES | PLANNING & DEVELOPMENT