

**Kingsbridge Road  
Morden, SM4 4QA**

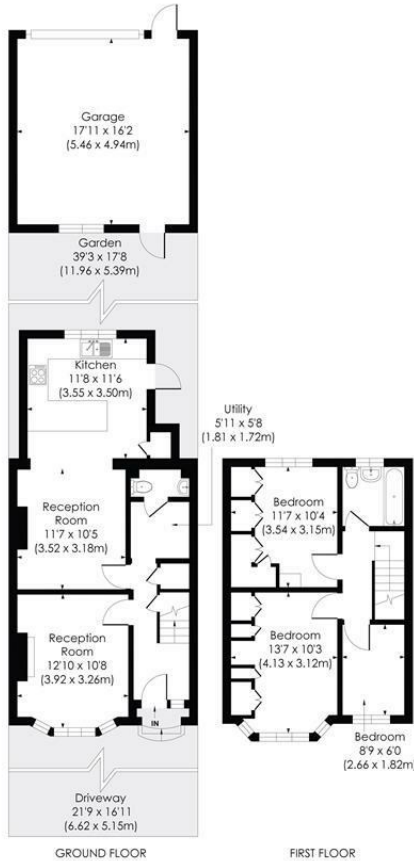
**£600,000 Freehold**



**A beautiful three bedroom extended 'Crouch built' house with a wonderful garden, large garage and off street parking. Boasting a lovely bright kitchen/dining room, separate reception, and a utility room/downstairs W.C. Located in a sought after residential road in Lower Morden with great potential to extend further subject to planning permission. Viewings are highly recommended.**

**KINGSBRIDGE ROAD, SM4**

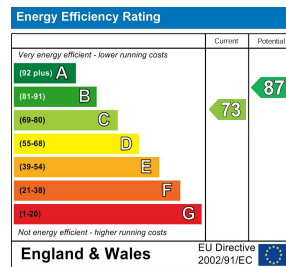
Approx. Gross Internal Floor Area  
**1070 Sq. ft/99.45 Sq. m (Incl. Garage)**  
**937 Sq. ft/87.02 Sq. m (Excl. Garage)**



This floor plan has been prepared for the purpose of illustration only in accordance with the latest RICS code of measuring practice and is not to scale. All measurements and areas are approximate and whilst every effort has been made to ensure the accuracy of the plan contained here, no responsibility is taken for any error, omission or misstatement.

© Pixangle Property Marketing Ltd. info@pixangle.com Tel: 0208 870 2118

- Terraced Crouch Built Family House
- Three Bedrooms
- Off Street Parking
- Downstairs Utility room and W/C
- Lovely Private Garden
- Close to Good Schools and Recreation Grounds
- Garage
- Freehold
- EPC Rating - C
- Merton Council Tax Band - E



**For Free Mortgage Quote and Best Mortgage Rates, call Ellisons Mortgage Advisor on 0208 543 1166**



Although these particulars are believed to be correct, their accuracy is not guaranteed and they do not form part of any contract.

**Celebrating 30 years of successful Sales and Lettings in Merton**

