

# CAVENDER

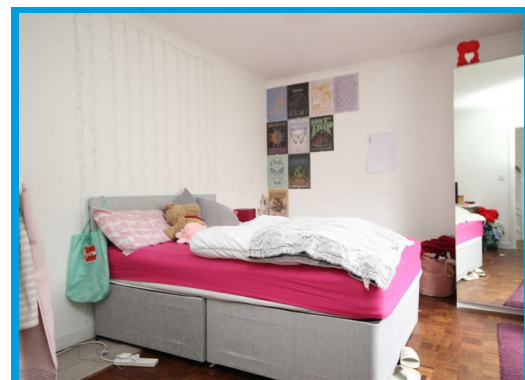
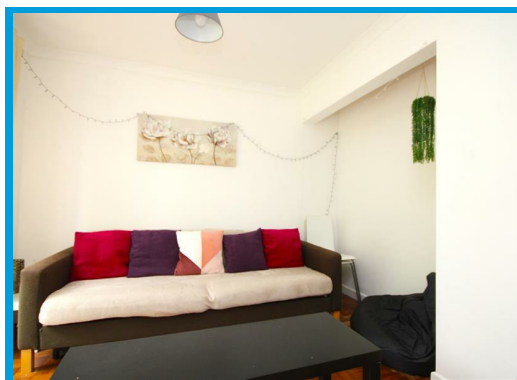
ESTATE AGENT



Blackwell Avenue, Guildford, Surrey GU2 8LU

£2,650 PCM

**\*\*STUDENT ACCOMODATION\*\*** A newly refurbished four bedroom house, with two bathrooms and off street parking for two cars. Walking distance to Surrey University.



# Description

This recently refurbished four bedroom semi detached house is located close to Surrey University, Surrey Research Park and with easy A3 access.

The property comprises hallway leading to bedroom four, modern open plan living/ modern kitchen with appliances and doors leading to the private enclosed garden.

The first floor offers two double bedrooms, a further bedroom and bathroom suite with shower over bath. The property also benefits from off street parking.

