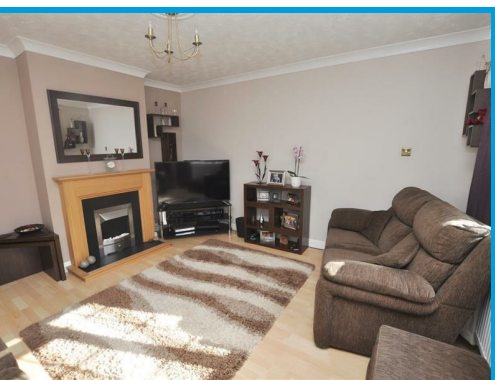




Hornbeam Road, Guildford Surrey, GU1 1LR

£3,400 PCM

****STUDENT ACCOMODATION**** Located in a popular residential location, this FIVE bedroom student house, suitable for five or six students, offers spacious and well presented accommodation throughout within easy access to Guildford town centre, Surrey University and the A3.



Description

A beautifully presented and spacious FIVE bedroom student property located within easy access to Surrey University, Guildford town centre and A3 access.

The property comprises an entrance hall leading to a large kitchen/ diner, a large lounge and a utility room.

On the first floor, the property boasts three double bedrooms, two further good size bedrooms and two bathrooms.

The property further features a lawned garden with patio and driveway parking. IDEAL FOR STUDENTS AND SHARERS

