



1 Letton Close, Shipdham
£290,000

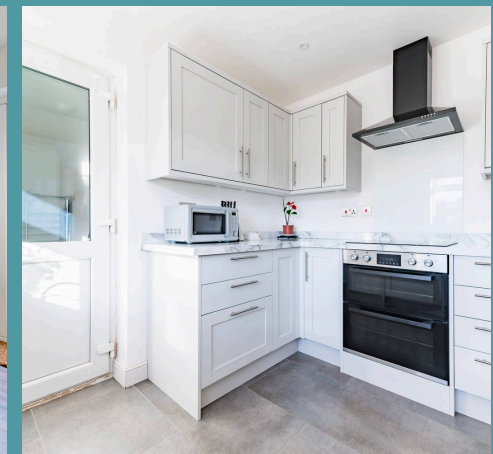
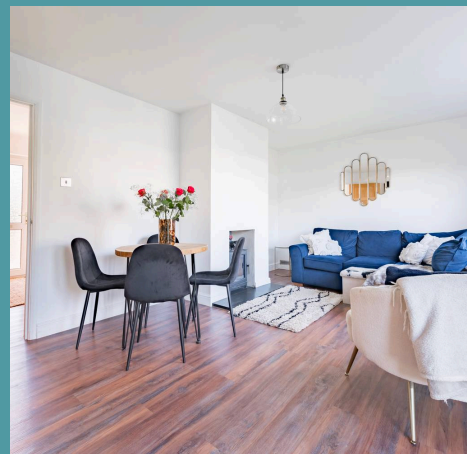
1 Letton Close

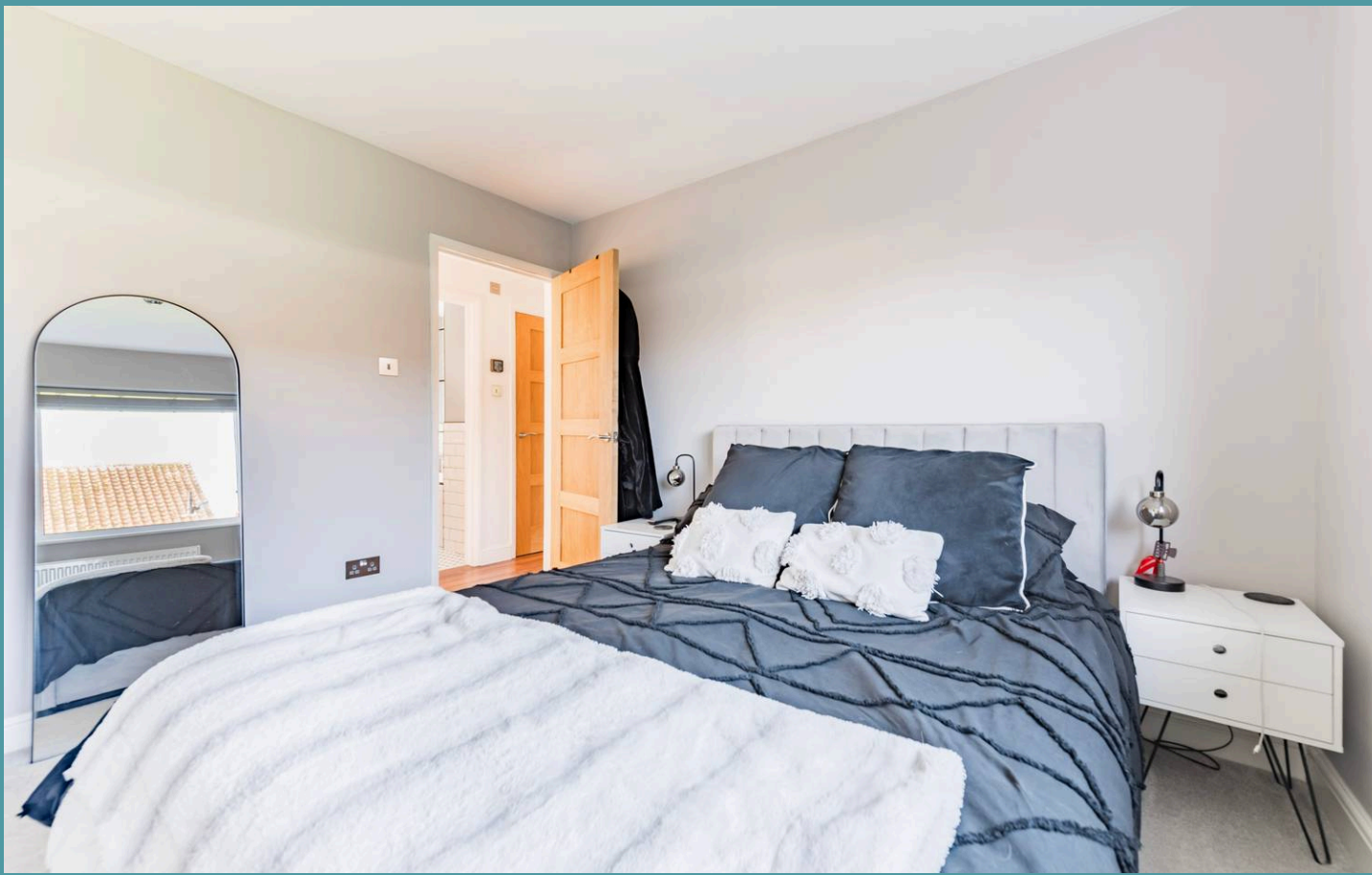
Shipdham, Thetford

This fully renovated two-bedroom detached bungalow blends contemporary design with thoughtful upgrades. Highlights include an airy lounge-diner with a log burner and a sleek kitchen with integrated appliances, creating a welcoming space for entertaining. Both generously sized double bedrooms offer comfort, with the master featuring built-in wardrobes. The stylish family bathroom boasts a luxurious P-shaped bath and stunning tiling. Outside, the enclosed rear garden is ideal for relaxation and hosting, with a well-kept lawn, mature shrubs, and a patio. The new roof, recently installed boiler, and oak doors enhance the home's functionality while maintaining its stylish appeal.

The Location

Nestled in Shipdham, this property's location provides easy access to neighbouring towns like Dereham and Watton, boasting vital amenities for daily convenience. Commuters will appreciate the swift access to the A47, facilitating seamless journeys to nearby cities and towns. Families with children will find this area particularly enticing as it falls within the catchment area for highly regarded schools.





1 Letton Close

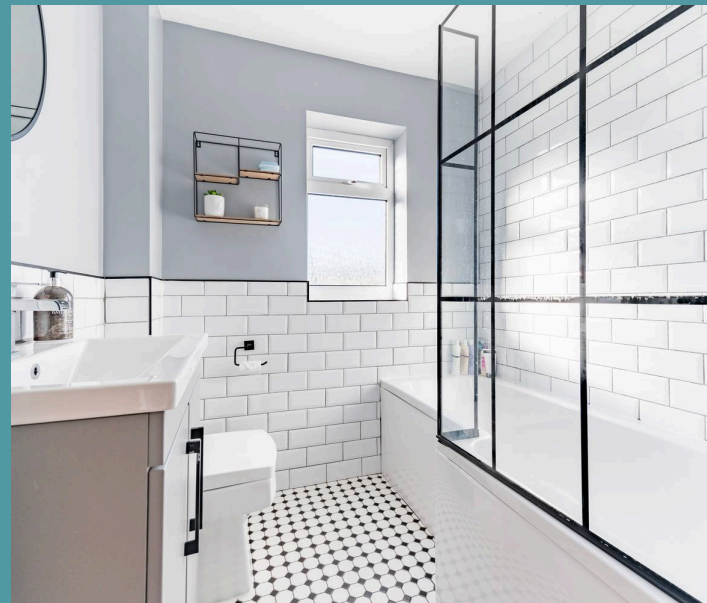
Shipdham, Thetford

Letton Close

Elegantly renovated, this two-bedroom detached bungalow exudes modern style and premium finishes. The bright and airy lounge-diner, enhanced by a stylish log burner, provides a versatile space for both unwinding and hosting guests.

The contemporary kitchen features integrated appliances, sleek finishes and a separate utility room for added practicality. Both double bedrooms are generously sized, with the master benefitting from built-in wardrobes, while the stunning family bathroom boasts a luxurious P-shaped bath with a shower overhead, complemented by stylish tiling.

Outside, the property offers a well-manicured rear garden, fully enclosed for privacy and thoughtfully designed for both relaxation and entertaining.





1 Letton Close

Shipdham, Thetford

A neatly maintained lawn is complemented by mature shrubs and a patio area, perfect for dining or enjoying peaceful evenings. The front of the property includes a shingle area for easy maintenance, along with a generous driveway leading to a single garage with power and lighting.

Practical upgrades such as a new roof, a recently installed boiler and modern oak doors elevate the home's appeal and functionality. Whether you're seeking style, comfort, or convenience, this stunning bungalow offers it all in one beautifully renovated package.

Agents Note

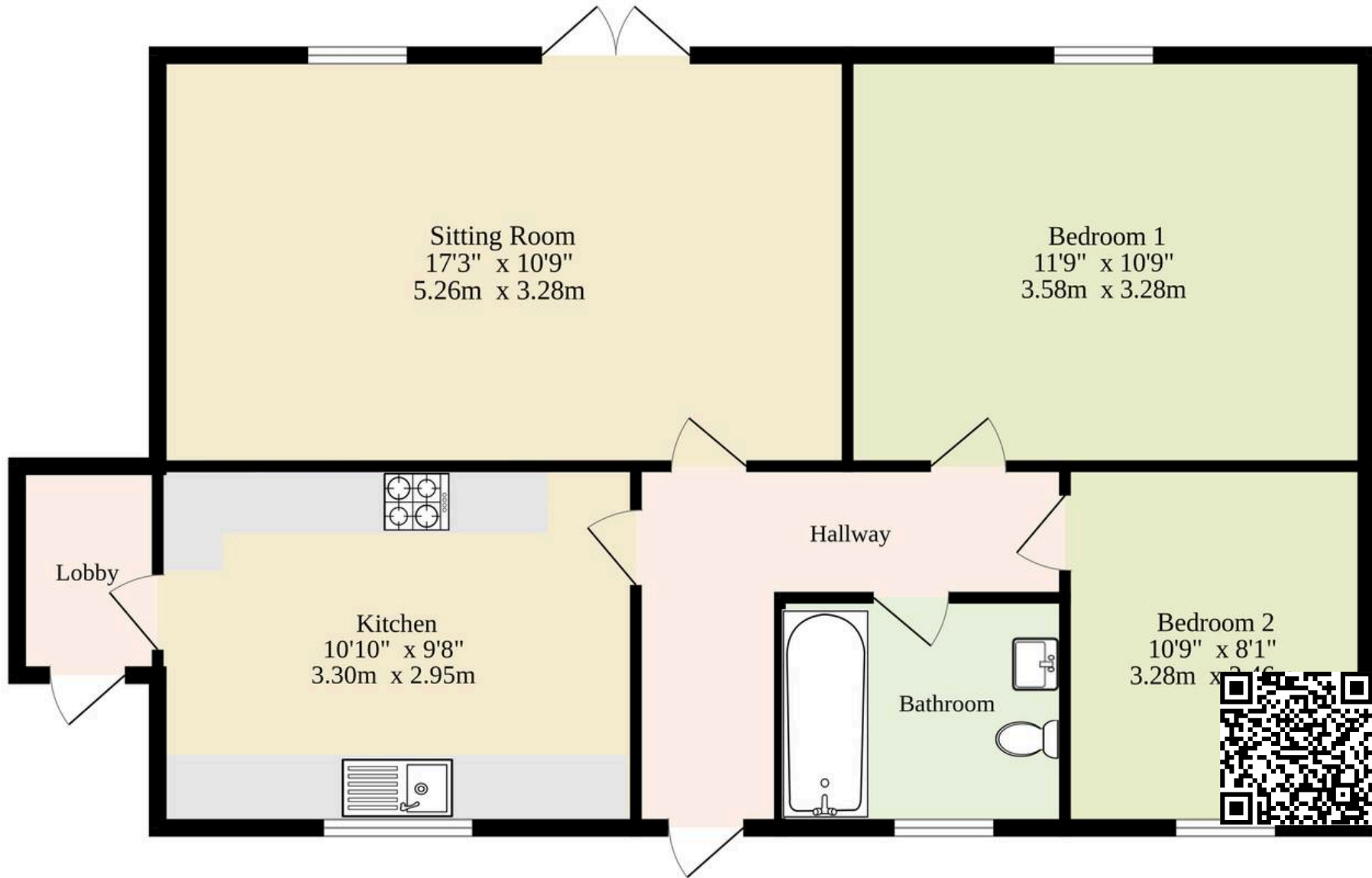
Sold Freehold

Connected to all mains services

- Fully renovated two-bedroom detached bungalow
- Spacious lounge-diner with a log burner
- Modern kitchen with integrated appliances and separate utility space
- Large double bedrooms, master with built-in wardrobes
- Stylish family bathroom with a P-shaped bath and overhead shower
- Private, fully enclosed rear garden ideal for relaxation and hosting
- Well-maintained lawn, mature shrubs, and patio area for outdoor enjoyment
- Single garage with power and lighting
- Practical upgrades including a new roof, recently installed boiler, and oak doors



Ground Floor



Whilst every attempt has been made to ensure the accuracy of the floorplan contained here, measurements of doors, windows, rooms and any other items are approximate and no responsibility is taken for any error, omission or mis-statement. This plan is for illustrative purposes only and should be used as such by any prospective purchaser. The services, systems and appliances shown have not been tested and no guarantee as to their operability or efficiency can be given.
Made with Metropix ©2025