



Studio

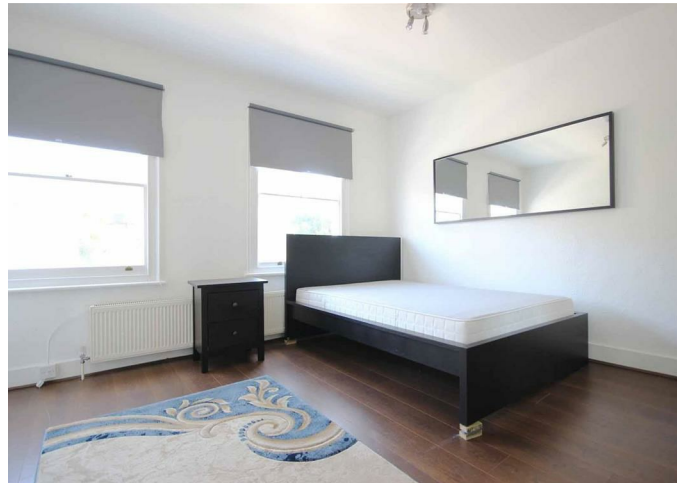
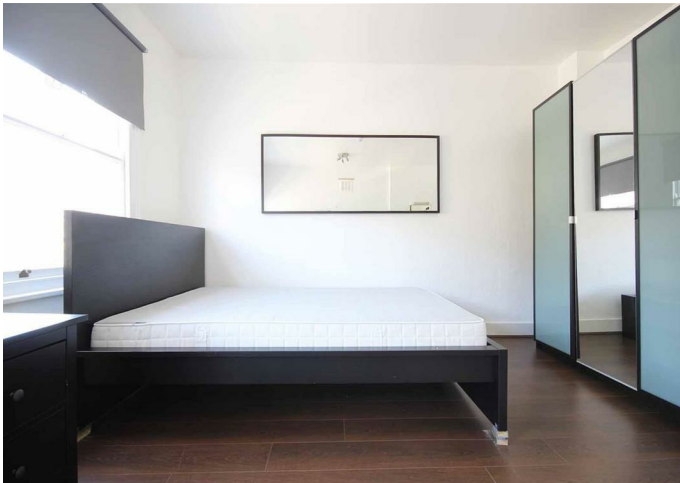
**56-58, CROWDALE
ROAD, NW1 1TP**

Per Calendar
£1,750

Available: 20th January 2025

FEATURES

- Large Studio
- Tiled Bathroom
- Moments from Mornington Tube
- Perfect for Professional or Students
- Separate Kitchen
- Furnished
- Fantastic Local Amenities
- £100 For Utilities



Huddletons

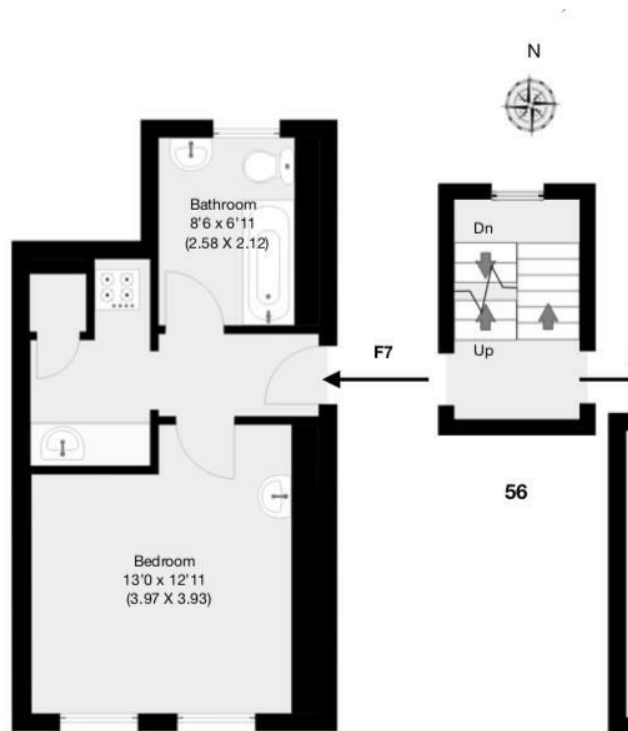
null Bedroom Studio located in London

Huddletons are pleased to offer this fantastic studio apartment set in a period building moments from Mornington Crescent Underground Station (Northern Line) and King's Cross International

£100 per month for gas, electric and water.

The property is set on the second floor of a well maintained period building and benefits from a large bedroom/lounge, a separate kitchen and a shower room together with use of a communal garden.

Perfect for a single professional, couple or a student.



Approximate Gross Internal Area
31 sqm / 334 sqft

SECOND FLOOR

Call us on

0207 205 4411

info@huddletons.com

<http://www.huddletons.com>

Council Tax Band

Energy Efficiency Rating		
	Current	Potential
<i>Very energy efficient - lower running costs</i>		
(92 plus) A		
(81-91) B		
(69-80) C		
(55-68) D		
(39-54) E		
(21-38) F		
(1-20) G		
<i>Not energy efficient - higher running costs</i>		
England & Wales	EU Directive 2002/91/EC	

Agents Note: Whilst every care has been taken to prepare these particulars, they are for guidance purposes only. All measurements are approximate and are for general guidance purposes only and whilst every care has been taken to ensure their accuracy, they should not be relied upon and potential buyers are advised to recheck the measurements.

Huddletons