



Spring Grove, London, W4 3NH

Guide Price £899,950

WHITMAN & CO.

SALES · LETTINGS · COMMERCIAL

- Private 38' south facing garden
- Beautifully presented
- Fantastic transport links
- Sunny roof terrace
- Close to the river
- No chain

Tenure - Freehold
 Local Authority - Hounslow
 Council Tax - Band F

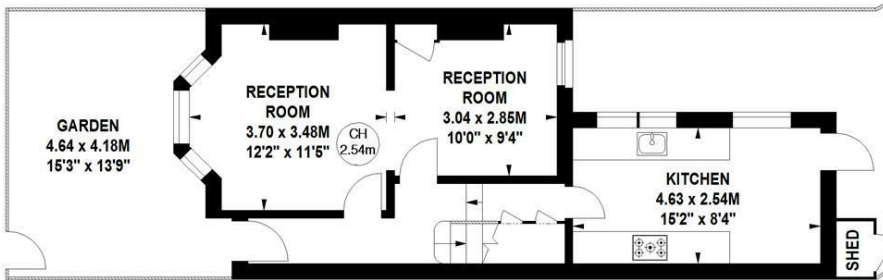
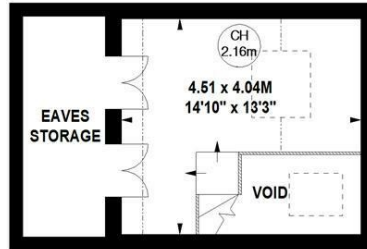
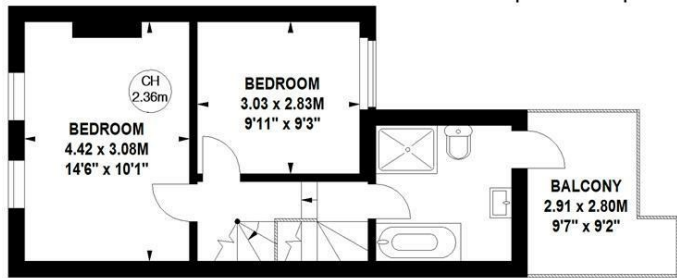
THE PROPERTY

A well-presented Victorian cottage, ideally located in the historic Strand on the Green, featuring a private 38-ft south-facing garden and a roof terrace. The property includes two double bedrooms, a staircase leading to a loft room, a luxury bathroom, a double reception room, and a fully integrated kitchen, all complemented by a host of original features. Situated on a sought-after residential street, it offers close proximity to Kew Bridge Station, local bus routes, Gunnersbury Station, and an array of local shops, bars, and restaurants. No chain.

Spring Grove, W4

Approximate gross internal area
 102.93 sq m / 1108 sq ft
 (Including Eaves Storage & Void)
 Approximate eaves storage area
 6.41 sq m / 69 sq ft

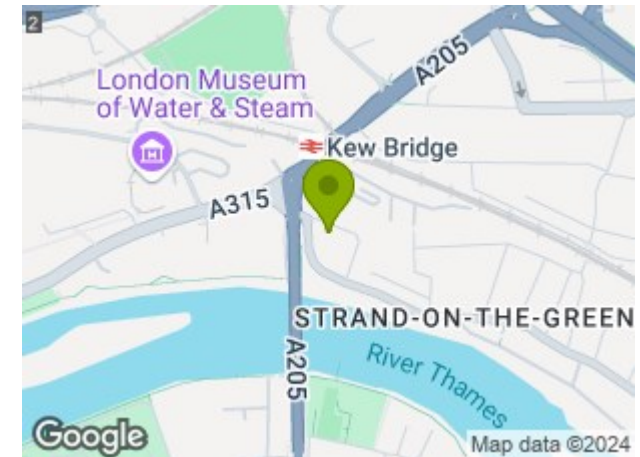
Key :
 CH - Ceiling Height



GARDEN
 11.45 x 3.44M
 37'7" x 11'3"

Not to scale, for guidance only and must not be relied upon as a statement of fact.
 All measurements and areas are approximate only

SITUATION



5-7 Turnham Green Terrace, Chiswick, London, W4 1RG

Tel 020 8747 8800

E-mail sales@whitmanandco.com

Website www.whitmanandco.com