



1 Diana Way, Caister-On-Sea

Guide Price £300,000 - £325,000

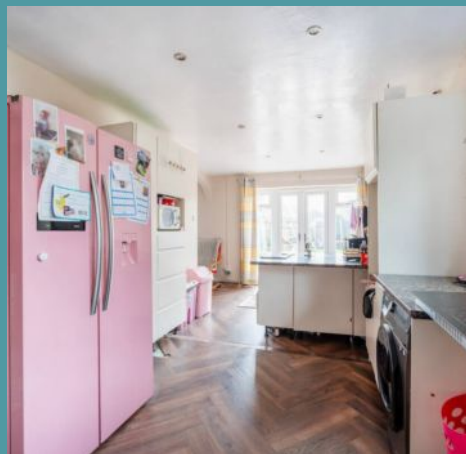
1 Diana Way

Caister-On-Sea, Great Yarmouth

Guide price £300,000-£325,000 Suitable for individuals looking for a family home, to downsize from a house, or if you require a single-floor layout, in the coastal village of Caister-On-Sea. This detached bungalow offers a comfortable and convenient lifestyle, highlighting an open-plan kitchen/dining room, spacious sitting room, three bedrooms and a bathroom. Externally, you will find a large garden, a driveway providing off-road parking and a garage for storage options. Don't miss the opportunity to acquire this home and experience all it has to offer.

Location

Caister-on-Sea is a coastal village located in the county of Norfolk, situated on the North Sea coast. It lies approximately 3 miles north of Great Yarmouth, making it part of the Greater Yarmouth area. Caister-on-Sea is also historically significant, with its origins dating back to Roman times, as evidenced by the nearby Caister Roman fort. The area is well-served by local amenities, including shops, cafes, and schools such as Caister Academy, with regular bus links to surrounding areas. The village is well-connected by road and is close to the A149, making it easily accessible.





1 Diana Way

Caister-On-Sea, Great Yarmouth

Upon entering, a welcoming entrance hall sets the tone for the rest of the home. This space is thoughtfully complemented by a convenient WC. Moving through to the comfortable sitting room, residents are greeted with a space that effortlessly balances relaxation and entertaining, making it the perfect setting for unwinding in the evenings or gathering with loved ones.

The heart of the home lies in the spacious kitchen/dining room, fitted with units, appliances, and an abundance of storage space. This area offers a seamless transition between cooking, dining, and socialising, making it the perfect spot for everyday family living.

Accommodation consists of three bedrooms, each thoughtfully designed to offer relaxation and privacy. The third bedroom has the versatility to be a home office, dressing room or guest room, depending on your own requirements. Completing the accommodation is a bathroom, comprising of a three piece suite, including a bathtub with shower attachment, hand basin and a WC.





1 Diana Way

Caister-On-Sea, Great Yarmouth

Towards the rear is a large garden, that is primarily laid to lawn, with plenty of space for your timber shed, summerhouse or greenhouse. A driveway that provides off-road parking for multiple vehicles, along with a double garage offering additional storage options. The inclusion of solar panels with a battery storage enhancing the property's energy efficiency.

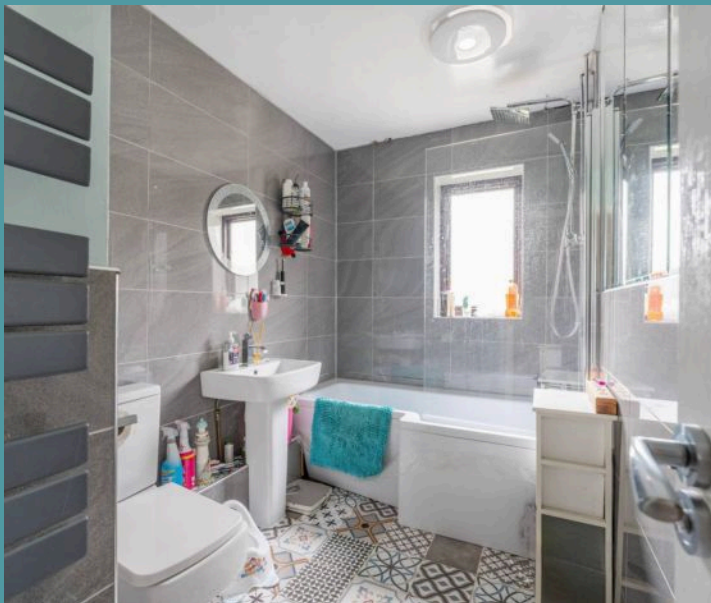
Agents Notes

We understand that this property is freehold. Connected to mains water, electricity, gas and drainage.

Heating system - Gas central heating.

Council Tax Band: D

- Guide price £300,000-£325,000
- Detached bungalow in the coastal village of Caister-On-Sea
- Perfect for a family, someone looking to downsize or if you require a single-floor layout
- Welcoming entrance hall, complemented by a convenient WC
- Comfortable sitting room inviting relaxation and entertaining
- Kitchen/dining room fitted with units, appliances and plenty of storage space
- Three bedrooms and a bathroom
- Driveway providing off-road parking and a double garage for storage options
- Solar panels with battery storage
- Double glazed windows and gas central heating



Ground Floor
1377 sq.ft. (127.9 sq.m.) approx.



Whilst every attempt has been made to ensure the accuracy of the floorplan contained here, measurements of doors, windows, rooms and any other items are approximate and no responsibility is taken for any error, omission or mis-statement. This plan is for illustrative purposes only and should be used as such by any prospective purchaser. The services, systems and appliances shown have not been tested and no guarantee as to their operability or efficiency can be given.
Made with Metropix ©2025

