



ASHLEY LANE

Hendon
London NW4



P
Permitted
1000
1000
1000

Chain Free

Freehold

Large gated driveway providing parking for numerous cars

Price £1,950,000

EPC Rating: C

Situated on a premier turning is this extended five bedroom detached family home which extends to 3134sq.ft (291.15 sq.m).

Arranged over three floors this well presented property comprises a modern spacious open plan kitchen dining room, two reception rooms, cloakroom and study to the ground floor.



The first floor boasts four bedrooms (two with ensembles) and family bathroom. The second floor encompasses one large master bedroom suite to include an oversized ensuite, walk in dressing room and roof terrace. Externally to the front there are electronically operated gates that lead to driveway parking and beautifully presented garden which is low maintenance. The property offers easy access to all of Hendon's local amenities and all major road transport links.



- Five Double Bedrooms
- Four Bathrooms (Three Ensuites)
- Three reception rooms
- Modern Spacious Kitchen/Dining room
- Study
- Ground floor Cloakroom
- Large gated driveway providing parking for numerous cars
- Detached Family Home
- Principal bedroom with walk in Dressing Room
- Beautiful landscaped Rear Garden
- Air conditioning
- Underfloor heating
- Chain Free

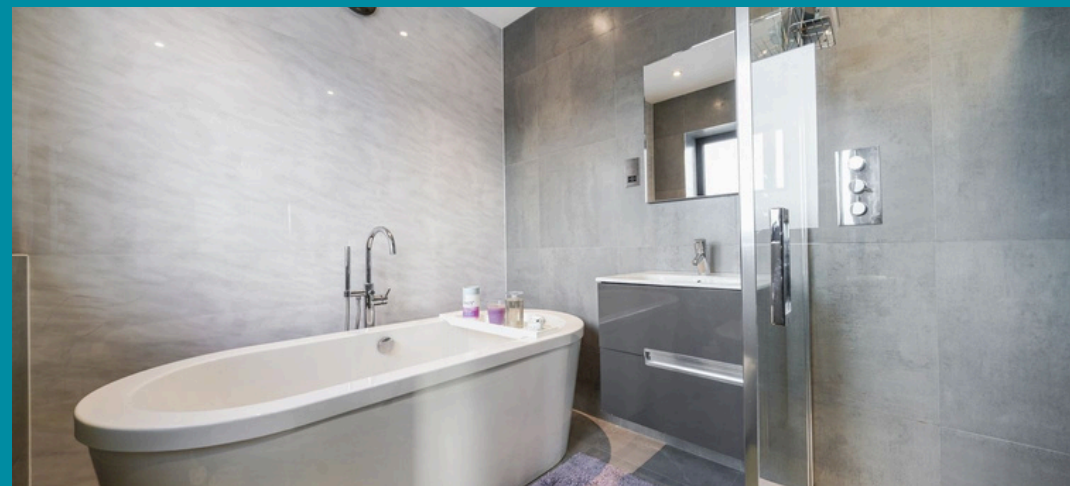
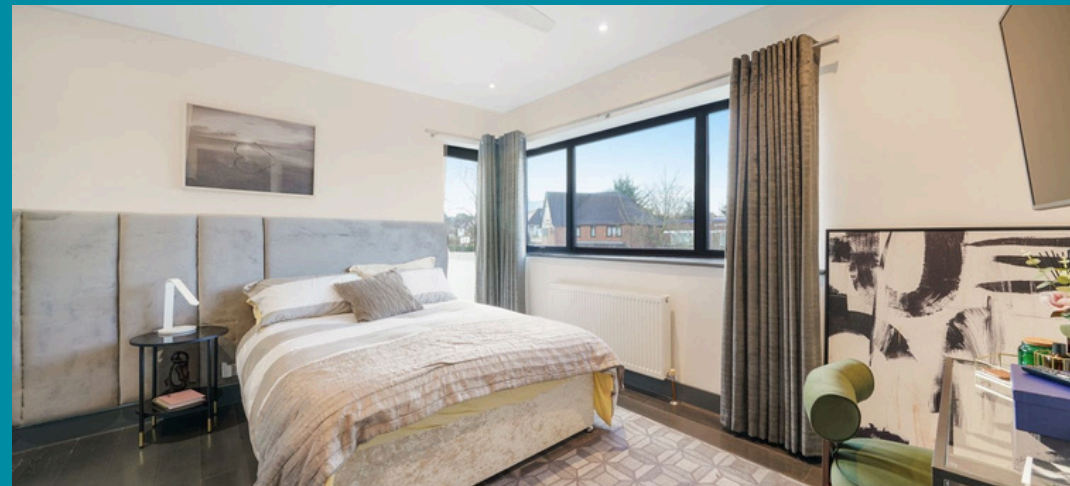




Hendon

Hendon is a cosmopolitan, multicultural area that benefits from a relaxed pace of life and a wide range of attractive amenities. Hendon's transport connections are excellent, with the M1 nearby and easy access to central London along the Northern Line. Thanks to its diverse population, Hendon has some of the best restaurants in north London, while its popularity with families ensures there is a good selection of schools.

While Hendon property prices have done well over the last few years, the area still represents a good-value option for renting or buying when compared against other parts of London.



Floorplan

Approximate gross internal area

306.7 sqm / 3,301.2 sqft



Ground Floor



Second Floor



First Floor

Total area (approx.): 306.7 sq. m (3,301.2 sq. ft)
Balcony / Terrace : 40.4 sq. m (434.9 sq. ft)

The floor plan is not to scale and measurements and areas shown are approximate and therefore should be used for illustrative purposes only. The plan has been prepared in accordance with the RICS code of Measuring Practice and whilst we have confidence that the information, it must not be relied on. Maximum widths and lengths are represented on the floor plan. If there is any aspect of particular importance, you should carry out or commission your own inspection of the property.

020 8203 2111
www.theroundtree.com

roundtree
real estate

To register your interest:

020 8203 2111

sales@theroundtree.com

theroundtree.com

1 Sentinel Square, Brent Street Hendon, NW4 2EL

roundtree

real estate

General: While we endeavor to make our sales particulars fair, accurate and reliable, they are only a general guide to the property and, accordingly, if there is any point which is of particular importance to you, please contact the office and we will be pleased to check the position for you, especially if you are contemplating travelling some distance to view the property. Measurements: These approximate room sizes are only intended as general guidance. You must verify the dimensions carefully before ordering carpets or any built-in furniture. Services: Please note we have not tested the services or any of the equipment or appliances in this property, accordingly we strongly advise prospective buyers to commission their own survey or service reports before finalizing their offer to purchase. THESE PARTICULARS ARE ISSUED IN GOOD FAITH BUT DO NOT CONSTITUTE REPRESENTATIONS OF FACT OR FORM PART OF ANY OFFER OR CONTRACT. THE MATTERS REFERRED TO IN THESE PARTICULARS SHOULD BE INDEPENDENTLY VERIFIED BY PROSPECTIVE BUYERS OR TENANTS. NEITHER ROUNDTREE NOR ANY OF ITS EMPLOYEES OR AGENTS HAS ANY AUTHORITY TO MAKE OR GIVE ANY REPRESENTATION OR WARRANTY WHATEVER IN RELATION TO THIS PROPERTY.