



Balfern Grove, London, W4 2JX

Guide Price £1,200,000

**WHITMAN & CO.**

SALES · LETTINGS · COMMERCIAL



- Four double bedrooms
- Two reception rooms
- Potential to remodel and extend (STPP)
- Sought after location
- Fantastic transport links
- No chain

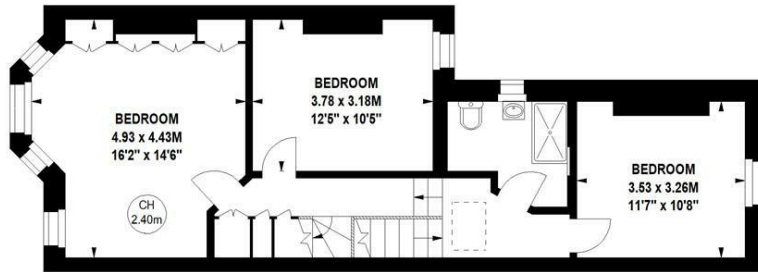
Tenure - Freehold  
Local Authority - Hounslow  
Council Tax - Band F

## THE PROPERTY

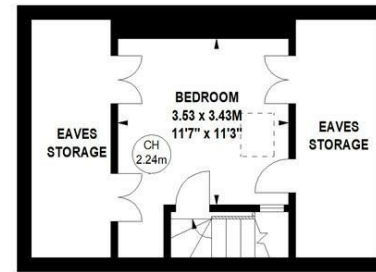
A four bedroom period family house ideally located in this quiet residential street offering close proximity to numerous amenities. Comprising four double bedrooms, two shower rooms, two reception rooms, kitchen/breakfast room and a private 20' garden. Situated in this tree lined residential road offering close proximity to Turnham Green tube station and the extensive range of shops, bars and restaurants on Chiswick High Road. No chain.

### Balfern Grove, W4

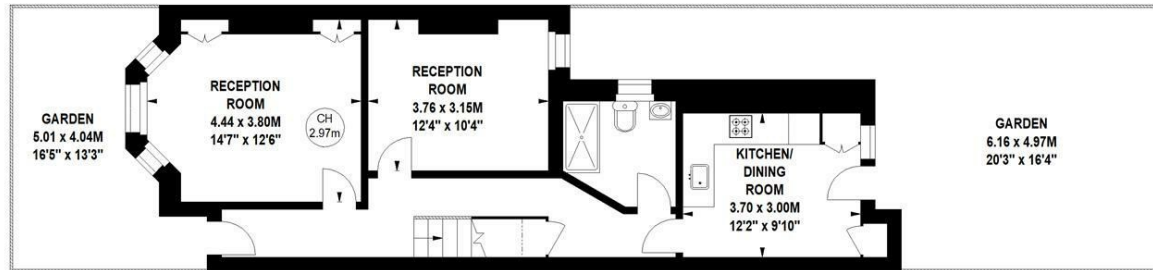
Approximate gross internal area  
**153.66 sq m / 1654 sq ft**  
(Including Eaves Storage)  
**Eaves Storage**  
**18.30 sq m / 197 sq ft**



First Floor



Second Floor



Ground Floor

Not to scale, for guidance only and must not be relied upon as a statement of fact.  
All measurements and areas are approximate only

## SITUATION



5-7 Turnham Green Terrace, Chiswick, London, W4 1RG

Tel 020 8747 8800

E-mail [sales@whitmanandco.com](mailto:sales@whitmanandco.com)

Website [www.whitmanandco.com](http://www.whitmanandco.com)