



7 Falcon Crescent, Costessey
£160,000

7 Falcon Crescent

Costessey, Norwich

This well-maintained two-bedroom apartment presents a great opportunity for first-time buyers, investors, or those looking to downsize. The open-plan living and dining area, paired with a modern kitchen, offers a functional space for both relaxation and entertaining. Natural light floods the apartment through Juliette balcony windows, creating a bright and inviting atmosphere. The generously sized bedrooms provide a peaceful setting, with the master featuring an ensuite and built-in wardrobes. Additional features include a quality bathroom, allocated parking and visitor spaces, making it an appealing choice for both homebuyers and investors.

The Location

Falcon Crescent, Costessey, NR8 is located in a quiet residential area in the outskirts of Norwich, offering a blend of suburban convenience and natural surroundings. The property is just 4 miles west of Norwich city centre, making it a short drive to a wide range of amenities, shops, and services. Nearby, you'll find popular retail locations like the Longwater Retail Park, just a mile away, which includes stores such as Home Bargains and The Range. For grocery shopping, Sainsbury's is approximately 2 miles away. Additionally, the area is well-served by public transport links to Norwich, with bus routes running regularly along the main roads nearby. Local parks and green spaces like Costessey Park are also within easy reach, offering great opportunities for outdoor activities.





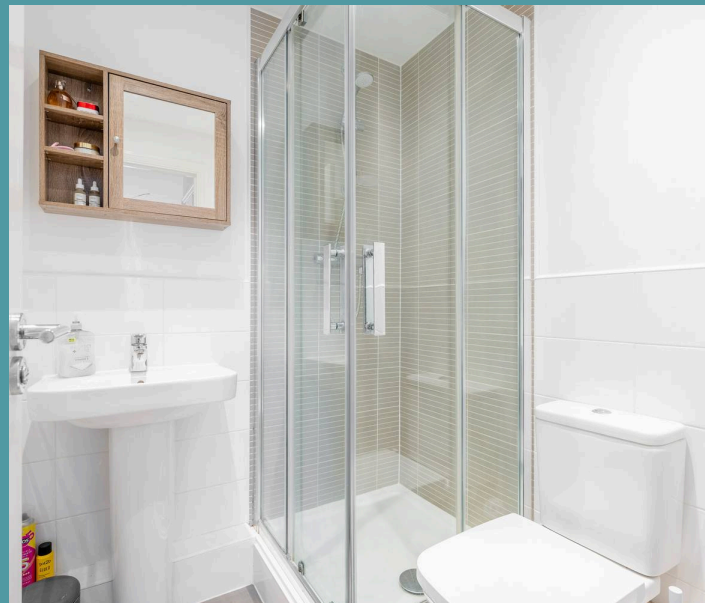
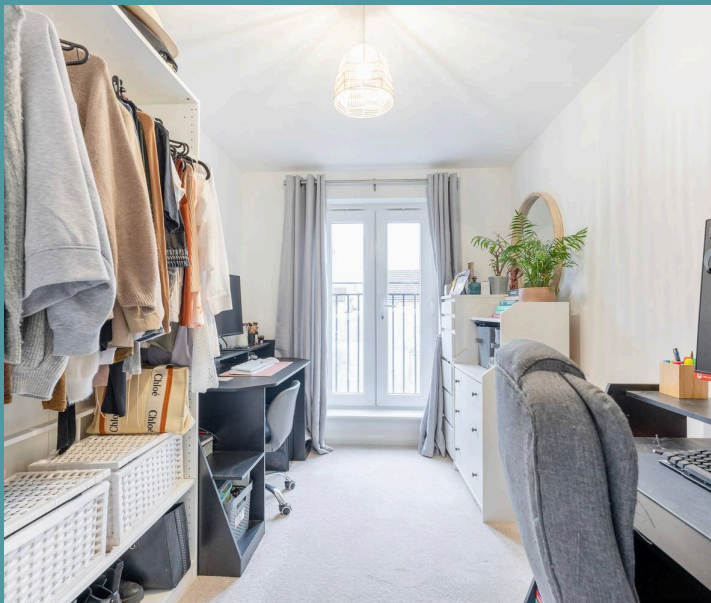
7 Falcon Crescent

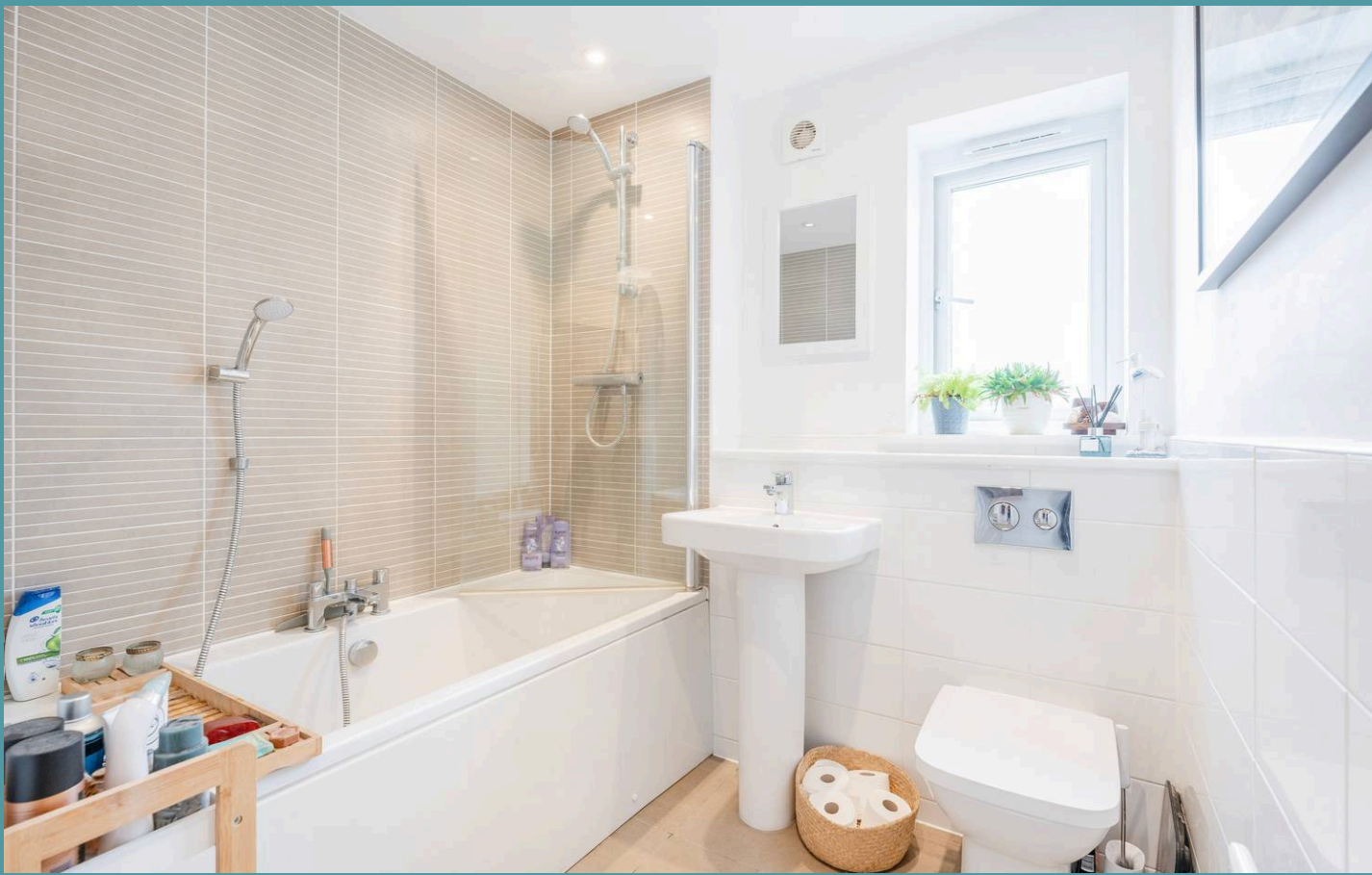
Costessey, Norwich

Falcon Crescent

This immaculate two-bedroom apartment offers a fantastic opportunity for first-time buyers, investors, or those looking to downsize. The property is in excellent condition and move-in ready, providing a modern, low-maintenance lifestyle. Perfectly positioned in a vibrant community, this apartment combines convenience and comfort, making it an ideal choice for anyone seeking a stylish, hassle-free home.

The spacious open-plan living and dining area, complemented by a contemporary kitchen, forms the heart of the home. Natural light pours through the Juliette balcony windows, creating a bright and inviting space for both everyday living and entertaining. The modern kitchen is fully equipped with integrated appliances and plenty of storage, making it a functional and appealing area for cooking and dining.





7 Falcon Crescent

Costessey, Norwich

Both bedrooms are generously sized, offering a peaceful environment. The master bedroom includes an ensuite and built-in wardrobes for added convenience. The second bedroom is versatile, perfect for a guest room, home office, or nursery. The property also features a high-quality bathroom, one allocated parking space, and additional visitor parking, further enhancing its appeal as both a first-time purchase and a rental investment.

Agents Note

Sold Leasehold

Connected to all mains services.

994 years remain on the lease

Ground Rent £1600p/a



