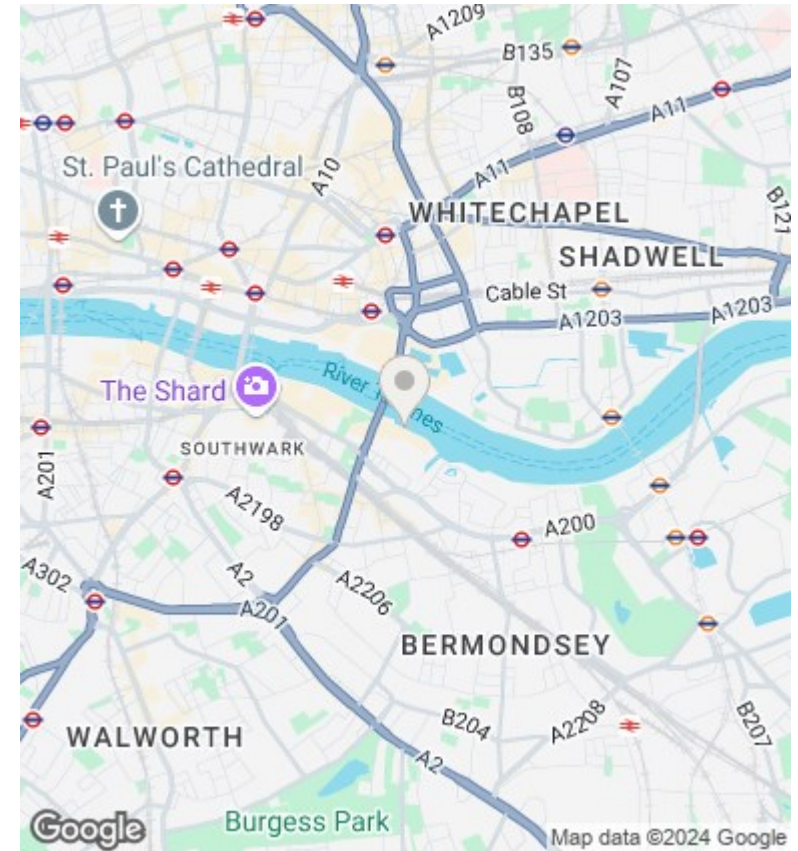
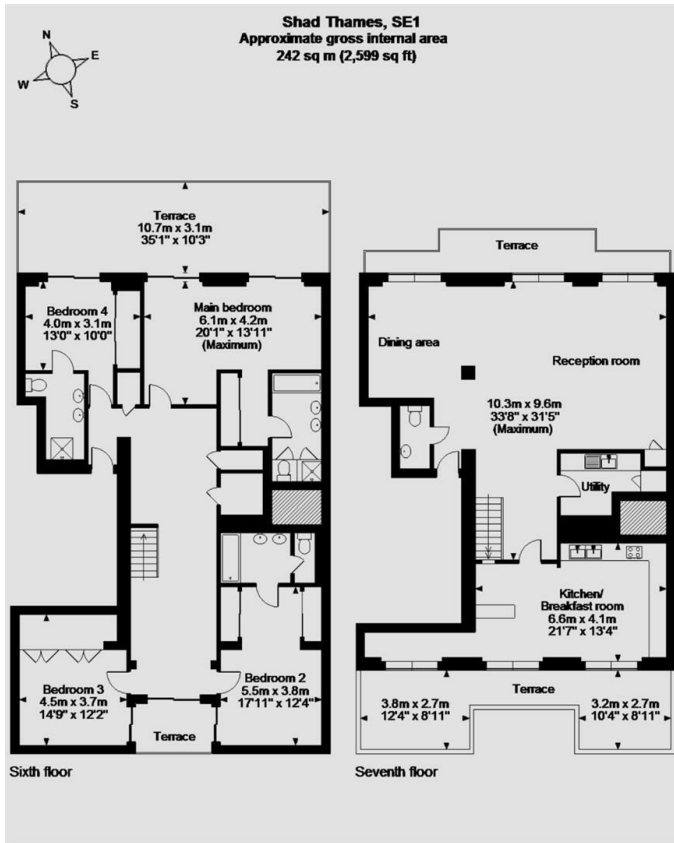




## Butlers Wharf, Shad Thames, London Bridge, London SE1 2YE

£12,500

- PENTHOUSE
- SEPERATE EAT IN KITCHEN , DINNING ROOM
- AMZING VIEWS OF RIVER AND TOWER BRIDGE
- 24H CONCIERGE
- 4 PRIVATE TERRACES
- WALKING DISTANCE TO LONDON BRIDGE STATION
- 4 BEDROOMS , 3 BATHROOMS AND GUESST WC
- VIDEO VIEWING AVAILALBE
- ONE ALLOCATED PARKING SPACE



## Viewings

Viewings by arrangement only.  
Call 02077225022 to make an appointment.

## Council Tax Band

D

## EPC Rating:

C

Energy Efficiency Rating		
	Current	Potential
Very energy efficient - lower running costs		
(92 plus) <b>A</b>		
(81-91) <b>B</b>	76	
(69-80) <b>C</b>		
(55-68) <b>D</b>		
(39-54) <b>E</b>		
(21-38) <b>F</b>		
(1-20) <b>G</b>		
Not energy efficient - higher running costs		
<b>England &amp; Wales</b>	EU Directive 2002/91/EC	