



7 Pound Road, North Walsham  
£270,000



# 7 Pound Road

North Walsham, North Walsham

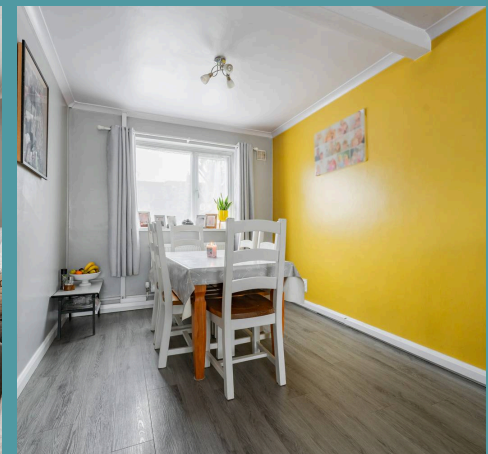
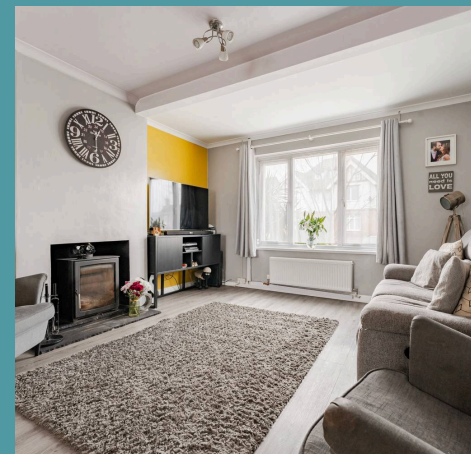
This generous four-bedroom home in North Walsham offers a well-designed layout that's perfect for family living, combining modern comfort with thoughtful upgrades. The open-plan living and dining area, featuring a cosy log-burning stove, creates an inviting space for both relaxation. Upstairs, you'll find spacious bedrooms with built-in storage, while the recently updated kitchen, utility area, and versatile ground-floor bedroom provide ample practical living space. Outside, the property boasts an enclosed rear garden with a terraced area, lawn, and deck, plus off-road parking to the front—a rare find in a terraced home.

Council Tax band: B

Tenure: Freehold

EPC Energy Efficiency Rating: C

EPC Environmental Impact Rating:







## 7 Pound Road

North Walsham, North Walsham

This generous four-bedroom home in North Walsham offers a well-designed layout that's perfect for family living, combining modern comfort with thoughtful upgrades. The open-plan living and dining area, featuring a cosy log-burning stove, creates an inviting space for both relaxation. Upstairs, you'll find spacious bedrooms with built-in storage, while the recently updated kitchen, utility area, and versatile ground-floor bedroom provide ample practical living space. Outside, the property boasts an enclosed rear garden with a terraced area, lawn, and deck, plus off-road parking to the front—a rare find in a terraced home.

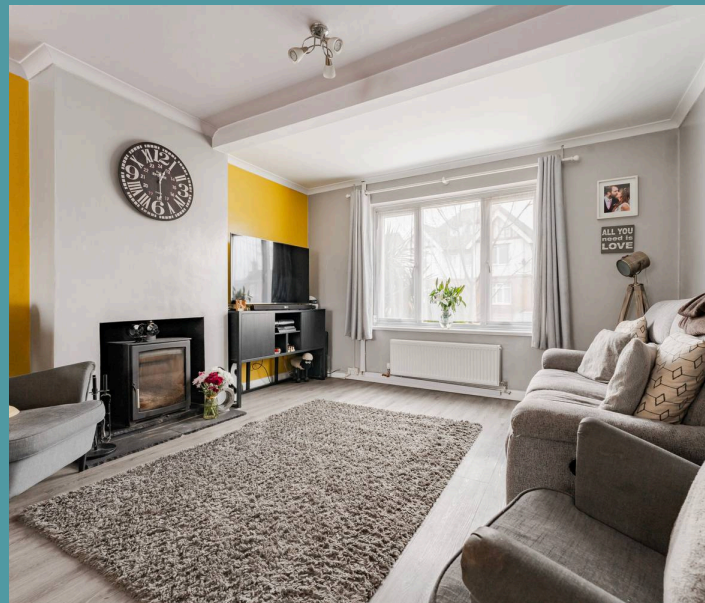
### The Location

North Walsham is a bustling market town offering schooling for all ages, easy access to the city and also the North Norfolk coast plus all essential shops and amenities plus its local train station which is approx 0.8 miles away.

You can walk to attend a weekly market in the town centre, a range of supermarkets, GP surgeries, parks and schools for all ages are also available. You can find the UEA, Science park & University hospital around 18 miles away, 12 miles to Norwich Airport, 15 miles to Norwich Railway Station giving access to London and further afield plus 8.3 miles to Cromer.

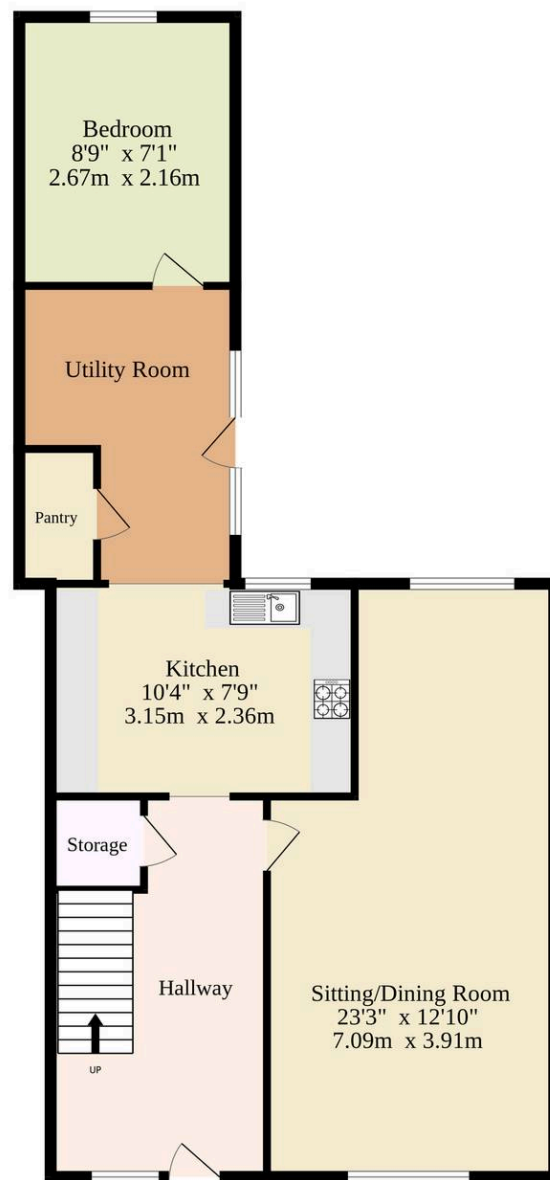
### Pound Road

This spacious four-bedroom home in North Walsham is perfect for families, offering a fantastic layout and a welcoming atmosphere in a well-connected location. From the moment you step

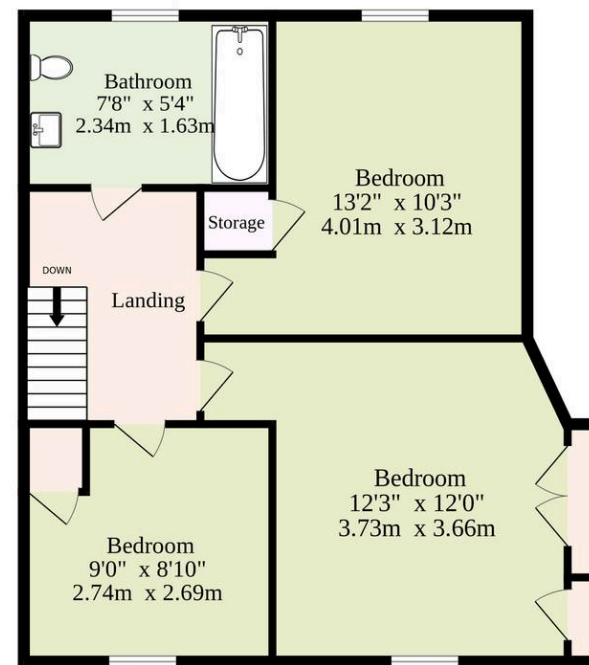




Ground Floor  
568 sq.ft. (52.8 sq.m.) approx.



1st Floor  
450 sq.ft. (41.8 sq.m.) approx.



TOTAL FLOOR AREA : 1018 sq.ft. (94.6 sq.m.) approx.

Whilst every attempt has been made to ensure the accuracy of the floorplan contained here, measurements of doors, windows, rooms and any other items are approximate and no responsibility is taken for any error, omission or mis-statement. This plan is for illustrative purposes only and should be used as such by any prospective purchaser. The services, systems and appliances shown have not been tested and no guarantee as to their operability or efficiency can be given.

Made with Metropix ©2025