



Palmer & Partners



Palmer & Partners

Pine Close, Rendlesham, Suffolk, IP12 2GD

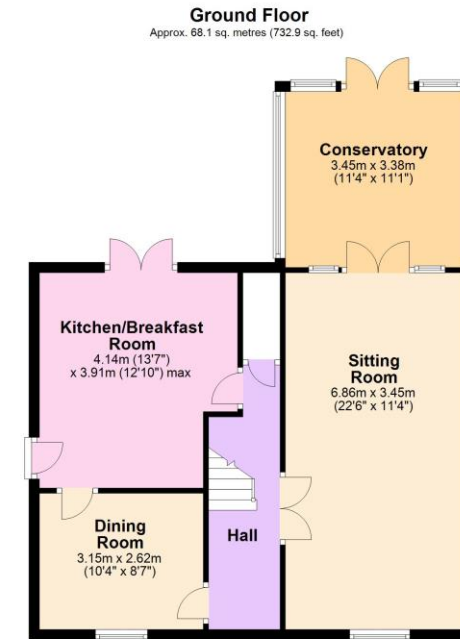
Asking Price: £425,000

Pine Close, Rendlesham, Woodbridge, Suffolk, IP12 2GD

This beautifully presented and ultra stylish four bedroom detached house situated down a quiet close within the sought after village of Rendlesham has been much improved by the current owners including redecoration throughout; new cloakroom, kitchen and en-suite; and new warm roof in conservatory. This wonderful family home further benefits from a lovely rear garden with large patio and bespoke bar, driveway providing off-road parking for one car, and garage with utility space to the rear which is accessed via the rear garden. As agents, we recommend the earliest possible internal viewing to appreciate the quality of accommodation on offer which comprises entrance hall; refitted ground floor cloakroom; 22ft sitting room; conservatory with recently fitted warm roof making this an all year round room; refitted kitchen / breakfast room; second reception / playroom / study; first floor landing; family bathroom; and four double bedrooms, one of which has a refitted en-suite shower room.

The popular village of Rendlesham is approximately six miles of the market town of Woodbridge and built around the former RAF Bentwaters. Village amenities include community centre, doctor's surgery, dentist, supermarket with Post Office, vets, hairdressers, fish & chip shop, bar, as well as taxi companies and a range of businesses on Bentwaters Park and Rendlesham Mews. The village also has a primary school, children's nursery, care home and two churches and there are two buses that run through the village. Rendlesham Forest is a haven for walkers and cyclists with the Arts & Cultural centre of Snape Maltings within striking distance.

Council tax band: D
EPC Rating: C



Total area: approx. 124.4 sq. metres (1338.7 sq. feet)

Although every attempt has been made to ensure the accuracy of this floorplan measurements of doors, windows, rooms and any other items are approximate and no responsibility is taken for any error, omission or mis-statement. This plan is for illustrative purposes only.
Plan produced using PlanUp.



