



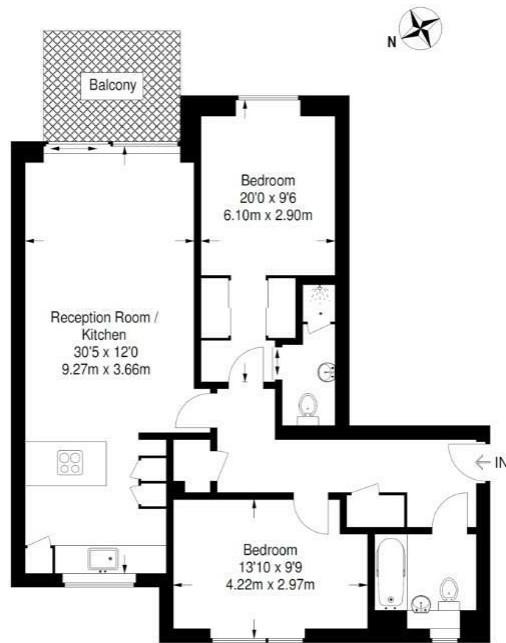
Amberley Waterfront, Amberley Road, Little Venice W9 2JJ

£950,000

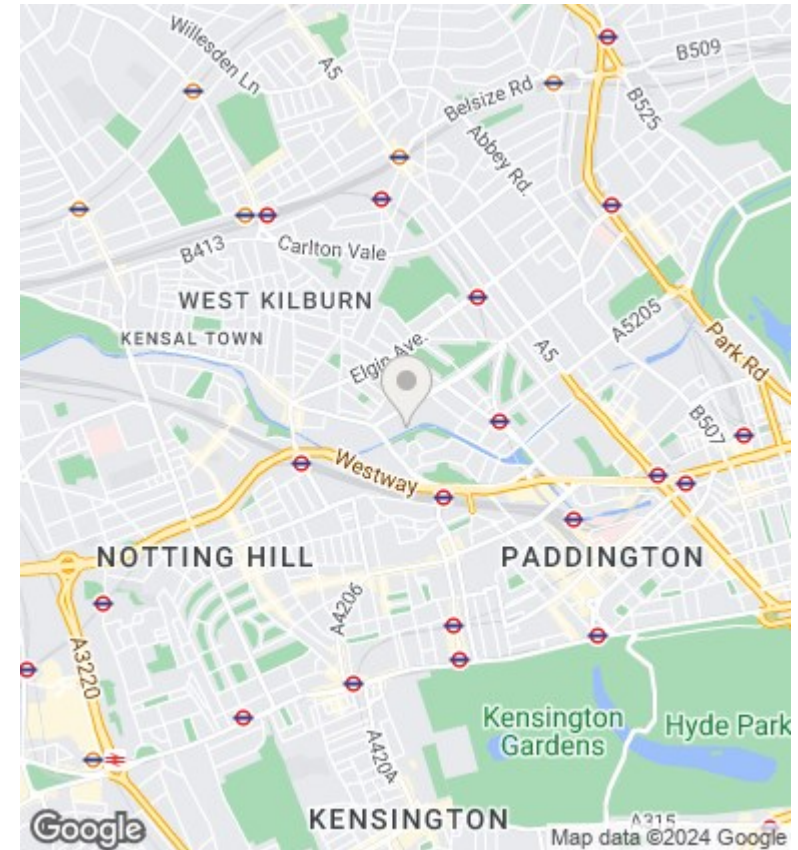
- CONCIERGE
- PRIVATE BALCONY
- WALKING DISTANCE TO BAYSWATER ,
MARYLEBONE , ST JOHNS WOOD AND NOTTING HILL
- VIDEO VIEWING AVAILABLE
- SOUTH FACING
- WESTMINSTER COUNCIL TAX
- UNDER FLOOR HEATING
- ALLOCATED PARKING SPACE

Amberley Waterfront

Approximate Gross Internal Area
875 sq ft / 81.3 sq m



Second Floor



Viewings

Viewings by arrangement only.
Call 02077225022 to make an appointment.

Council Tax Band

F

EPC Rating:

Energy Efficiency Rating		Current	Potential
<i>Very energy efficient - lower running costs</i>			
(92 plus)	A		
(81-91)	B		
(69-80)	C		
(55-68)	D		
(39-54)	E		
(21-38)	F		
(1-20)	G		
<i>Not energy efficient - higher running costs</i>			
England & Wales		EU Directive 2002/91/EC 