



A REMARKABLE FOUR/FIVE BEDROOM, TWO BATHROOM DETACHED FAMILY HOME

Daymer Gardens, Pinner, HA5 2HP

ROBSONS

A REMARKABLE FOUR/FIVE BEDROOM, TWO BATHROOM HOME

Daymer Gardens, Pinner, HA5 2HP

**ENTRANCE HALLWAY • GUEST CLOAKROOM •
TWO RECEPTION ROOMS • IMPRESSIVE
KITCHEN/DINER • FOUR DOUBLE BEDROOMS,
ONE EN-SUITE • DRESSING ROOM • LUXURY
FAMILY BATHROOM • ATTRACTIVE GARDEN •
OFF-STREET PARKING • AIR CONDITIONING •**

Description

An exquisite four/five bedroom, two bathroom, detached family home offering both luxury and comfort across two floors, with a contemporary layout to the ground floor, perfect for entertaining. This remarkable home occupies a generous plot on a quiet, residential road within easy reach of local high streets, schools and excellent transport links.

The ground floor comprises a stunning entrance hallway with marble affect flooring that continues throughout the ground floor. There are two generous, front aspect reception rooms with the smaller of the two being ideal for a home office / study, and an exceptional kitchen/diner overlooking the rear garden. The kitchen features a range of bespoke units with high-specification, integrated appliances, a breakfast bar and a separate utility room.





A large light-filled dining area completes the room, with an adjoining door to the main reception room, perfect for entertaining. To the first floor there are four well-appointed double bedrooms with one benefiting from fitted wardrobes, and another boasting a modern en-suite. There is a good size dressing room complete with fitted wardrobes, and a luxury family bathroom.

Externally this fantastic home offers a beautifully presented garden that is laid to lawn with a patio area for alfresco dining in the summer months. To the front there is a sizeable driveway providing off-street parking for several cars.

Location

Located on a peaceful road within easy reach of Pinner, Northwood Hills and Eastcote, this property just a short distance from a variety of shopping facilities, restaurants, coffee houses and popular supermarkets. For commuters, the Metropolitan Line is available at Northwood Hills and Pinner station, with Eastcote offering the Metropolitan and Piccadilly lines, all provide a frequent service into London. The area is well served by primary and secondary schooling, children's play areas and recreational facilities.

Additional Information

Guide Price: Price on Application

Tenure: Freehold

Local Authority: London Borough of Hillingdon

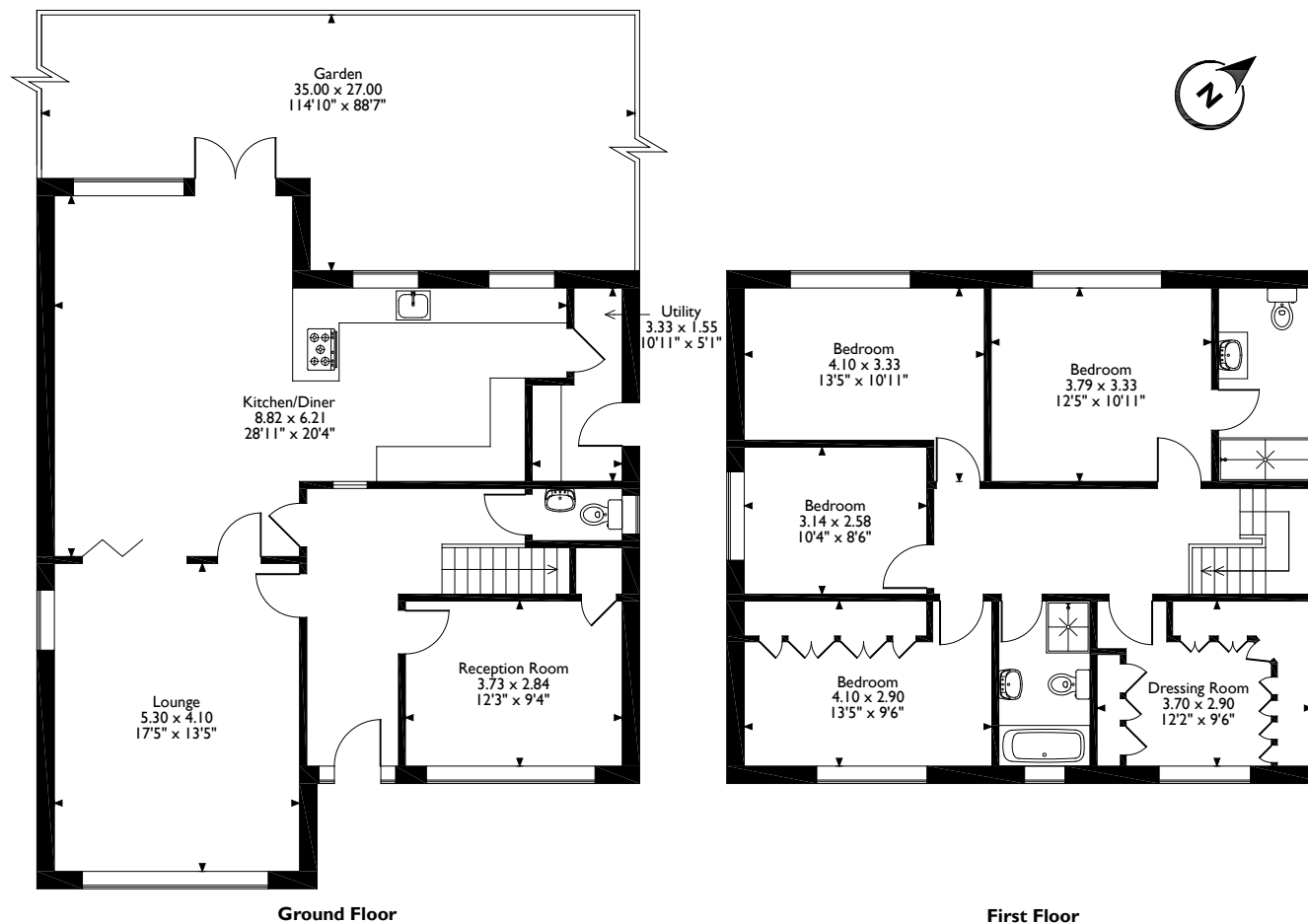
Council Tax: Band G

Energy Efficiency Rating: Band C



Daymer Gardens, Pinner

Approximate Gross Internal Area 175 Sq M/1884 Sq Ft



Please note that the location of doors, windows and other items are approximate and this floorplan is to be used for illustrative purposes only. Unauthorized reproduction is prohibited.

ROBSONS

1 High Street, Pinner, Middlesex, HA5 5PJ
Tel: 0208 866 8083 Pinner@robsonswb.com
www.robsonswb.com

www.the-londonoffice.co.uk
40 ST JAMES'S PLACE SW1

Important notice: Robsons, their clients and any joint agents give notice that 1: They are not authorised to make or give any representations or warranties in relation to the property either here or elsewhere, either on their own behalf or on behalf of their client or otherwise. They assume no responsibility for any statement that may be made in these particulars. These particulars do not form part of any offer or contract and must not be relied upon as statements or representations of fact. 2: Any areas, measurements or distances are approximate. Plot sizes and dimensions are taken from Promap and are approximate. The text, photographs and plans are for guidance only and are not necessarily comprehensive. It should not be assumed that the property has all necessary planning, building regulation or other consents and Robsons have not tested any services, equipment or facilities. Purchasers must satisfy themselves by inspection or otherwise.