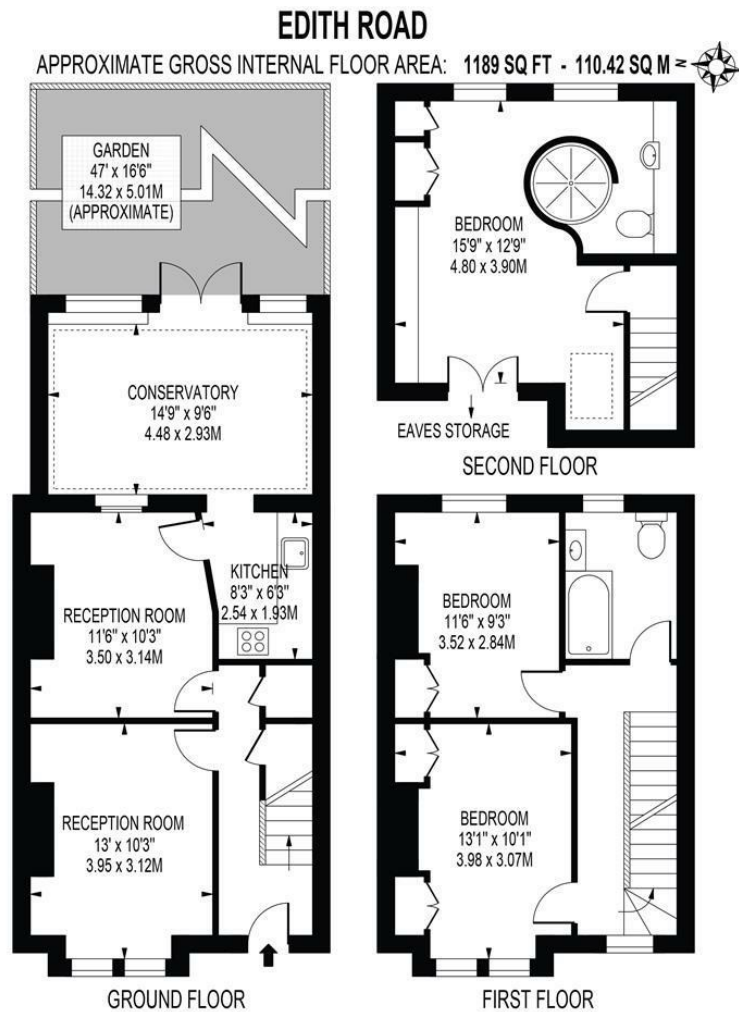


**12 Edith Road
Wimbledon, SW19 8TW**

£950,000 Freehold

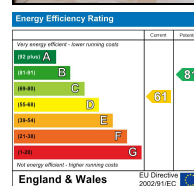


Viewings Commence Saturday 2nd November - An extremely well presented, three bedroom, two bathroom, Victorian terraced family home close to Holy Trinity School, South Park Gardens and Wimbledon Town Centre. On the ground floor is a bright front reception, separate dining room, well appointed kitchen with doors that open onto a fabulous conservatory and beautiful mature rear garden. Upstairs there are two double bedrooms, a modern family bathroom and a fantastic principal bedroom with en-suite in the converted loft. Offered to the market with no onward chain, a viewing is highly recommended.



THIS FLOOR PLAN SHOULD BE USED AS A GENERAL OUTLINE FOR GUIDANCE ONLY AND DOES NOT CONSTITUTE IN WHOLE OR IN PART AN OFFER OR CONTRACT. ANY INTENDING PURCHASER OR LESSEE SHOULD SATISFY THEMSELVES BY INSPECTION, SEARCHES, ENQUIRIES AND FULL SURVEY AS TO THE CORRECTNESS OF EACH STATEMENT. ANY AREAS, MEASUREMENTS OR DISTANCES QUOTED ARE APPROXIMATE AND SHOULD NOT BE USED TO VALUE A PROPERTY OR BE THE BASIS OF ANY SALE OR LET.

- South Park Gardens Location
- Victorian Terraced House
- Three Bedrooms
- Two Bathrooms
- Highly Sought After Local Schools
- Excellent Commuter Links
- No Onward Chain
- Freehold
- EPC Rating D
- Council Tax Band E



For Free Mortgage Quote and Best Mortgage Rates, call an Ellisons Mortgage Advisor on 020 8944 9494