

## Sandringham Avenue Wimbledon Chase, SW20 8JY

£995,000 Freehold



This superb (1393 sqft - 129.43 sqm) FOUR BEDROOM 1930's Mid terrace house has a stunning 7.23m x 5.46m open plan kitchen/dining/family room with quartz worktops, island and bi folding doors onto the West facing garden. Perfectly located within the Admissions Priority Area for Wimbledon Chase Primary School, Wimbledon Chase Station and access for both Raynes Park and Wimbledon. There is also an entrance hall with storage, downstairs w.c, spacious separate reception room with wood burner, plantation shutters and a modern family bathroom. Residents Parking Permits available for on street parking.



Although these particulars are believed to be correct, their accuracy is not guaranteed and they do not form part of any contract.

**Celebrating 30 years  
of successful Sales and  
Lettings in Merton**



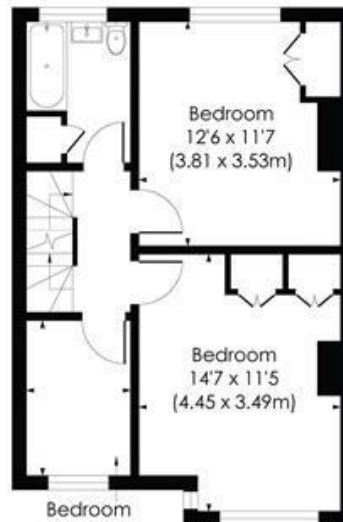
## SANDRINGHAM AVENUE, SW20

Approx. Gross Internal Floor Area

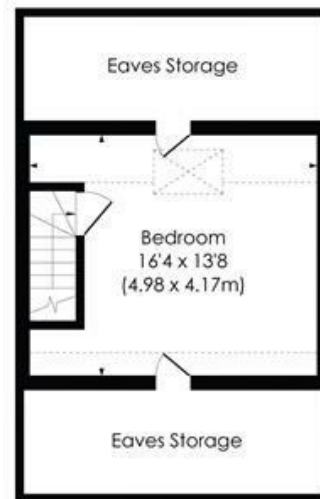
1393 Sq. ft/129.43 Sq. m



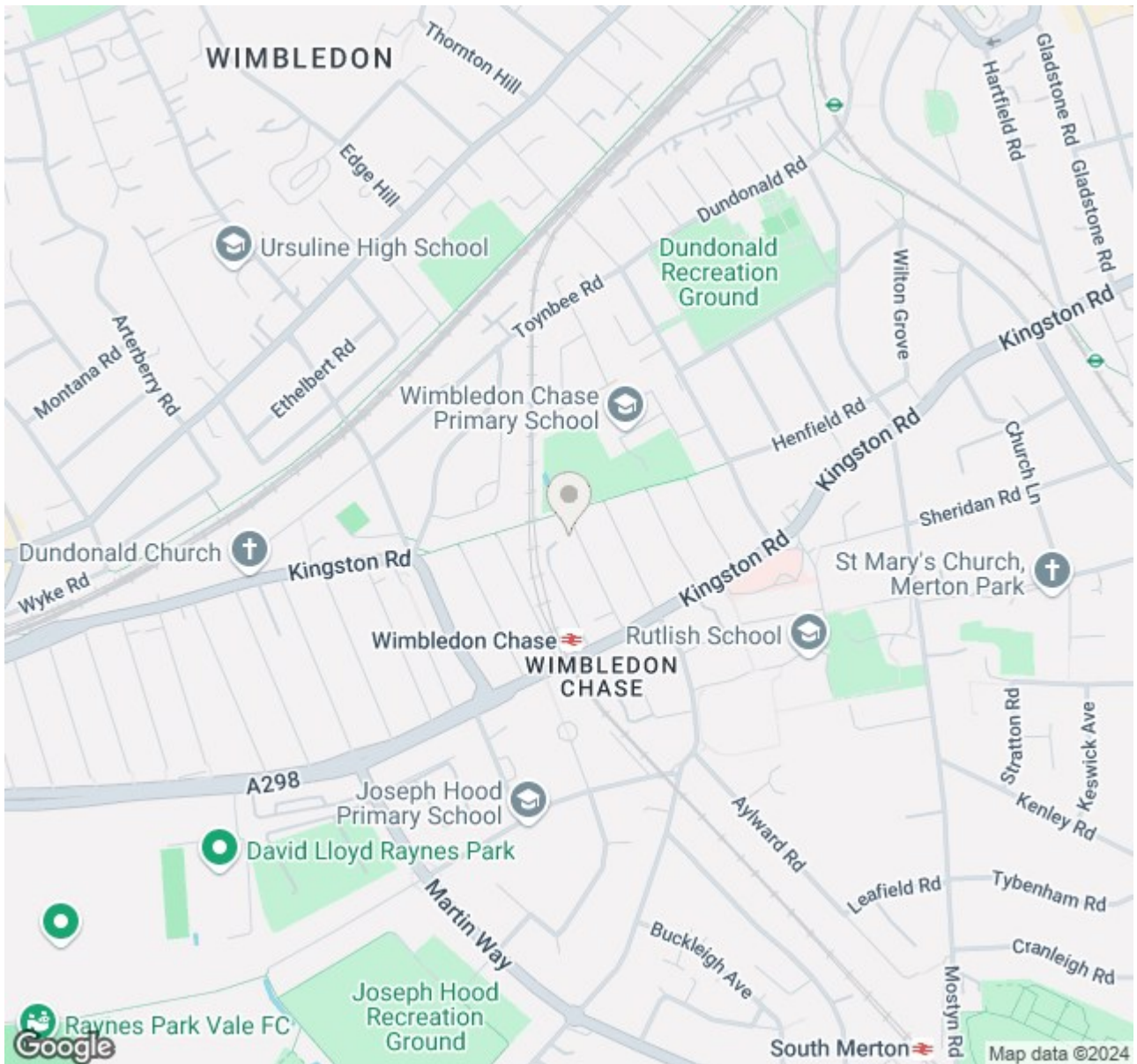
GROUND FLOOR



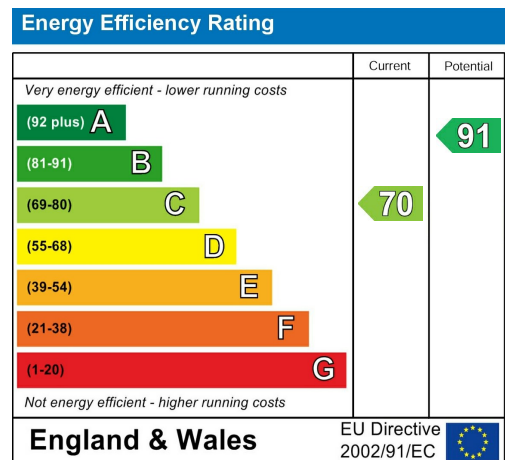
FIRST FLOOR



SECOND FLOOR



- Four Bedroom 1930s Terrace House
- Wimbledon Chase Primary School A.P.A
- Secluded West Facing Garden with Rear Access
- Close to Wimbledon Chase Station and Shops
- Easy Access to Raynes Park
- Easy Access to Wimbledon Town Centre
- Stunning Kitchen/Dining/Family Room
- Downstairs W.C and Spacious Reception Room
- EPC Rating - C
- Council Tax Band - E



For Free Mortgage Quote and Best Mortgage Rates, call Ellisons Mortgage Advisor on 0208 944 9595



Although these particulars are believed to be correct, their accuracy is not guaranteed and they do not form part of any contract.

Celebrating 30 years of successful Sales and Lettings in Merton

