



Cliff Field 2 – ABI Sunningdale, Coast Road, Broadland Sands Holiday Park

Cliff Field 2 – ABI Sunningdale, Coast Road

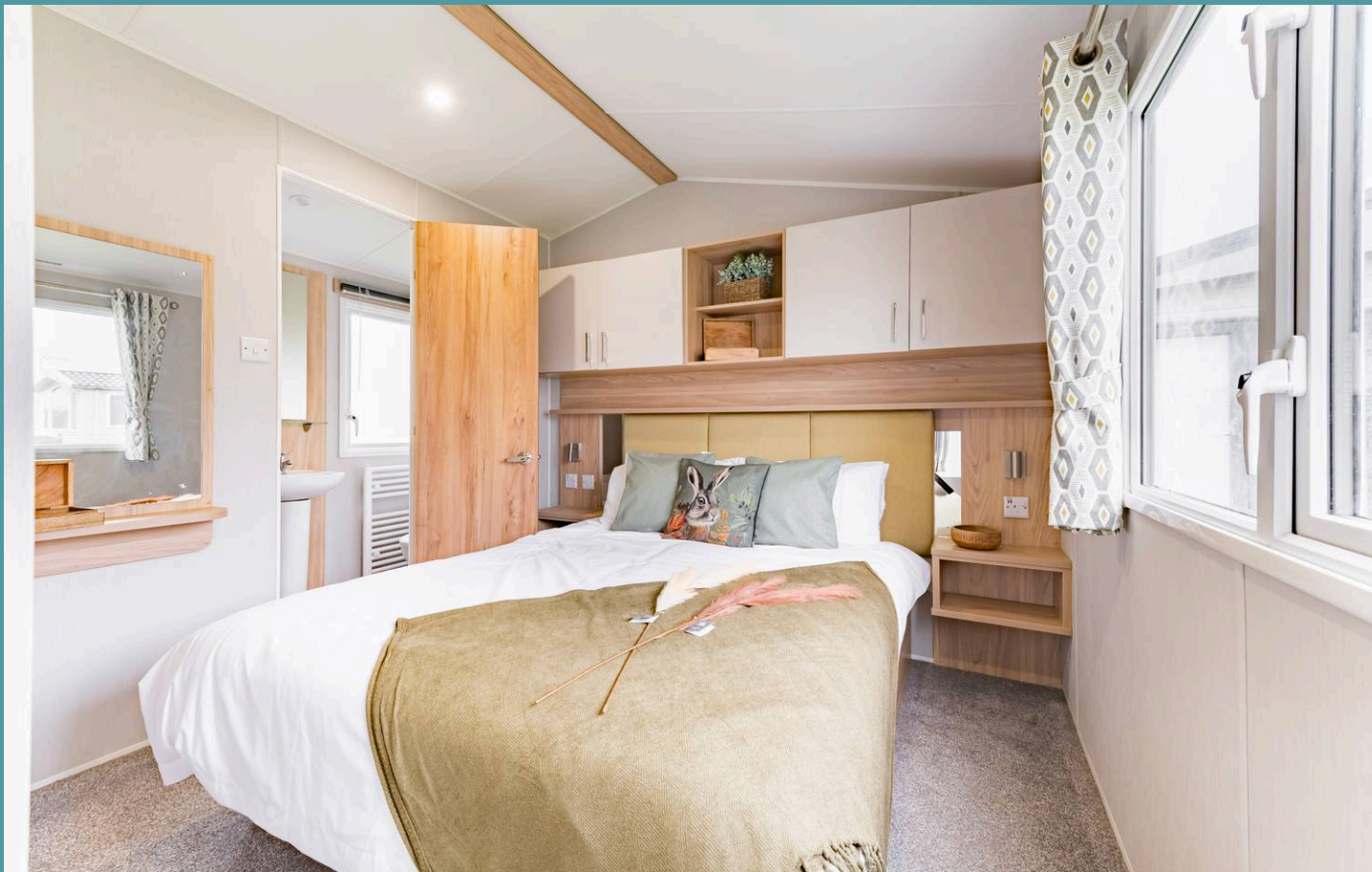
Broadland Sands Holiday Park, Corton

Escape to the prestigious Broadland Sands Holiday Park in the coastal village of Corton, where you will find a high-end holiday home. Promising an experience like no other, its fantastic range of on-site facilities accommodate all ages, with an indoor swimming pool, adventure golf course, family entertainment, mini mart shop, a restaurant and much more! Highlighting an open-plan living space with modern fixtures and fittings and comfortable accommodation that can adapt to suit guests or children. Don't miss the chance to acquire this exceptional holiday home and enjoy life by the sea.

Location

Corton is a charming village nestled in the North of the English County of Suffolk. Conveniently positioned halfway between the bustling centres of Lowestoft and Hopton, it rests alongside the A47, offering easy access for travellers. The village boasts a picturesque coastal charm with its proximity to Corton Beach, inviting residents and visitors to enjoy the serene coastline. Additionally, nature enthusiasts can revel in the beauty of Corton Woods, a local woodland area. Pleasurewood Hills Family Theme Park is also located nearby, perfect for a days out with your family and friends. With convenient transportation options, the nearby Lowestoft Train Station offers services on the Wherry and East Suffolk Lines, connecting travellers to both Norwich and Ipswich.



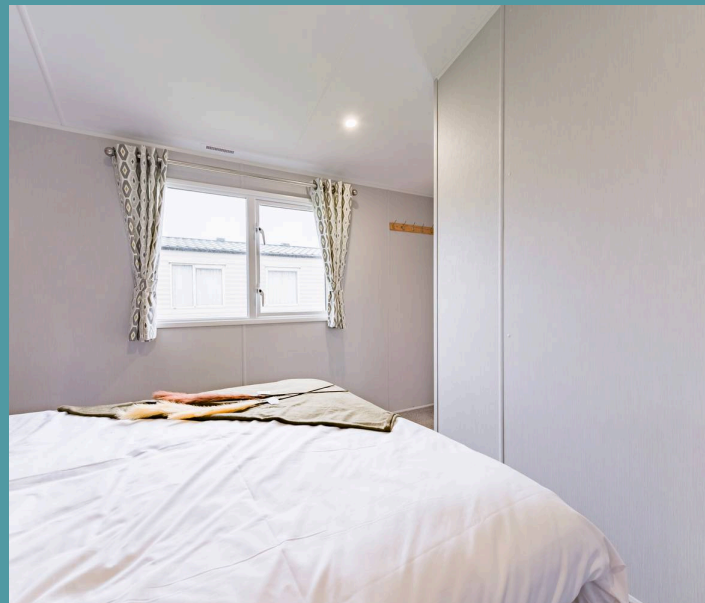
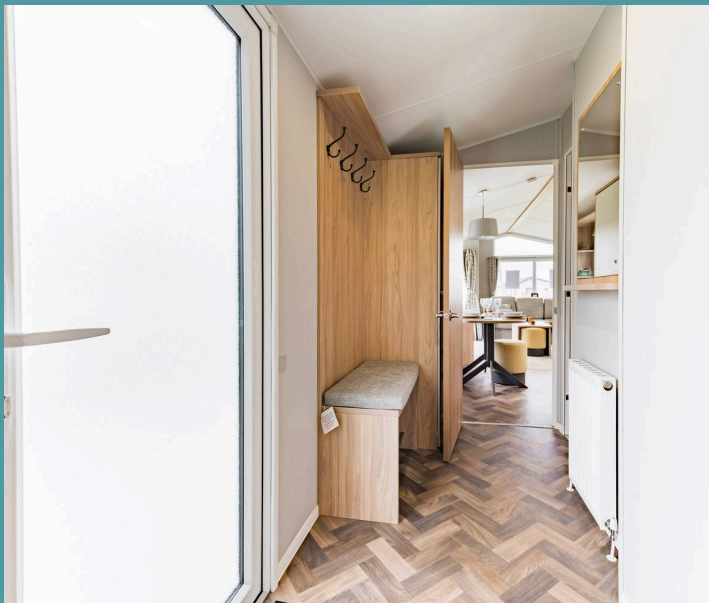


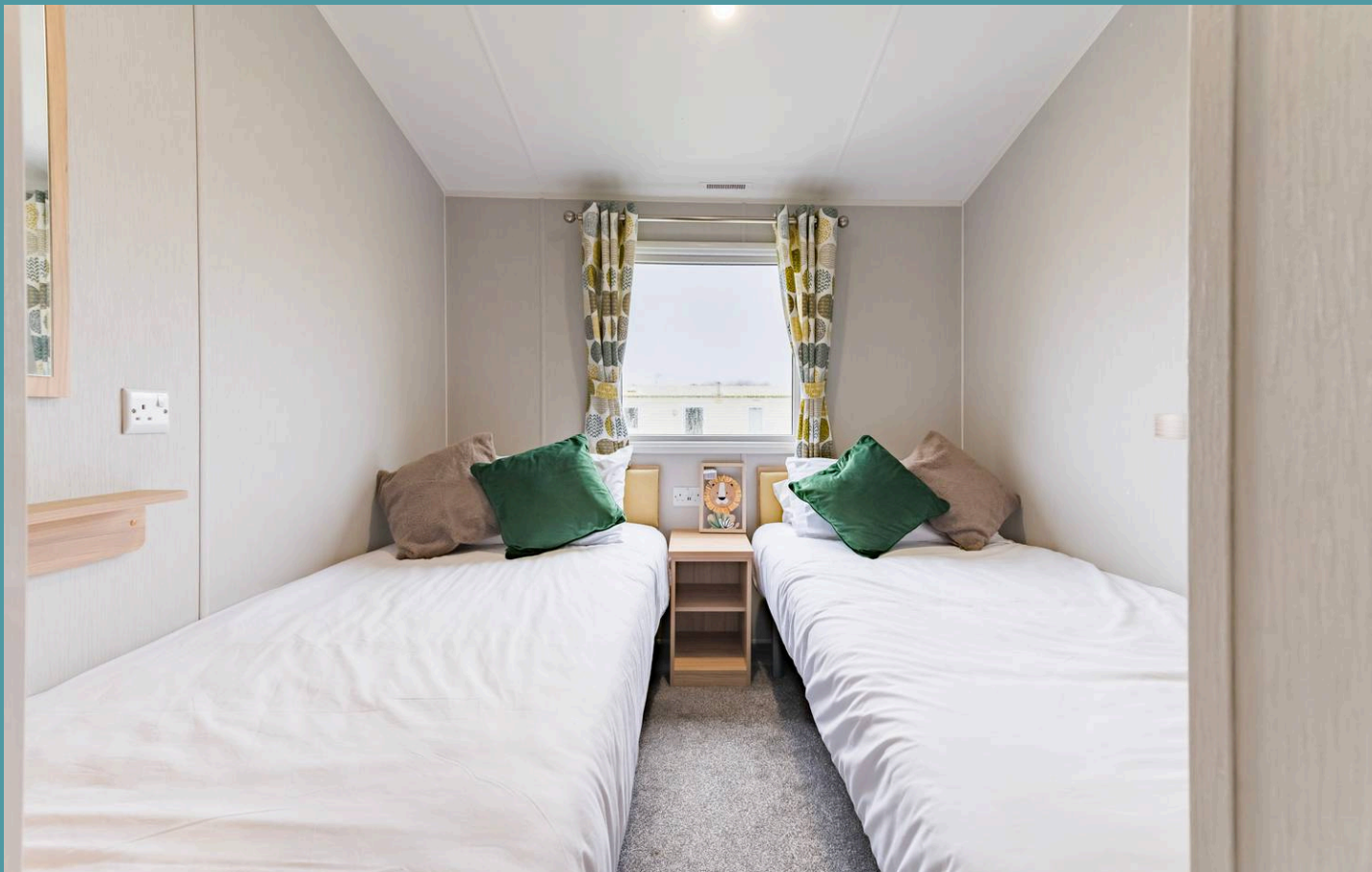
Cliff Field 2 – ABI Sunningdale, Coast Road

Broadland Sands Holiday Park, Corton

Broadland Sands Holiday Park

Escape to the Broadland Sands holiday park for an unforgettable summer vacation! With a wealth of fantastic facilities, ensuring a delightful experience for all guests. Dive into excitement at the indoor pool with its thrilling 45-meter flume and paddling pool for little ones. Embark on a roarsome adventure with the dinosaur-themed golf course, promising laughter and friendly competition. Be captivated by the family entertainment venue, offering a medley of shows and activities. Unwind at the sports bar and lounge, savouring the relaxed atmosphere and catching up on live sports. Indulge your taste buds at the restaurant or grab a quick bite from the takeaway facilities. Broadland Sands holiday park is the ultimate summer destination, catering to all ages with its diverse array of amenities and ensuring cherished memories for years to come.





Cliff Field 2 – ABI Sunningdale, Coast Road

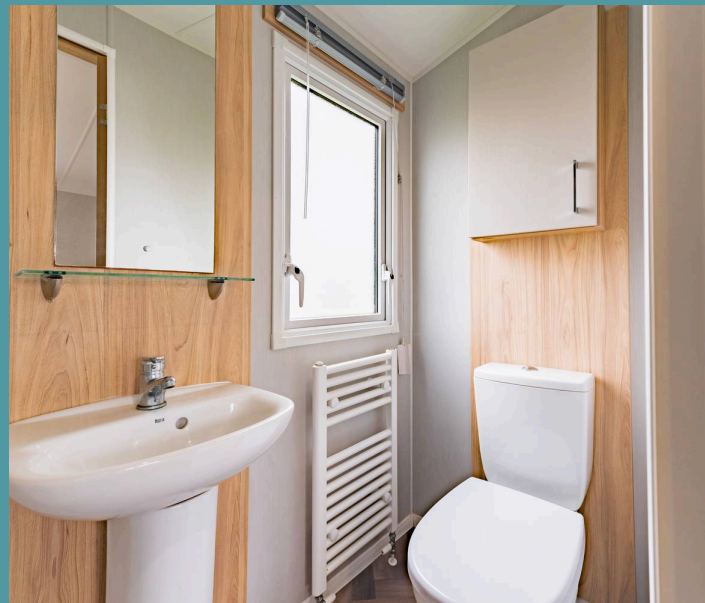
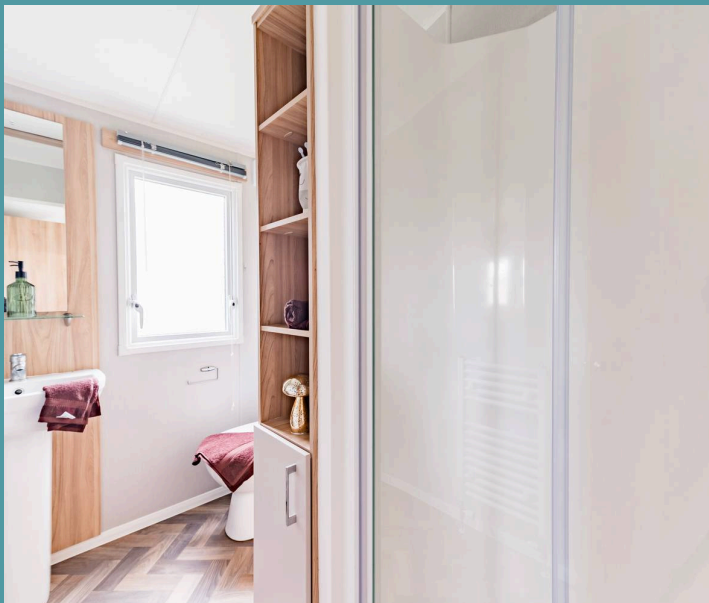
Broadland Sands Holiday Park, Corton

Holiday home

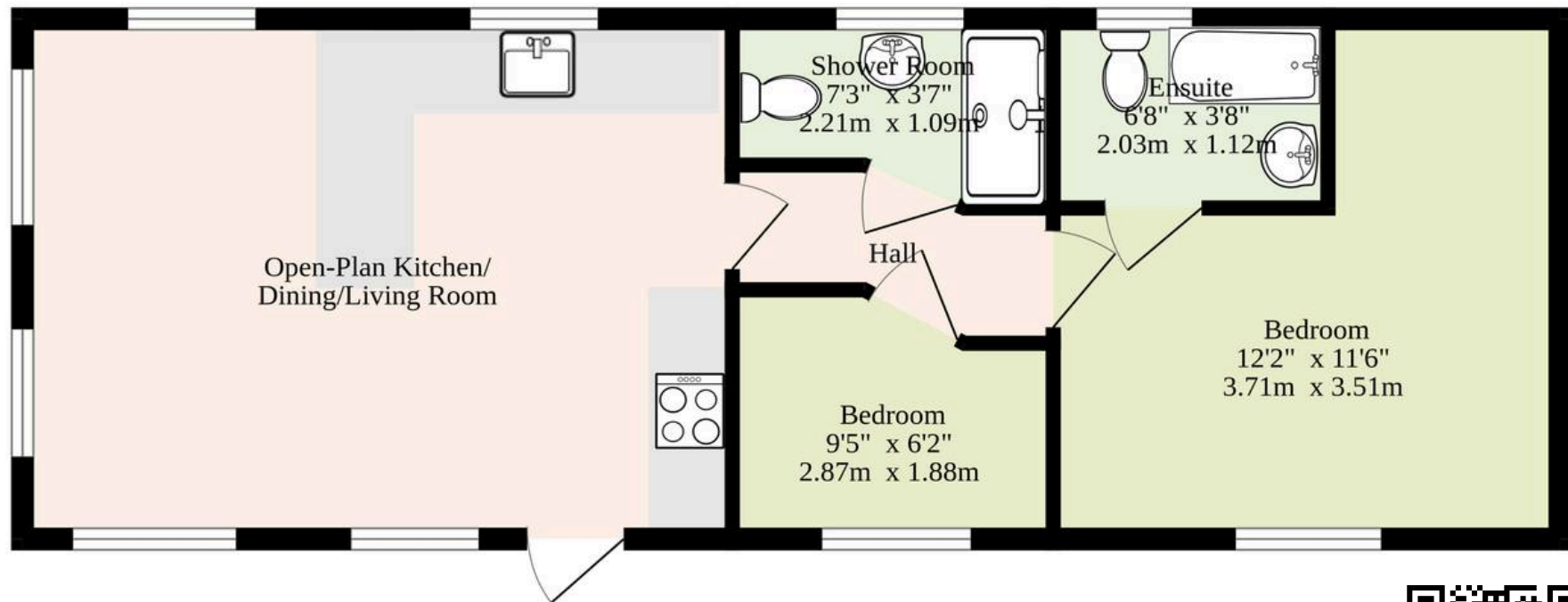
Moments away from the stunning coastline, this holiday home greets you with an open-plan kitchen/dining/living area that is designed for both relaxation and entertaining. Enhancing modern fixtures and fittings, including units and integrated appliances to be able to cook your favourite meals. With two well-appointed bedrooms, each thoughtfully designed with comfort and privacy in mind, while a separate family shower room caters to the needs of all occupants.

Agents Notes

- Holiday home on the Broadland Sands site in the coastal village of Corton
- Fantastic range of on-site facilities including an indoor pool, restaurant, adventure golf, mini mart shop and much more!
- A stones throw away from the coast, offering a beautiful setting for walks and summer days by the sea
- Open-plan kitchen/dining/living room for relaxation and entertaining, with modern fixtures and fittings
- Two bedrooms and a family shower room
- Close proximity to the village of Hopton, Gorleston-On-Sea, Great Yarmouth and Lowestoft, for days out with the family



479 sq.ft. (44.5 sq.m.) approx.



TOTAL FLOOR AREA : 479 sq.ft. (44.5 sq.m.) approx.

Whilst every attempt has been made to ensure the accuracy of the floorplan contained here, measurements of doors, windows, rooms and any other items are approximate and no responsibility is taken for any error, omission or mis-statement. This plan is for illustrative purposes only and should be used as such by any prospective purchaser. The services, systems and appliances shown have not been tested and no guarantee as to their operability or efficiency can be given.
Made with Metropix ©2025

