



Rusthall Avenue, Chiswick, W4 1BP

£579,950

WHITMAN & CO.

SALES · LETTINGS · COMMERCIAL

- Prestigious residential road
- Freehold ownership
- Fantastic transport links
- Private patio garden
- Two bedroom period conversion
- No onward chain

Tenure - Freehold
Local Authority - Ealing
Council Tax - Band E

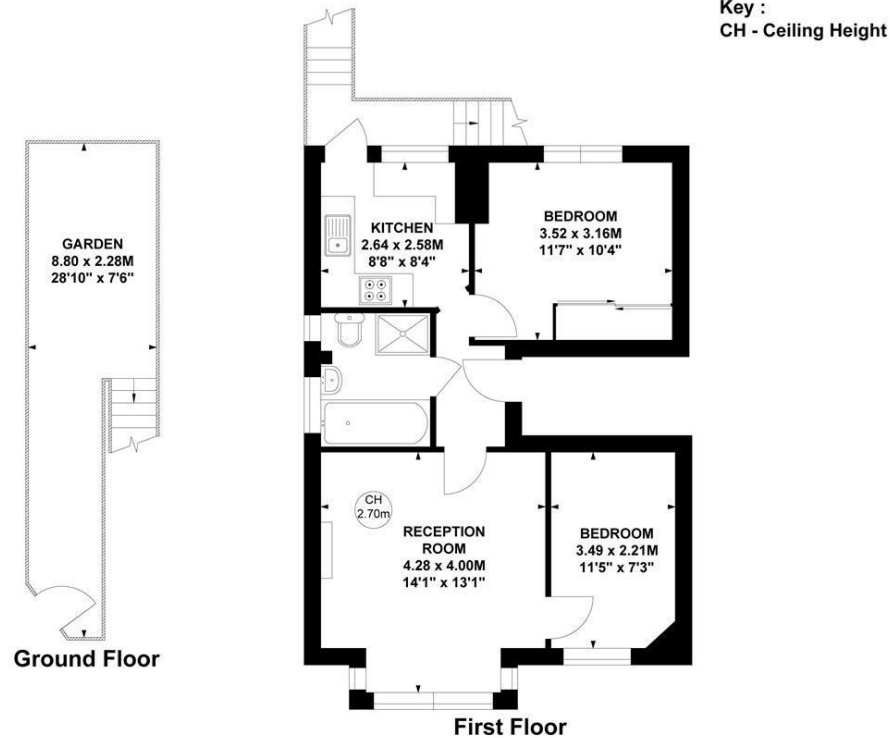
THE PROPERTY

A light and spacious two-bedroom period conversion flat with the added benefit of a private patio garden, ideally located on this prestigious residential road and offering close proximity to numerous amenities. Features include two double bedrooms, a 14-foot reception room, a luxury white bathroom suite, a fully integrated kitchen, and freehold ownership. Situated on this tree-lined residential street, the property offers close proximity to Turnham Green tube station and the extensive range of shops, bars, and restaurants on Chiswick High Road.



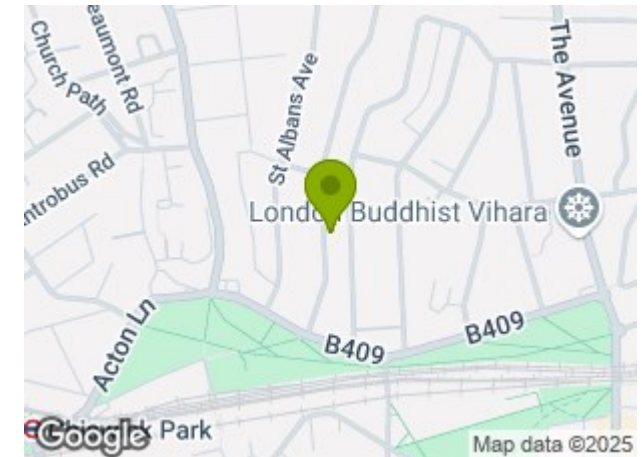
Rusthall Avenue, W4

Approximate Gross Internal Area
50.26 sq m / 541 sq ft



Not to scale, for guidance only and must not be relied upon as a statement of fact.
All measurements and areas are approximate only

SITUATION



5-7 Turnham Green Terrace, Chiswick, London, W4 1RG

Tel 020 8747 8800

E-mail sales@whitmanandco.com

Website www.whitmanandco.com

