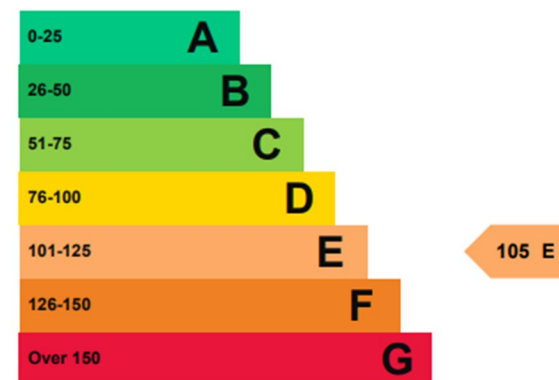




99 St. Pauls Road, London, N1 2NA

£674 Per Week



99 St. Pauls Road, London N1 2NA

Alwyne Estates are pleased to offer this versatile ground-floor retail/commercial space (Class E) with basement and rear access, ideally located on St Paul’s Road, just a short walk from Highbury & Islington station.

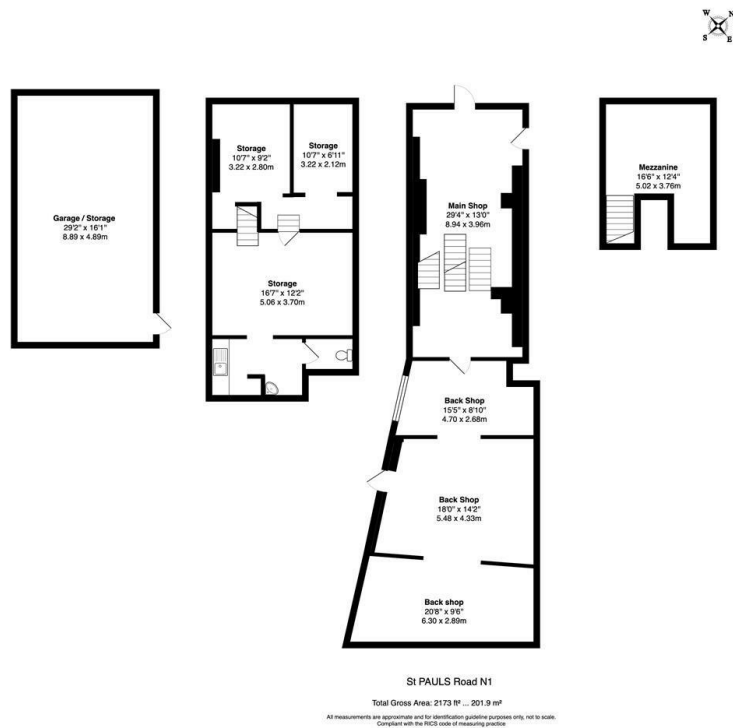
This well-positioned unit offers an excellent opportunity for a variety of businesses. The shop features a mezzanine-style layout extending to the rear boundary wall, with two side doors providing convenient rear access.

- Key Features:
- Prime Highbury & Islington location
 - Ground floor shop with basement storage
 - Mezzanine-style rear layout
 - Excellent transport links nearby

For more information or to arrange a viewing, please contact Alwyne Estates.



Council Tax Band: B



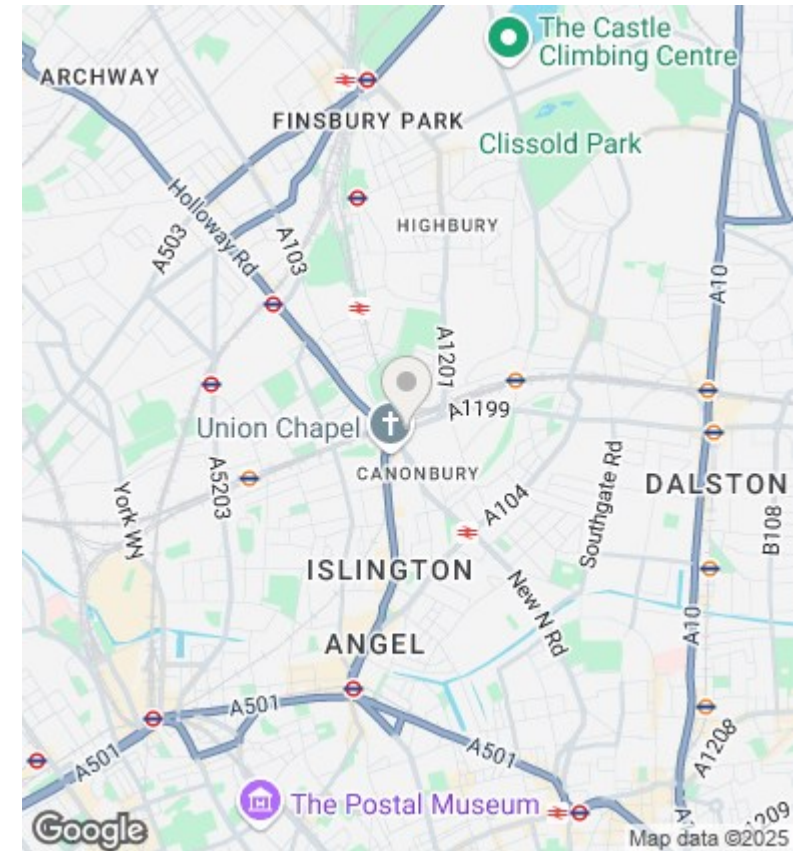
Directions

Viewings

Viewings by arrangement only. Call 02073593191 to make an appointment.

Council Tax Band

B



Energy Efficiency Rating		
	Current	Potential
Very energy efficient - lower running costs		
(92 plus) A		
(81-91) B		
(69-80) C		
(55-68) D		
(39-54) E		
(21-38) F		
(1-20) G		
Not energy efficient - higher running costs		
England & Wales	EU Directive 2002/91/EC	

Full description

