



Linen House, London, W4 2DY

An exceptionally spacious (678 sqft) one-bedroom apartment with secure allocated parking forming part of this landmark Victorian building in Chiswick, west London. Originally a commercial laundrette, the building was redeveloped into 19 luxury apartments in 2016. Situated on the second floor, with lift access, the accommodation comprises a 27'7" reception room with wood floors and an open plan kitchen area with fully integrated appliances, an 18'6" double bedroom, full bathroom with shower over bath, spacious entrance hall with storage, secure allocated parking space, Lutron lighting system, integrated speaker system, mechanical ventilation system and air conditioning. Linen House is conveniently located for Chiswick House and Grounds, The River and the extensive array of shops, cafes and restaurants on Chiswick High Road. Transport links include Turnham Green station, local bus routes and the A4/M4 for routes in and out of London. No onward chain.

- Exceptionally spacious one bed apartment
- Landmark Victorian warehouse
- High specification throughout
- Secure gated parking
- Well located for numerous amenities
- No onward chain

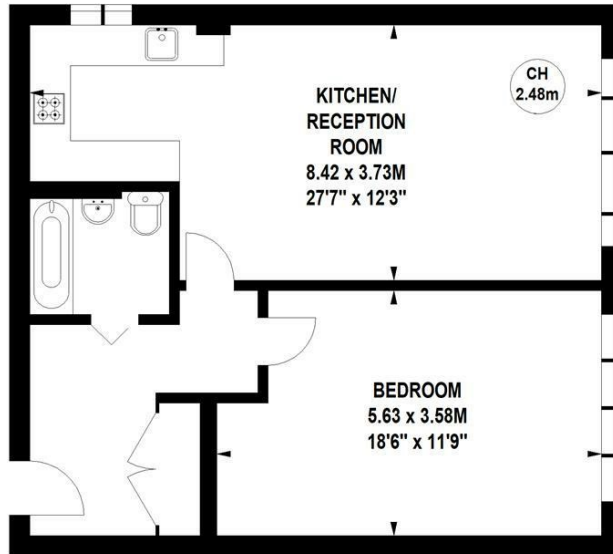
£450,000

Linen House, Hogarth Lane, W4

Approximate gross internal area
62.99 sq m / 678 sq ft



Key :
CH - Ceiling Height

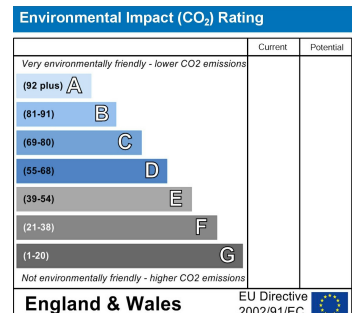
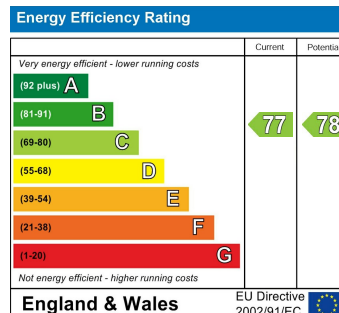


(Not shown in actual
location / orientation)

Second Floor

Not to scale, for guidance only and must not be relied upon as a statement of fact.
All measurements and areas are approximate only

Tenure - Leasehold
Lease length - 117 Years remaining
Ground rent - £525 pa
Service charge- £2198 pa
Local authority - Hounslow
Council tax - Band E



5-7 Turnham Green Terrace, Chiswick, London, W4 1RG

Tel 020 8747 8800

E-mail lettings@whitmanandco.com

Website www.whitmanandco.com

