

MORETONS

LONDON

2AA Morpeth Terrace, Morpeth Street, SW1P 1EW **£925,000**

1 Reception Room(s) | 2 Bedroom(s) | 2 Bathroom(s)



Description

A beautiful 2 bedroom flat in this sought after mansion block is now available. The property has been recently refurbished to high standards and with just under 900 square foot of living space, the flat comprises two double bedrooms, two bathrooms, kitchen, a spacious dining/ reception room, high ceilings and ample storage. Just minutes away from Victoria station the flat benefits from excellent transport links across London. Tenure: Share of Freehold

WESTMINSTER | PIMLICO | BELGRAVIA | ST JAMES'S | CHELSEA | FITZROVIA
WESTMINSTER | PIMLICO | BELGRAVIA | ST JAMES'S | CHELSEA | FITZROVIA



www.moretons.co.uk

Moretons Property Services Limited is a member of The Crabtree Property Group
72 Rochester Row | London SW1P 1JU | Registered VAT No: 626 187 234



MORETONS

LONDON

2AA Morpeth Terrace, Morpeth Street, SW1P 1EW



Moretons Disclaimer

1. Particulars do not constitute part of an offer or contract. The particulars; including text, photographs and plans are for the guidance only of prospective purchasers and must not be relied upon as statement of fact.
2. The above measurements are intended to be as accurate as possible reflecting fairly the proportions of the rooms. They are prepared using sonic measure. If any measurements are critical to you we would be delighted to double-check.
3. At the time of taking details we understand from the vendor that any kitchen, bathroom, central heating or other equipment included in the detail is in working order but we would point out that we have not had any opportunity to check these items.
4. Prior to appointment, Moretons strongly recommend that you discuss any particular points, which are likely to affect your interest in the property, with a member of staff who has seen the property in order that you do make a wasted journey.
5. The mention of kitchen appliances and/or dishwasher, washing machine, a carpet, curtain and light fitting does not necessarily mean they are included in the sale. The facts must be checked when an offer is made. January 2016.

WESTMINSTER | PIMLICO | BELGRAVIA | ST JAMES'S | CHELSEA | FITZROVIA



www.moretons.co.uk

Moretons Property Services Limited is a member of The Crabtree Property Group
72 Rochester Row | London SW1P 1JU | Registered VAT No: 626 187 234



MORETONS

LONDON

2AA Morpeth Terrace, Morpeth Street, SW1P 1EW



WESTMINSTER | PIMLICO | BELGRAVIA | ST JAMES'S | CHELSEA | FITZROVIA



www.moretons.co.uk

Moretons Property Services Limited is a member of The Crabtree Property Group
72 Rochester Row | London SW1P 1JU | Registered VAT No: 626 187 234

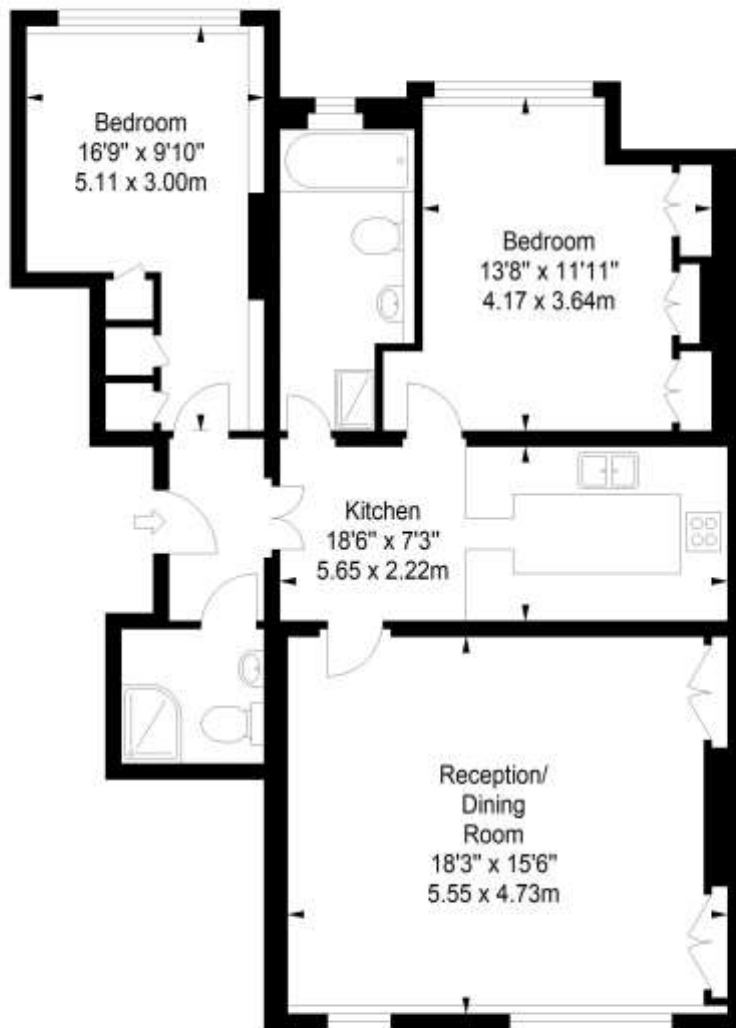


MORETONS

LONDON

Morpeth Terrace

Approximate Gross Internal Area
899 sq ft / 83.55 sq m



Ground Floor

ILLUSTRATION FOR IDENTIFICATION PURPOSES ONLY

ALL MEASUREMENTS ARE MAXIMUM, AND INCLUDE WINDOW BAYS AND WARDROBES WHERE APPLICABLE
THIS PLAN MUST NOT BE REPRODUCED BY ANY OTHER PERSON WITHOUT PERMISSION

WESTMINSTER | PIMLICO | BELGRAVIA | ST JAMES'S | CHELSEA | FITZROVIA



www.moretons.co.uk

Moretons Property Services Limited is a member of The Crabtree Property Group
72 Rochester Row | London SW1P 1JU | Registered VAT No: 626 187 234



MORETONS

LONDON

Score	Energy rating	Current	Potential
92+	A		
81-91	B		
69-80	C	74 C	78 C
55-68	D		
39-54	E		
21-38	F		
1-20	G		

WESTMINSTER | PIMLICO | BELGRAVIA | ST JAMES'S | CHELSEA | FITZROVIA



www.moretons.co.uk

Moretons Property Services Limited is a member of The Crabtree Property Group
72 Rochester Row | London SW1P 1JU | Registered VAT No: 626 187 234

