



Norfolk House Sheringham Road, West Beckham

Guide Price £750,000

Norfolk House Sheringham Road

West Beckham, Holt

Welcome to this spacious and versatile property that seamlessly blends functionality with luxury living. The ground floor welcomes you with an inviting entrance hall and the added convenience of a cloakroom. A split-level entertaining space opens up, offering room for both furniture and a dining area, with easy access to the patio via French doors. The generously sized kitchen boasts modern features and a skylight, making it an inviting space to prepare meals. Three of the five bedrooms are located on this floor, with the third bedroom featuring an ensuite. Descending to the lower floor, you'll discover an additional kitchen, a utility room and a luxurious cinema room for your entertainment. The remaining two bedrooms on this level are both masters, each with its ensuite. The property's rear boasts a generous plot that can be transformed into your dream garden. Ample off-road parking on the gated gravel driveway ensures both security and convenience.

Tenure: Freehold

EPC Energy Efficiency Rating: C

EPC Environmental Impact Rating: D





Norfolk House Sheringham Road

West Beckham, Holt

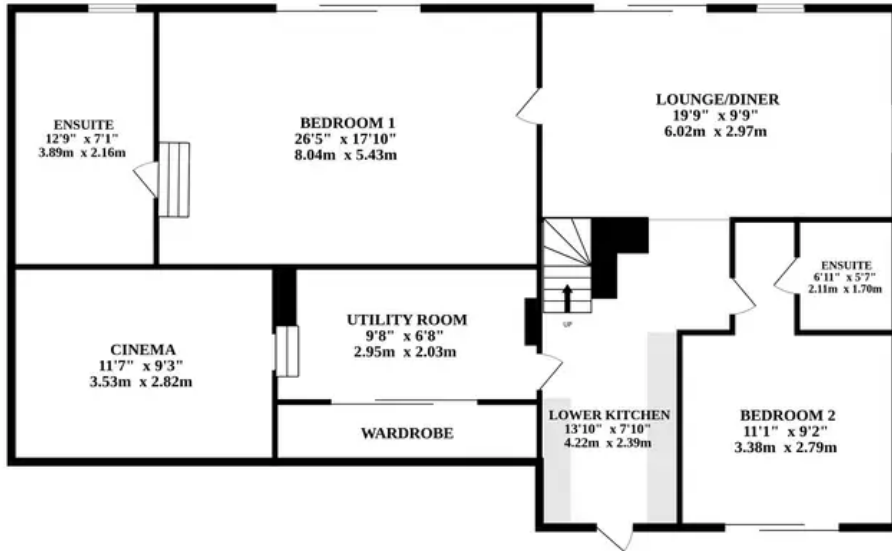
Enjoy this spacious and versatile property that seamlessly blends functionality with luxury living. The ground floor welcomes you with an inviting entrance hall and the added convenience of a cloakroom. A split-level entertaining space opens up, offering room for both furniture and a dining area, with easy access to the patio via French doors. The generously sized kitchen boasts modern features and a skylight, making it an inviting space to prepare meals. Three of the five bedrooms are located on this floor, with the third bedroom featuring an ensuite. Descending to the lower floor, you'll discover an additional kitchen, a utility room and a luxurious cinema room for your entertainment. The remaining two bedrooms on this level are both masters, each with its ensuite. The property's rear boasts a generous plot that can be transformed into your dream garden. Ample off-road parking on the gated gravel driveway ensures both security and convenience.

LOCATION

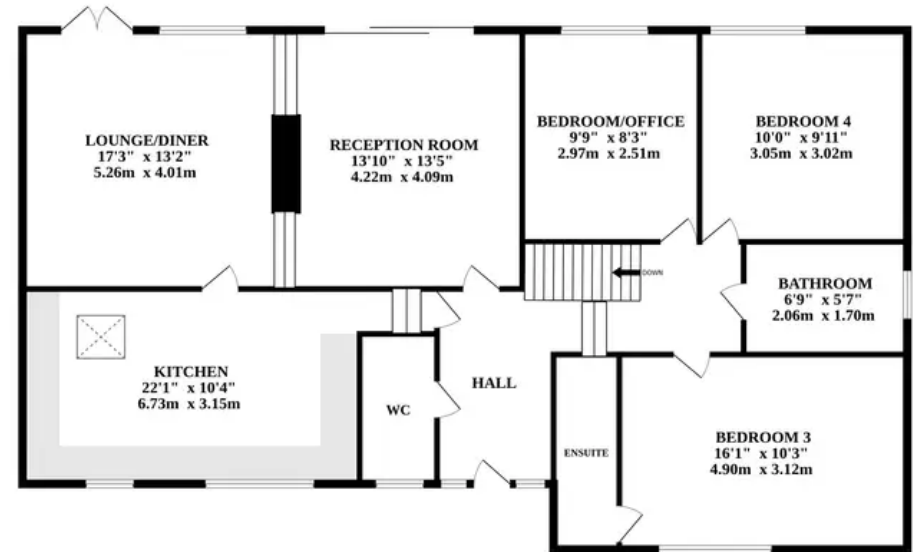
Nestled in the picturesque village of West Beckham, offers a prime location just a short drive away from the charming Sheringham seafront, where you can enjoy a wonderful day out or a relaxing evening stroll. Golf enthusiasts will appreciate the proximity to Sheringham Golf Club. Additionally, providing easy access to Holt, a sought-after destination with abundant amenities to enjoy. You'll find Byfords, The Kings Head pub serving excellent food, delightful tea rooms and quaint shops to explore. This location is also ideal



LOWER GROUND



GROUND FLOOR



Whilst every attempt has been made to ensure the accuracy of the floorplan contained here, measurements of doors, windows, rooms and any other items are approximate and no responsibility is taken for any error, omission or mis-statement. This plan is for illustrative purposes only and should be used as such by any prospective purchaser. The services, systems and appliances shown have not been tested and no guarantee as to their operability or efficiency can be given.
 Made with Metropix ©2023

