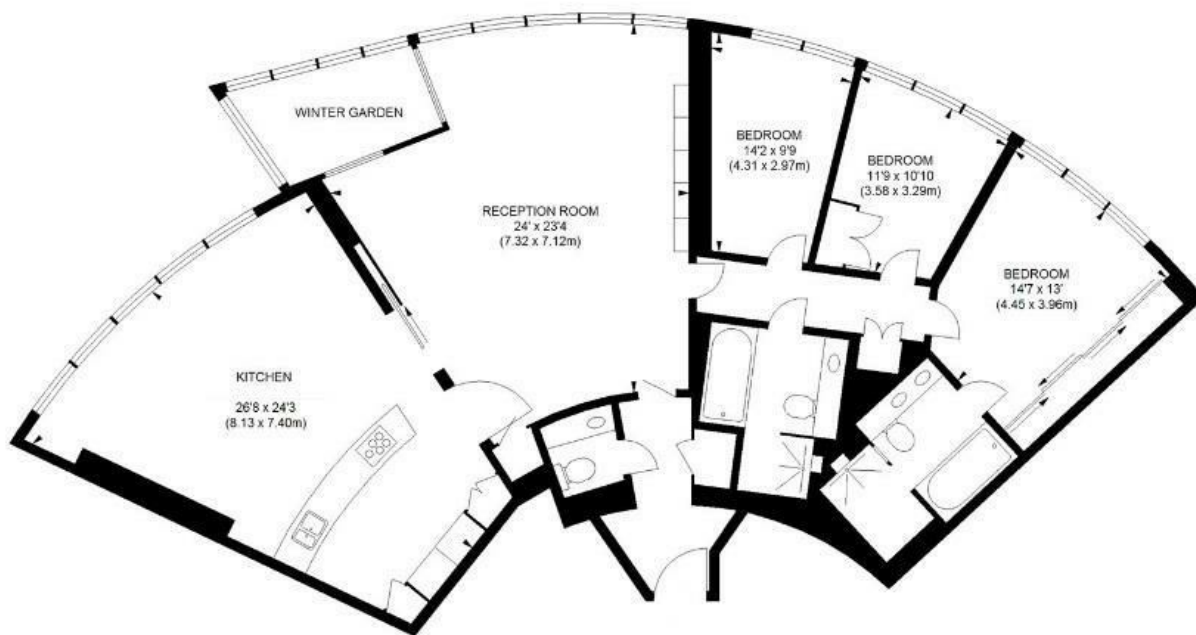




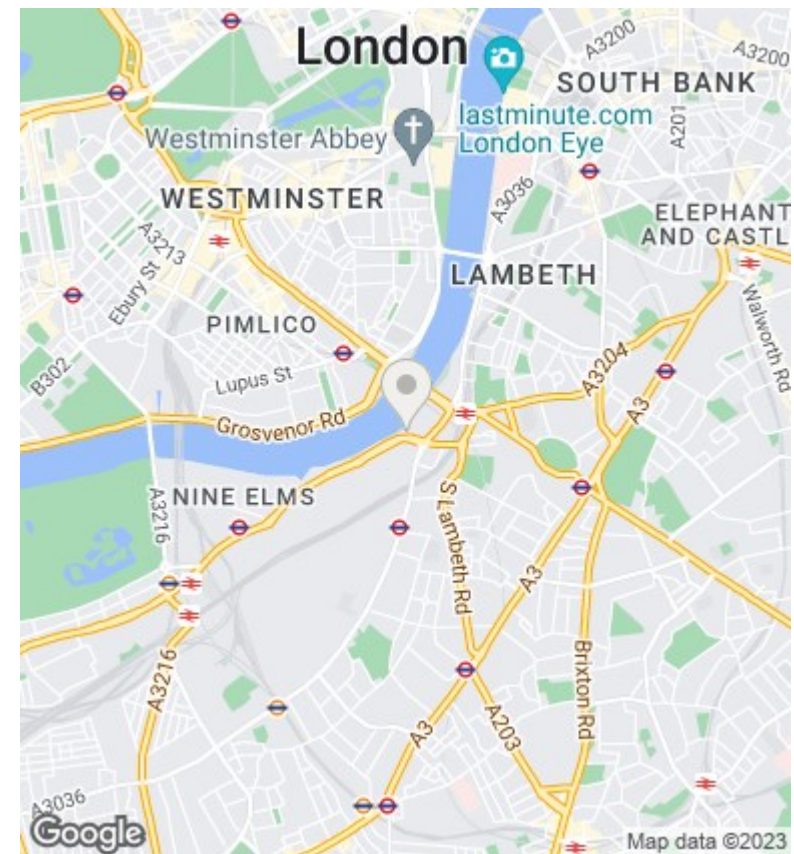
## The Tower, St George Wharf SW8 2BW

Offers In The Region Of £3,200,000

- 24 Hour concierge
- Business lounge
- Under floor heating
- Secure Parking
- Gym/spa
- Cinema
- Air cooling
- Swimming pool overlooking river
- Meeting room / dining room
- Electric blinds



APPROX. GROSS INTERNAL FLOOR AREA 1859 SQ FT / 172.70 SQ M



### Viewings

Viewings by arrangement only.  
Call 02077225022 to make an appointment.

### Council Tax Band

### EPC Rating:

Energy Efficiency Rating		
	Current	Potential
<i>Very energy efficient - lower running costs</i>		
(92 plus) <b>A</b>		
(81-91) <b>B</b>		
(69-80) <b>C</b>		
(55-68) <b>D</b>		
(39-54) <b>E</b>		
(21-38) <b>F</b>		
(1-20) <b>G</b>		
<i>Not energy efficient - higher running costs</i>		
<b>England &amp; Wales</b>	EU Directive 2002/91/EC	