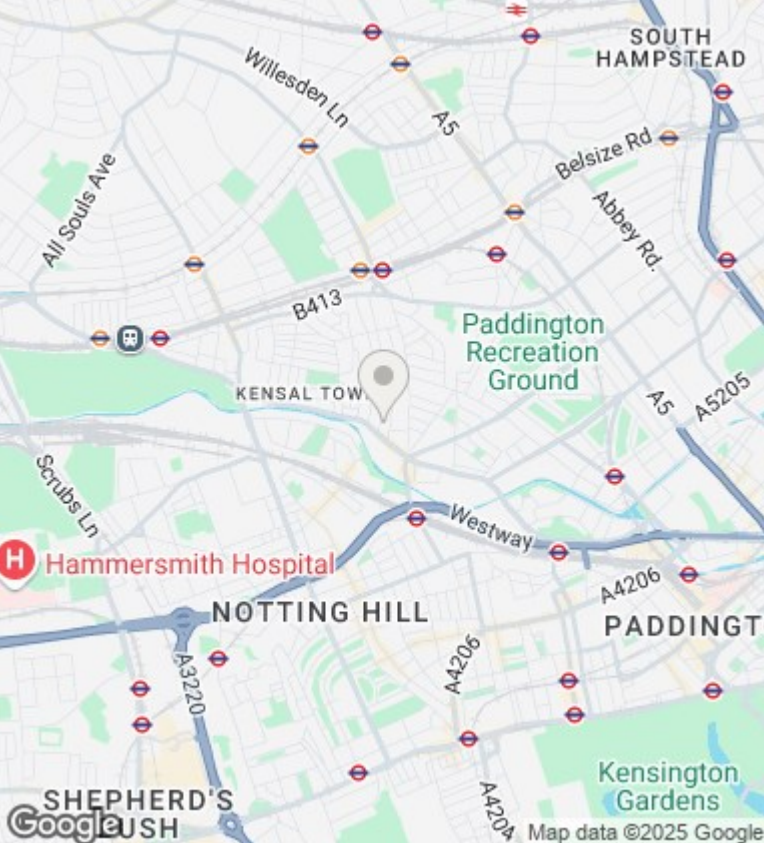
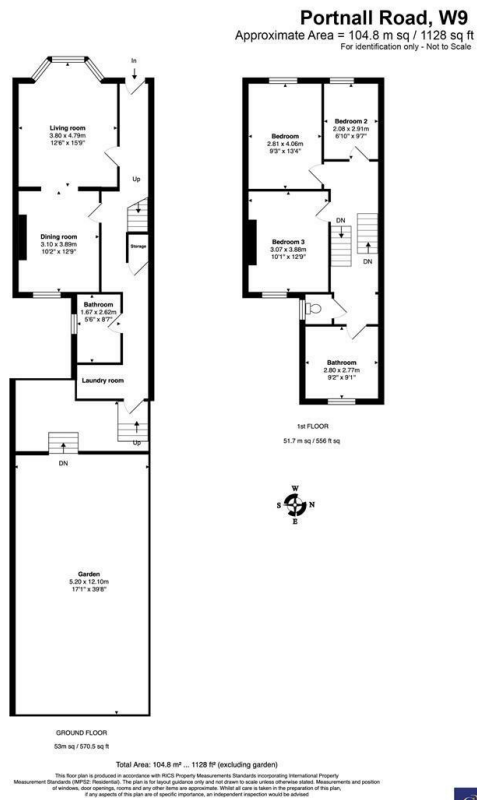




## Portnall Road, London

Asking price £969,950

- 1,128 sq. ft.
- Private Garden
- PERIOD FEATURES – High Ceilings
- Guest WC
- 3 BEDROOMS
- SHARE OF FREEHOLD
- Utility room
- Completely refurbished
- NO CHAIN
- 2 Bathrooms



**Directions**

**Viewings**

Viewings by arrangement only. Call +44 20 3300 3550 to make an appointment.

**Council Tax Band**

E

**EPC Rating:**

**Energy Efficiency Rating**

	Current	Potential
<i>Very energy efficient - lower running costs</i>		
(92 plus) <b>A</b>		
(81-91) <b>B</b>		
(69-80) <b>C</b>		
(55-68) <b>D</b>		
(39-54) <b>E</b>		
(21-38) <b>F</b>		
(1-20) <b>G</b>		
<i>Not energy efficient - higher running costs</i>		

**England & Wales** EU Directive 2002/91/EC