



Milestone and Collis are pleased to offer this spacious one double bedroom ground floor apartment in an attractive, purpose-built residential development with direct access to shared communal grounds/gardens.

This one double bedroom apartment benefits from storage cupboards, laminate flooring, and double glazing to dual aspects.

This property is ideally located directly opposite the beautiful and historic Bushy Park and within easy reach to Teddington mainline train station via footpath.

Early viewing recommend to avoid disappointment

No onward chain.

Asking Price £375,000 | Apartment | Share of Freehold

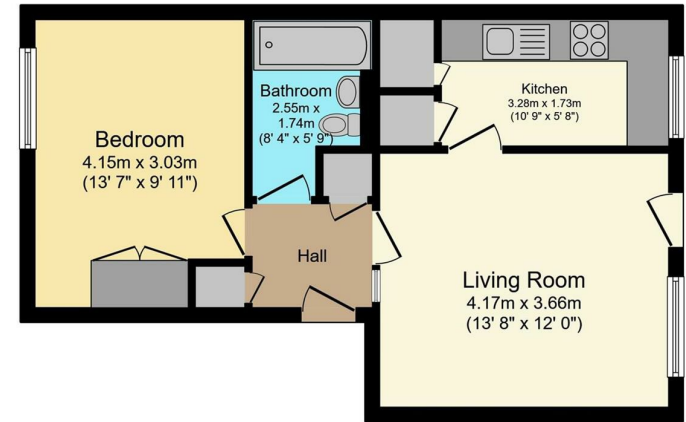
Milestone  
Collis &

**Harrowdene Gardens, TW11  
0DP**

Milestone-collis.com

020 8892 1313

Sales@milestone-collis.com



Total floor area 43.9 sq.m. (473 sq.ft.) approx  
 This floor plan is for illustrative purposes only. It is not drawn to scale. Any measurements, floor areas (including any total floor area), openings and orientation are approximate. No details are guaranteed, they cannot be relied upon for any purpose and they do not form part of any agreement. No liability is taken for any error, omission or misstatement. A party must rely upon its own inspection(s).  
 Powered by www.focalagent.com



### Council Tax: Band

Milestone & Collis Ltd endeavour to provide particulars that are both accurate and reliable but they are not guaranteed and do not form part of any offer or contract. Any measurements / dimensions should not be relied upon and should always be checked by a third party. No tests have been carried out on any mentioned electrical, plumbing, heating / hot water systems or appliances and no guarantees or warranties are given whatsoever.

Energy Efficiency Rating		
	Current	Potential
Very energy efficient - lower running costs		
(92 plus) <b>A</b>		
(81-91) <b>B</b>		
(69-80) <b>C</b>		
(55-68) <b>D</b>		
(39-54) <b>E</b>		
(21-38) <b>F</b>		
(1-20) <b>G</b>		
Not energy efficient - higher running costs		
<b>England &amp; Wales</b>	65	75
EU Directive 2002/91/EC		

Environmental Impact (CO <sub>2</sub> ) Rating		
	Current	Potential
Very environmentally friendly - lower CO <sub>2</sub> emissions		
(92 plus) <b>A</b>		
(81-91) <b>B</b>		
(69-80) <b>C</b>		
(55-68) <b>D</b>		
(39-54) <b>E</b>		
(21-38) <b>F</b>		
(1-20) <b>G</b>		
Not environmentally friendly - higher CO <sub>2</sub> emissions		
<b>England &amp; Wales</b>	59	71
EU Directive 2002/91/EC		