

17 Cardington Court, Acle

£165,000 Leasehold

Nestled within a central location, this charming ground floor apartment presents an opportunity for those seeking a family home within easy reach of transport links. Boasting a thoughtfully designed layout and an array of desirable features, this two-bedroom property offers comfortable and convenient living spaces.

Location

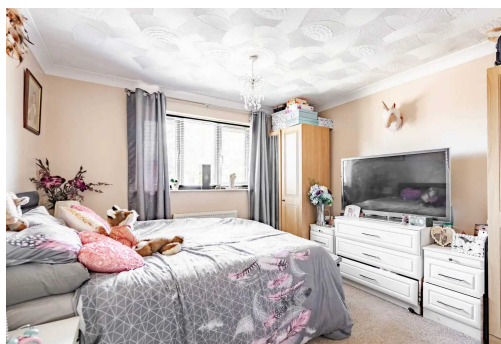
This apartment is nestled in a serene and picturesque village setting. Acle is known for its charming countryside atmosphere while still providing convenient access to essential amenities. This address places you within a friendly, close-knit community, just a short walk from local shops, cafes, and the historic Acle Bridge over the River Bure. The village is well-connected, with easy access to the A47, making commutes to Norwich or Great Yarmouth seamless. Additionally, Acle offers excellent outdoor recreational opportunities, including beautiful walking and cycling routes through the Norfolk Broads National Park. This combination of tranquillity, convenience, and natural beauty makes Cardington Court a desirable location for those seeking a balanced and vibrant lifestyle.



Agents Notes

We understand this property is being sold leasehold, connected to mains water, electricity, drainage and gas.

Council Tax Band - A



Cardington Court

Upon entering this residence, you are welcomed into the passage way that leads you towards the heart of the home. To the right, you will find two well-proportioned bedrooms, each providing a peaceful retreat. Tastefully appointed and bathed in natural light, these bedrooms offer a sanctuary.

To the left of the passage awaits a spacious lounge that seamlessly transitions into the well-equipped kitchen featuring a built in hob/cooker, creating a cohesive living area that encourages socialising and entertaining. The open design of this living space fosters a warm and inviting atmosphere for residents and guests alike.

Completing the interior layout of this property is a modern shower room, providing both style and functionality for every-day convenience. With gas-fired central heating ensuring warmth and comfort during the cooler months, this apartment caters to the needs of contemporary living, promising a harmonious blend of style and practicality.

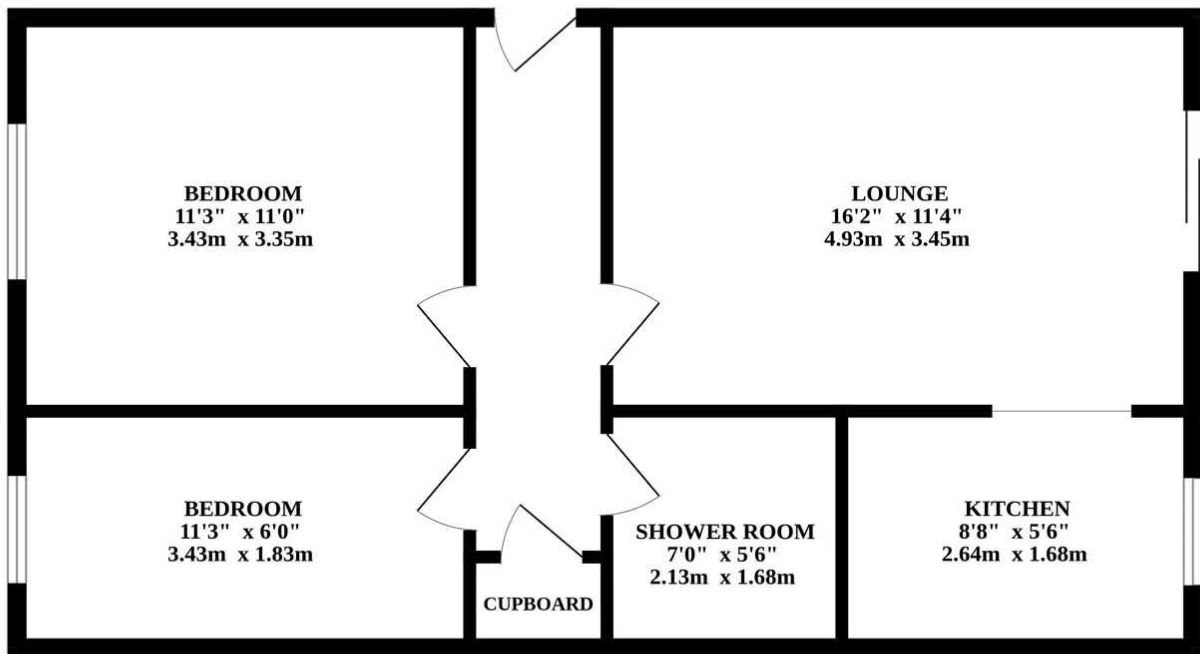
Externally, leading out through patio doors, you'll find the rear garden with a decked seating area, offering an outdoor space for relaxation. Additionally, an allocated parking space provides convenience for residents with vehicles, alleviating any concerns related to parking in this bustling location.

For added security and convenience, the apartment is equipped with an internal safety entrance system, giving you peace of mind knowing that your home is safeguarded.

With its central position and proximity to various transportation options, this property presents an ideal opportunity for those seeking a home that combines urban convenience with suburban comfort. Offering a blend of functionality and potential, this two-bedroom apartment is ready to accommodate a new chapter in its residents' lives, promising a lifestyle of ease and comfort in a sought-after location.



GROUND FLOOR



Whilst every attempt has been made to ensure the accuracy of the floorplan contained here, measurements of doors, windows, rooms and any other items are approximate and no responsibility is taken for any error, omission or mis-statement. This plan is for illustrative purposes only and should be used as such by any prospective purchaser. The services, systems and appliances shown have not been tested and no guarantee as to their operability or efficiency can be given.
Made with Metropix ©2024