



148 Chestnut Avenue, Spixworth
Offers In Excess Of: £300,000

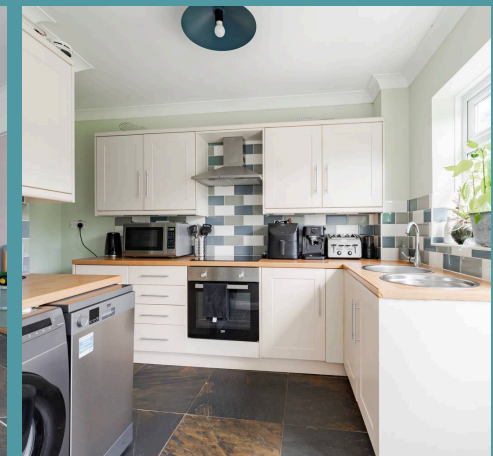
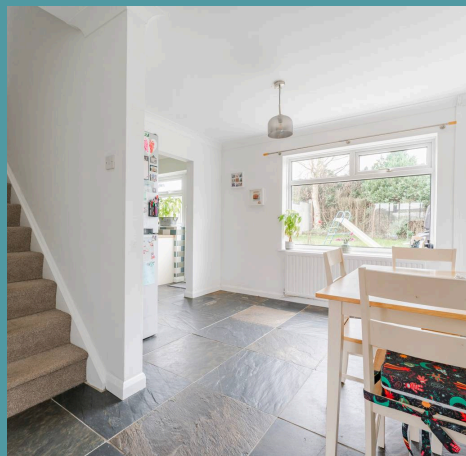
148 Chestnut Avenue

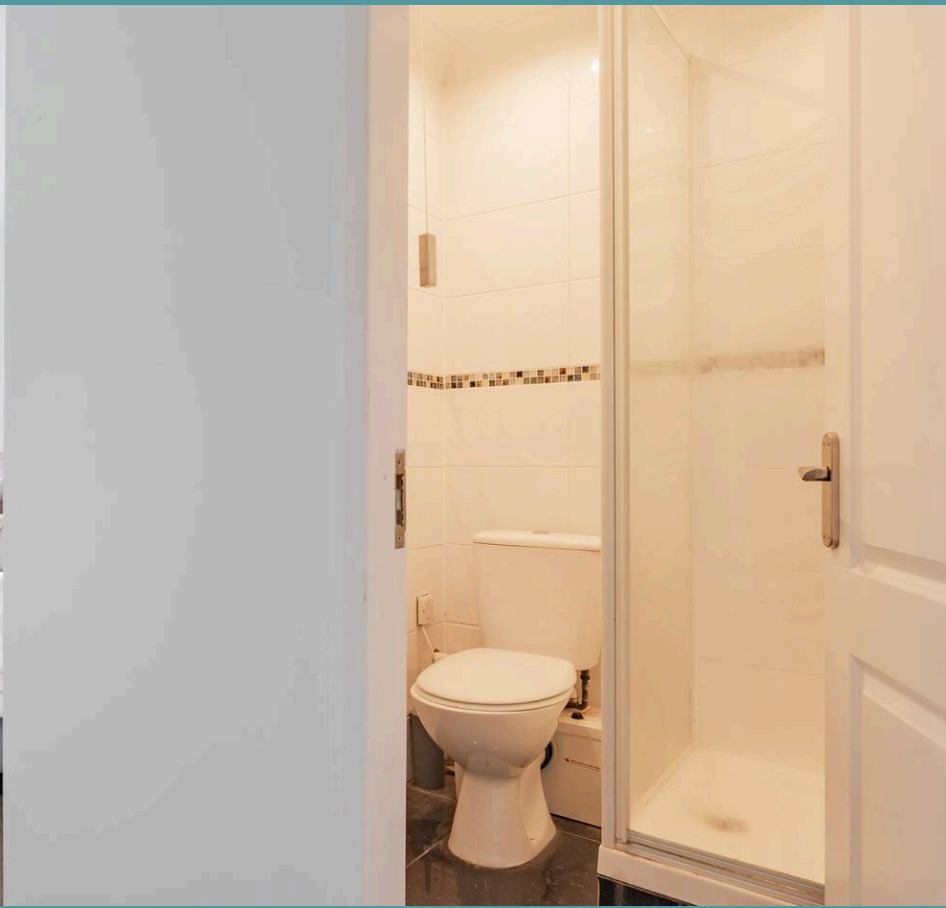
Spixworth, Norwich

Positioned in a cul-de-sac in the village of Spixworth, this spacious detached house is perfect for family living. The ground floor boasts a bright living room with a double doorway to the dining area, leading to a modern open-plan kitchen. Upstairs, you'll find three well-sized bedrooms, including a master with an ensuite shower room and a well-appointed family bathroom. Ideally located just a short drive from Norwich city center, the property backs onto Woodland View Junior School's playing field, providing scenic views and a sense of openness. Outside, enjoy ample parking and a beautifully landscaped rear garden, ideal for relaxation and outdoor activities.

The Location

Located at Chestnut Avenue in the desirable village of Spixworth, NR10, this property enjoys a convenient and family-friendly setting. Just a short 5-mile drive from Norwich city centre, it offers easy access to a wide range of shopping, dining, and entertainment options. Within the village itself, residents will find essentials close at hand, with a Tesco Express less than a mile away and the local pharmacy and medical centre nearby. For families, the property is ideally situated near Woodland View Junior School, which is within walking distance. Additionally, the surrounding area provides excellent transport links and easy access to the Norfolk Broads, located just 7 miles away, perfect for weekend escapes and outdoor adventures.





148 Chestnut Avenue

Spixworth, Norwich

Chestnut Avenue

Nestled in a quiet cul-de-sac, this impressive detached house offers ample space and versatility for family living. The ground floor features a bright and spacious living room with a double doorway opening to the dining area, creating a perfect space for gatherings. The dining room flows seamlessly into the modern, open-plan kitchen, ideal for family meals and entertaining. Additionally, a ground floor room provides flexibility as a bedroom or home office.



Upstairs, the home includes three well-proportioned bedrooms, offering plenty of room for a growing family. The master bedroom boasts its own ensuite shower room, adding an element of privacy and convenience. A spacious family bathroom, equipped with both a bath and separate shower, caters to the needs of the household with functionality.



148 Chestnut Avenue

Spixworth, Norwich

Set on a generous plot, this property backs onto Woodland View Junior School's playing field, providing scenic views and a sense of openness.

The front driveway offers ample parking for multiple vehicles, while the landscaped rear garden features a lawn, decorative flower beds and a gravel area, creating a welcoming outdoor space perfect for relaxation and play.

Agents Note

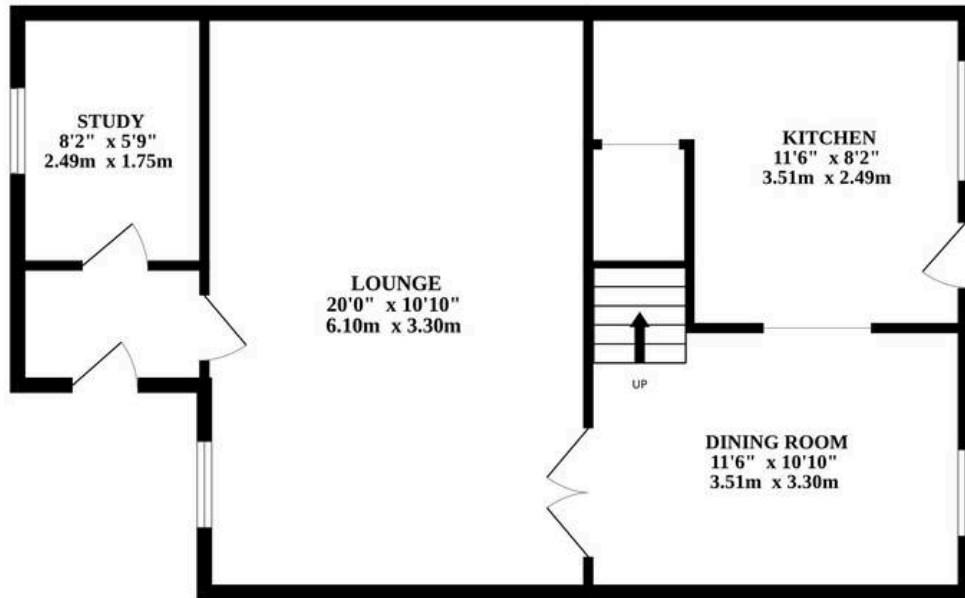
Sold Freehold

Connected to all mains services.

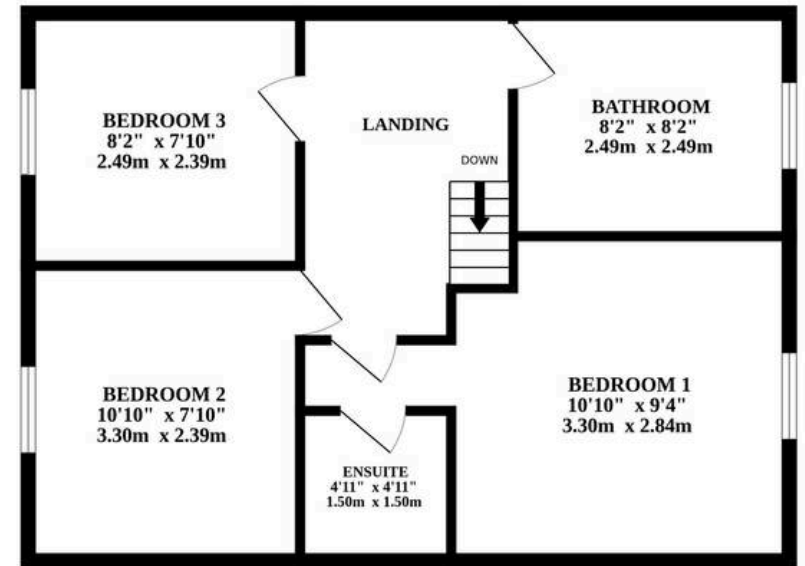
Council Tax - C



GROUND FLOOR



1ST FLOOR



Whilst every attempt has been made to ensure the accuracy of the floorplan contained here, measurements of doors, windows, rooms and any other items are approximate and no responsibility is taken for any error, omission or mis-statement. This plan is for illustrative purposes only and should be used as such by any prospective purchaser. The services, systems and appliances shown have not been tested and no guarantee as to their operability or efficiency can be given.
Made with Metropix ©2024

