

Glebe Street, London, W4 2BD

Guide Price £1,950,000

WHITMAN & CO.

SALES · LETTINGS · COMMERCIAL

- SOLD
- Four beds/three baths
- Luxurious primary suite
- Exceptional fully extended period property

- Basement conversion with 2.75m high ceilings
- Stunning reception space
- Sought after location

Tenure - Freehold
Local Authority - Hounslow
Council Tax - Band F

THE PROPERTY

SOLD - An incredibly rare opportunity to purchase this exceptional period property with stunning basement extension located in the sought-after Glebe Estate moments from Chiswick High Road's shops, cafes and restaurants. The house has been meticulously refurbished and extended by the current owner to offer an excellent balance of living and entertaining space with the accommodation comprising a 22'7" south-facing reception room with bay window that leads into a full-width kitchen/dining area overlooking a lovely 33' landscaped garden with open aspect, first-floor primary bedroom suite including full-width bedroom with fitted wardrobes and large bathroom with freestanding bath and walk-in shower, two further bedrooms and luxury bathroom with separate shower on the upper floors. The basement has been converted to provide 2.75m high ceilings and includes a spacious double bedroom/gym with fitted wardrobes and bay window into the lightwell, shower room, spacious utility room and additional storage. Located within a short walk of Chiswick High Road's shops, cafes and restaurants, and The River. Transport links include Turnham Green station, local bus routes and the A4/M4 for routes in and out of London.

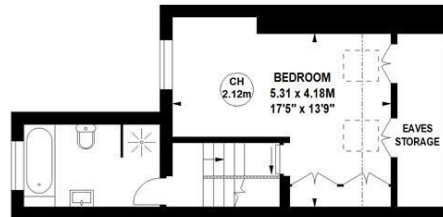
Glebe Street, W4

Approximate gross internal area

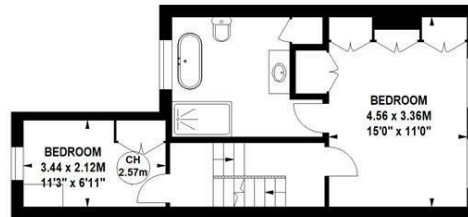
165.64 sq m / 1783 sq ft
(Including Eaves Storage)

Eaves Storage
4.83 sq m / 52 sq ft

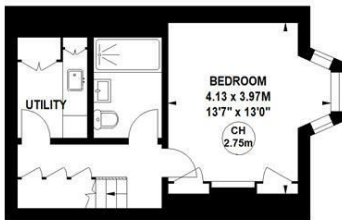
Key :
CH - Ceiling Height



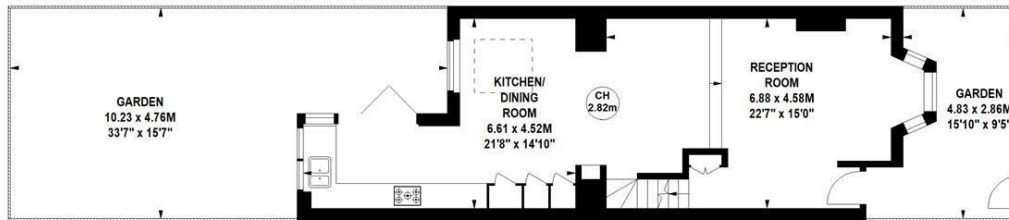
Second Floor



First Floor



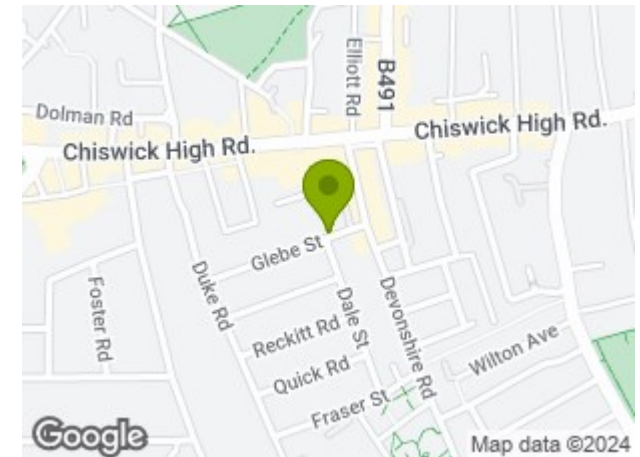
Lower Ground Floor



Ground Floor

Not to scale, for guidance only and must not be relied upon as a statement of fact.
All measurements and areas are approximate only

SITUATION



5-7 Turnham Green Terrace, Chiswick, London, W4 1RG

Tel 020 8747 8800

E-mail sales@whitmanandco.com

Website www.whitmanandco.com



MISREPRESENTATION ACT 1967

Whitman & Co. for themselves and for the vendors give notice that these particulars do not constitute any part of, an offer of contract. All statements contained in these particulars are made without responsibility on the part of Whitman & Co. or the vendor. None of the statements contained in these particulars is to be relied upon as statements or representations of facts. Any intending purchaser must satisfy himself by inspection or otherwise as to the correctness of each of the statements contained in these particulars. The vendor does not make or give, and neither Whitman & Co. or any person in their employment has any authority to make or give, any representation or warranty whatever in relation to the property.