

Location:

Key points:

Do Better:

Aston Rowe

Acton
lettings@astonrowe.co.uk

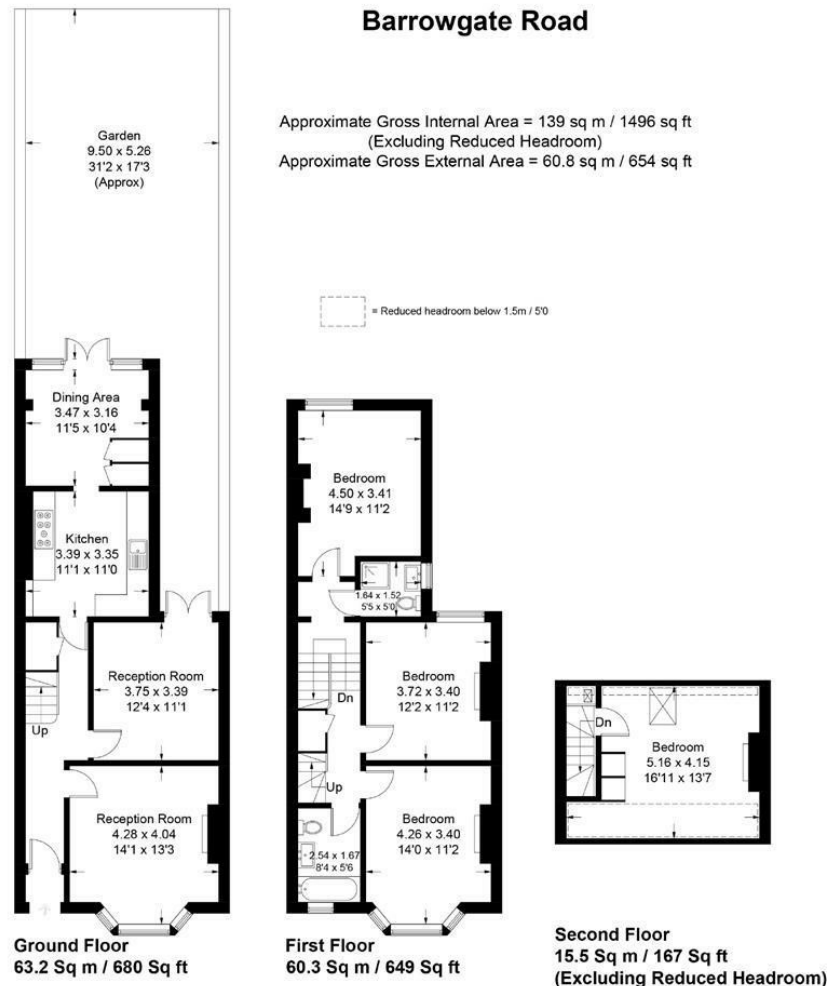
57-59 Churchfield Road,
Acton, London, W3 6AY

020 8992 3600



Barrowgate Road

Approximate Gross Internal Area = 139 sq m / 1496 sq ft
(Excluding Reduced Headroom)
Approximate Gross External Area = 60.8 sq m / 654 sq ft



To Let: £4,000 Per Month

Barrowgate Road, London W4 4QX

Energy Efficiency Rating		Current	Potential
Very energy efficient - lower running costs			
(92 plus)	A		
(81-91)	B		
(69-80)	C		
(55-68)	D		
(39-54)	E		
(21-38)	F		
(1-20)	G		
Not energy efficient - higher running costs			
England & Wales		EU Directive 2002/91/EC	

Environmental Impact (CO ₂) Rating		Current	Potential
Very environmentally friendly - lower CO ₂ emissions			
(92 plus)	A		
(81-91)	B		
(69-80)	C		
(55-68)	D		
(39-54)	E		
(21-38)	F		
(1-20)	G		
Not environmentally friendly - higher CO ₂ emissions			
England & Wales		EU Directive 2002/91/EC	

- 2 Reception Rooms
- 4 Bedrooms
- 2 Bathrooms

The current tenant says:

Aston Rowe are delighted to offer this 4/5 bedroom house located on this popular residential road in Chiswick.

The accommodation has been recently refurbished and comprises, 2 separate reception rooms both featuring wooden floors, large kitchen / diner which has been recently re-fitted offering appliances include double fridge freezer and dishwasher. 4 good sized double bedrooms, modern shower room, 2nd bathroom with shower over bath and private rear garden.

Ideally located on popular tree lined road with great access to the High Road, Gunnersbury / Chiswick Park stations and major road links A4 / M4.

What's better:

