



Pakefield Caravan Park, Arbor Lane  
£120,000

# Pakefield Caravan Park

Arbor Lane, Lowestoft

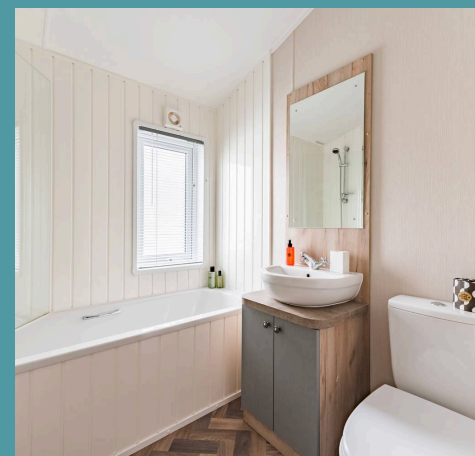
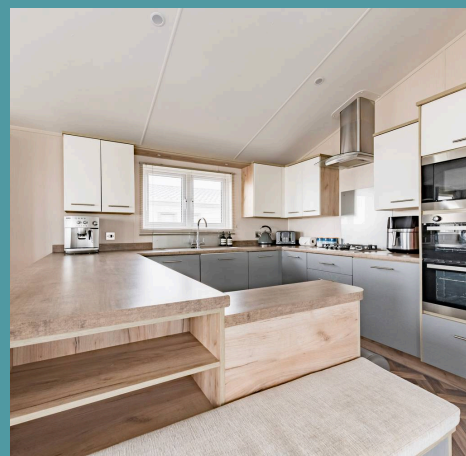
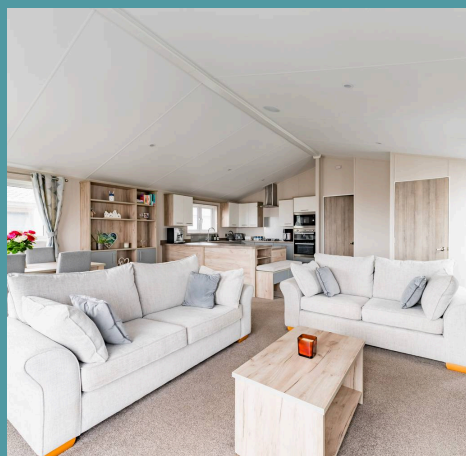
Savour the quintessential seaside lifestyle in this luxury holiday home on Pakefield Caravan Park. Showcasing high-quality fixtures and fittings in the open-plan kitchen/dining/living area, two double bedrooms, the private en-suite, dressing room and family bathroom, all promising comfort and style. With the addition of a large wrap-around decked terrace, perfect for those summer months. Don't miss the chance to enjoy all this holiday home has to offer, with fantastic on-site facilities available.

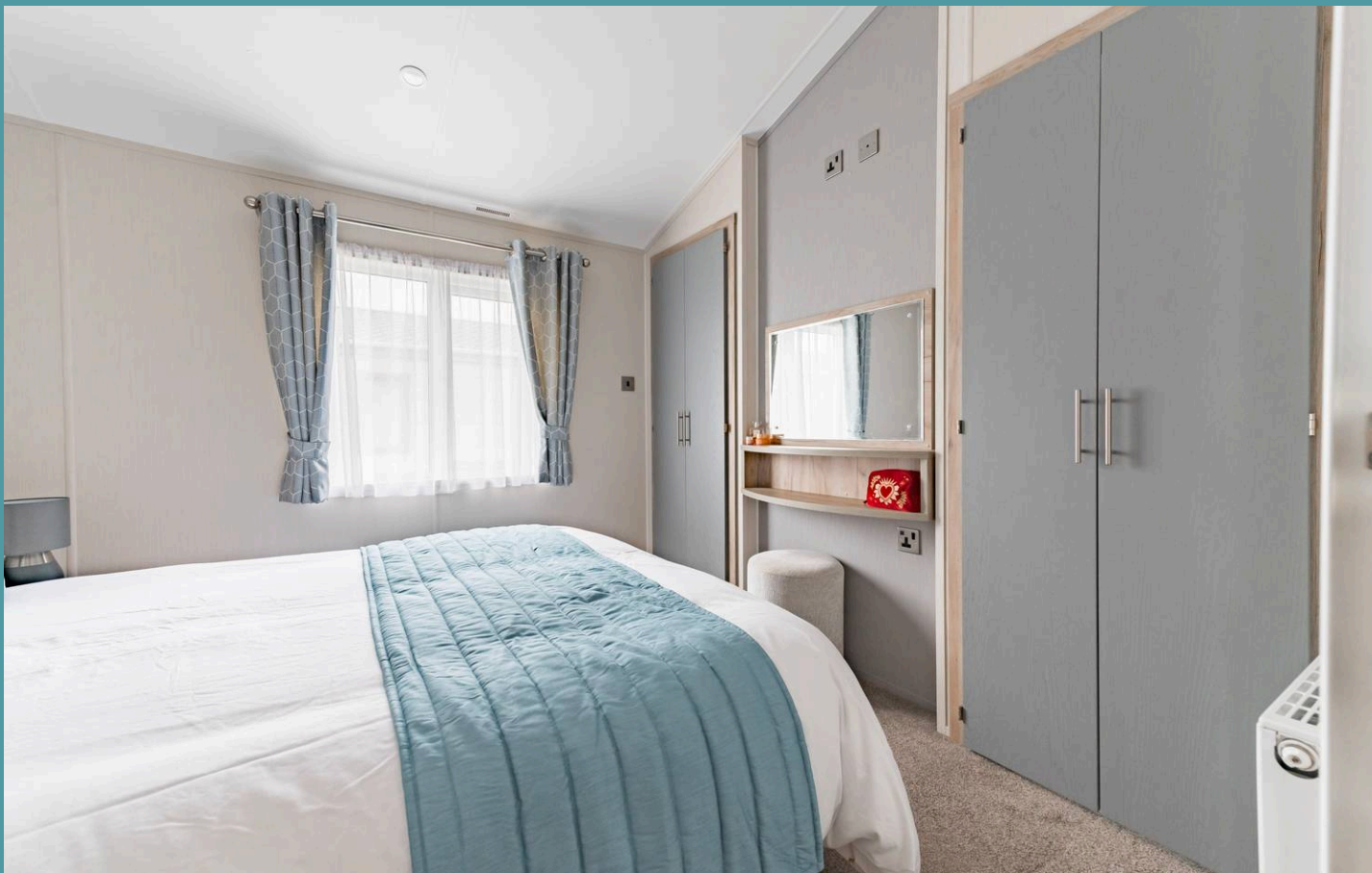
## Location

Pakefield is a quaint suburb in Suffolk located approximately two miles south of the seaside town of Lowestoft. Sat atop the breath-taking cliff and offering astounding panoramic views out to the North Sea, there is no question as to why this charming suburb is so popular. Conveniently situated between Kessingland and Lowestoft, astride the A12, this charming suburb offers an abundance of amenities including Pakefield Beach, perfect for family days out, and Lowestoft Train Station, which lays on the Wherry and East Suffolk Lines, offering services to both Norwich and Ipswich.

Pakefield Caravan Park, situated on Suffolk's Sunrise Coast, offers stunning sea views and direct access to a sandy beach. It serves as a convenient base for exploring the coastal villages and rural gems of Suffolk and Norfolk. A short drive leads to the picturesque Norfolk Broads, renowned for its lakes, rivers, and diverse wildlife. The area also boasts charming pubs and village retreats, providing a perfect blend of relaxation and adventure for visitors.

With a wealth of fantastic facilities, ensuring a delightful experience for all guests. Dive into



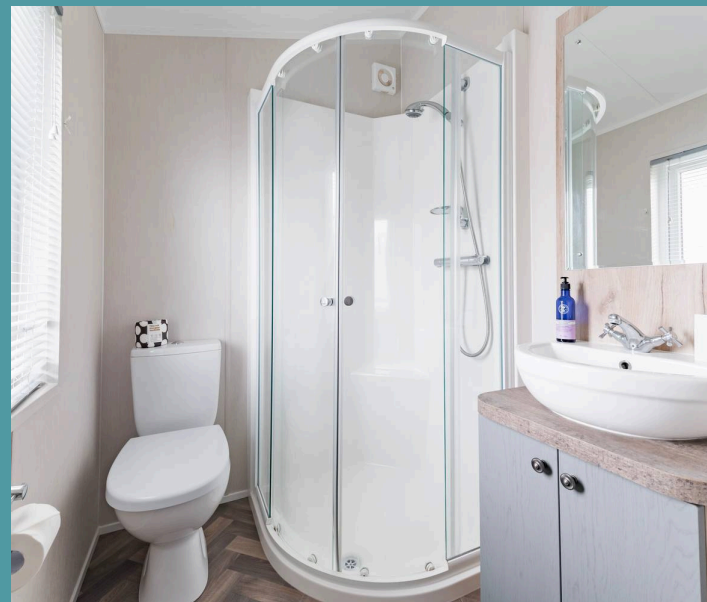
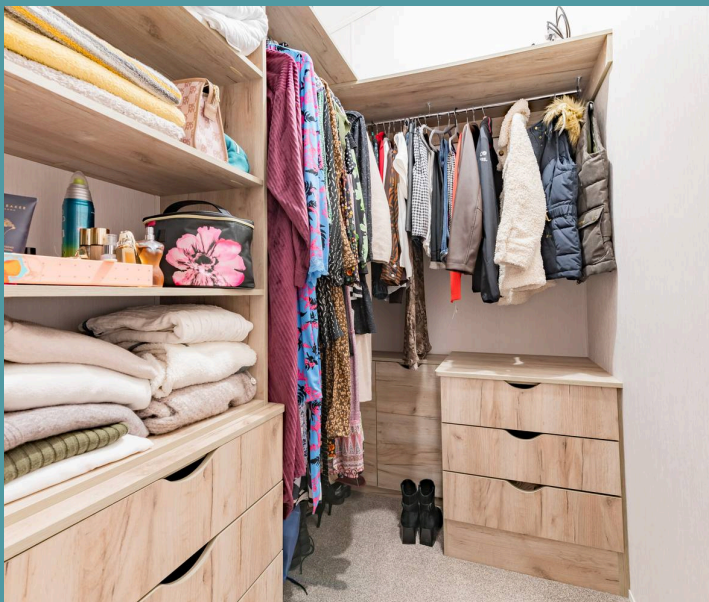


## Pakefield Caravan Park

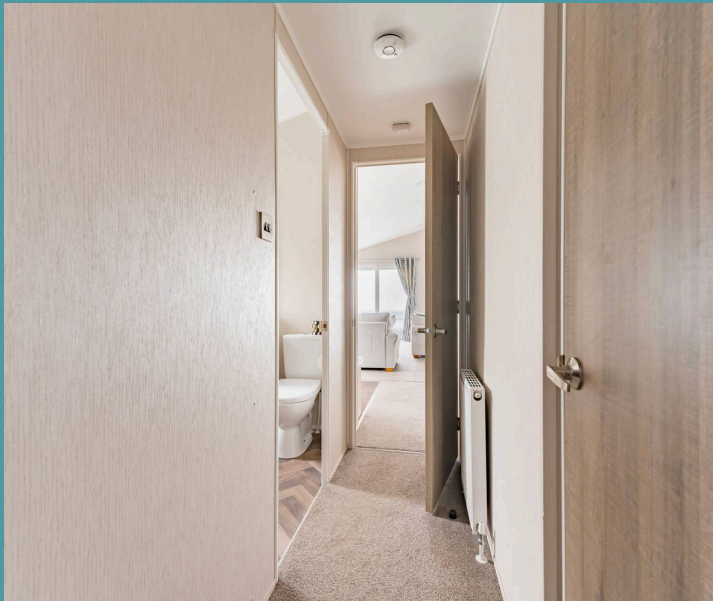
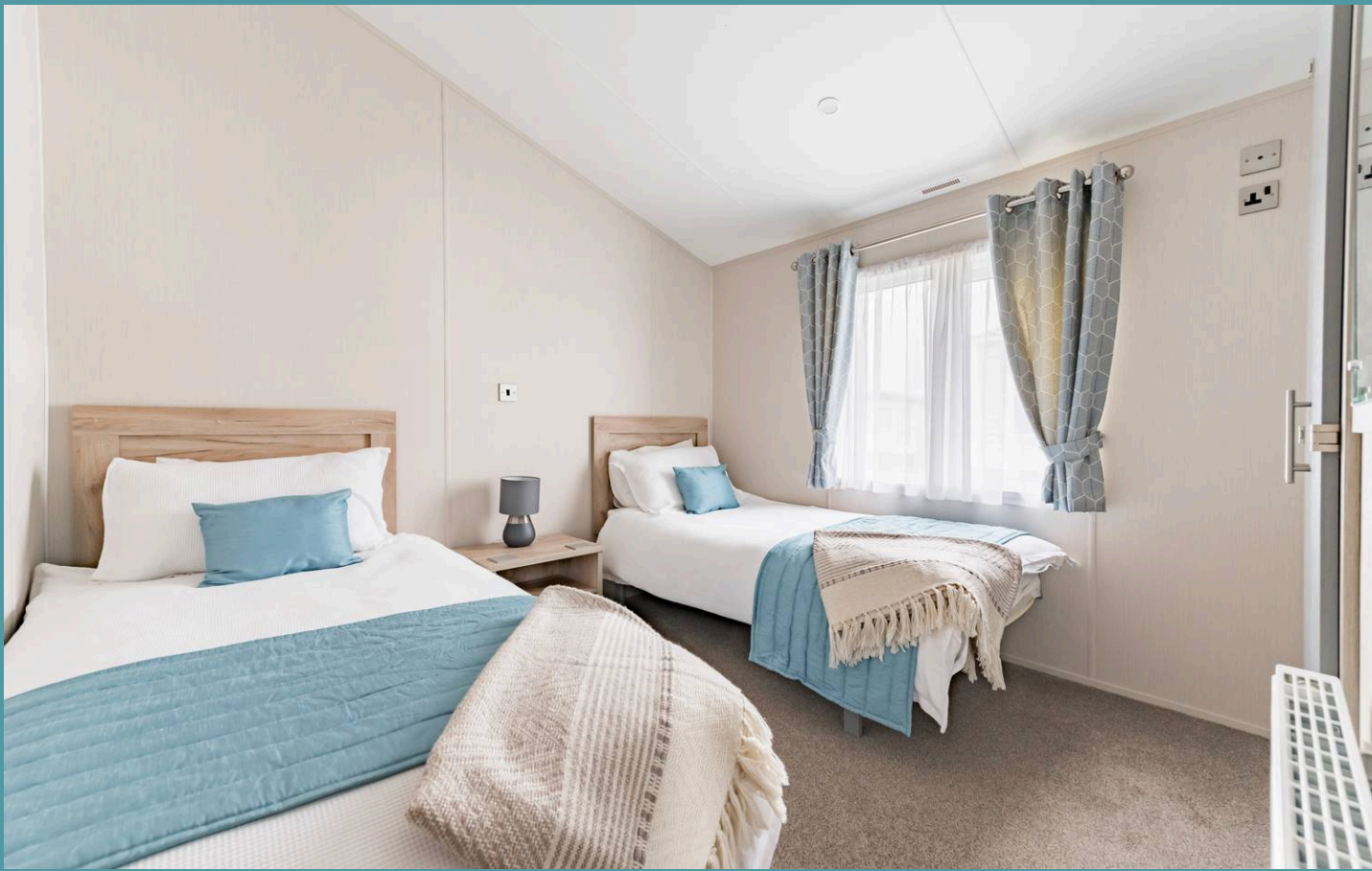
Arbor Lane, Lowestoft

Upon entering, you are greeted by an open-plan kitchen/dining/living room, where relaxation and entertainment converge effortlessly. The contemporary design is accentuated by high-quality fixtures and fittings, with units and integrated appliances to enhance your cooking experience. Whether you are unwinding after a day by the sea or hosting diner parties with loved ones, this flexible area is sure to cater to all your needs.

The accommodation consist of two double bedrooms, one master suite and the other with twin beds, perfect for children or guests. The master suite is complete with a private en-suite and a dressing room, adding a luxury yet convenient touch to your everyday routine. The bathroom completes the accommodation, comprising of a modern three piece suite.



Step outside onto the wrap-around decked terrace, ideal for alfresco dining, morning coffees, or simply relaxing in the afternoon sunshine, this outdoor space offers a seamless extension of the indoor living area, allowing you to enjoy the serene surroundings. Private off-road parking is available at the side of the holiday home.



## Pakefield Caravan Park

Arbor Lane, Lowestoft

### Agents Notes

We understand that this property is leasehold, with 26 years left on the lease.

Ground rent - £6075 yearly.

Connected to mains water, electricity and drainage.

Heating system - LPG.

Open 11 months of the year.

Pet friendly.

- Luxury holiday home in Pakefield Caravan Park
- Open-plan kitchen/dining/living room for relaxation and entertaining, with high-quality fixtures and fittings
- Two bedrooms, a private en-suite, dressing room and family bathroom
- Wrap-around decked terrace suitable for your outdoor seating arrangements during the summer months
- Private off-road parking space
- Cliff-top setting with nearby coastal villages to explore
- Range of fantastic on-site facilities, including a heated outdoor pool, family entertainment and a children's playground
- Season length is 11 months
- Pet friendly
- Close to local shops, healthcare facilities and bus routes