



Netheravon Road, London, W4 2NB

£2,250,000

**WHITMAN & CO.**

SALES · LETTINGS · COMMERCIAL

- Remodelled by an award winning architect
- 56' landscaped garden with side access
- Four bed/three bath
- Sought after residential street
- Exceptional custom wine cellar
- No onward chain

Tenure - Freehold  
Local Authority - Hounslow  
Council Tax - Band G

## THE PROPERTY

An immaculately presented four bedroom home offering an excellent balance of living and entertaining space remodelled by an award winning architect with exceptional attention to detail. This beautiful property comprises a master bedroom with luxury ensuite, three further bedrooms, two further bathrooms, large entrance hall, formal reception room, 25' bespoke kitchen/breakfast room, study, utility room, cloakroom, custom made wine cellar, extensive built in storage, polished hardwood floors and a private 56' landscaped garden with side access. Ideally situated in this sought after tree lined residential street running south of Chiswick High Road, offering close proximity to tube and bus transportation as well as the extensive shopping, bar and restaurant facilities Chiswick has to offer. No chain.

## SITUATION



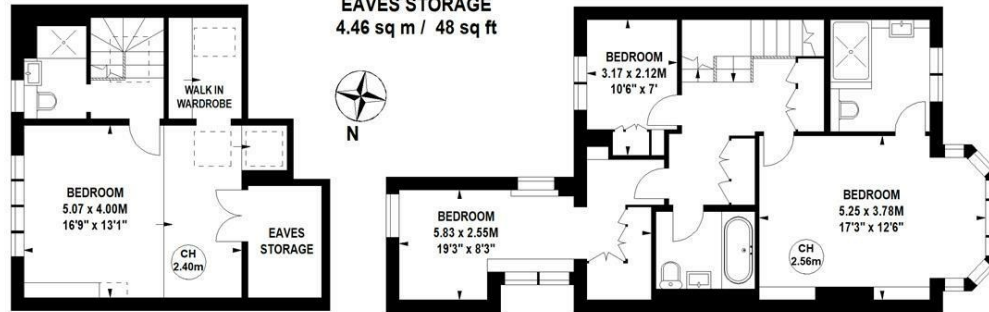
### Netheravon Road, Chiswick, W4

Approximate gross internal area

212.28 sq m / 2285 sq ft  
(INCLUDING EAVES STORAGE)

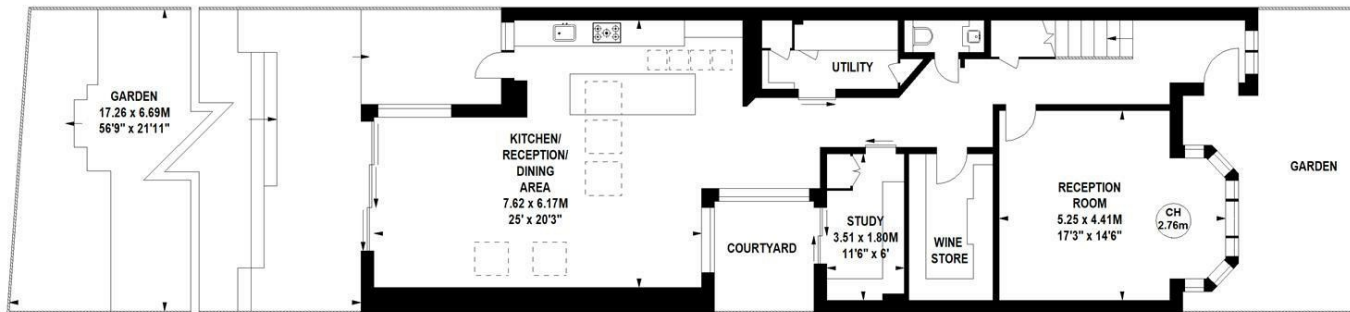
EAVES STORAGE  
4.46 sq m / 48 sq ft

Key :  
CH - Ceiling Height



Second Floor

First Floor



Ground Floor

Not to scale, for guidance only and must not be relied upon as a statement of fact.  
All measurements and areas are approximate only

5-7 Turnham Green Terrace, Chiswick, London, W4 1RG

Tel 020 8747 8800

E-mail [sales@whitmanandco.com](mailto:sales@whitmanandco.com)

Website [www.whitmanandco.com](http://www.whitmanandco.com)