



## CHARMING ONE BEDROOM COTTAGE OVERLOOKING CHORLEYWOOD COMMON

---

Gate Cottages, Old Common Road, Chorleywood, WD3 5LW

**ROBSONS**

# CHARMING ONE BEDROOM END OF TERRACE COTTAGE OVERLOOKING CHORLEYWOOD COMMON

Gate Cottages, Old Common Road, Chorleywood, WD3 5LW

- OPEN PLAN KITCHEN/LIVING ROOM
- BEDROOM
- SHOWER ROOM
- LOFT SPACE
- GARDEN
- NO ONWARD CHAIN
- OVERLOOKING CHORLEYWOOD COMMON

## Description

A charming one bedroom end of terrace cottage overlooking Chorleywood Common. This property is within easy access of Chorleywood Station and the village, and has the added benefit of being chain free.

The modern kitchen has an electric oven and hob, dishwasher, washer/dryer, fridge and is open plan with the living area.







To the first floor is a bedroom to the front with an en-suite shower room which has a towel rail and storage unit.

The first floor also provides access to a good sized loft area which has potential to create a home office (STPP).

The rear garden is mainly laid to lawn with flower beds.

### Location

Chorleywood Village's facilities include a wide choice of boutique shops, coffee houses and restaurants. Marks & Spencer and Waitrose food halls are available in Rickmansworth. The area is also well served for sought after state and private schools for all ages. Leisure facilities include golf courses, cricket, football clubs, horse riding and fitness centres, together with Chorleywood Common and Rickmansworth Aquadrome, providing acres of outdoor space for walks and further activities. The Metropolitan and Main lines at Chorleywood Station offer a frequent service into London and beyond. The M25 is easily accessible via Junctions 17 and 18.

### Additional Information

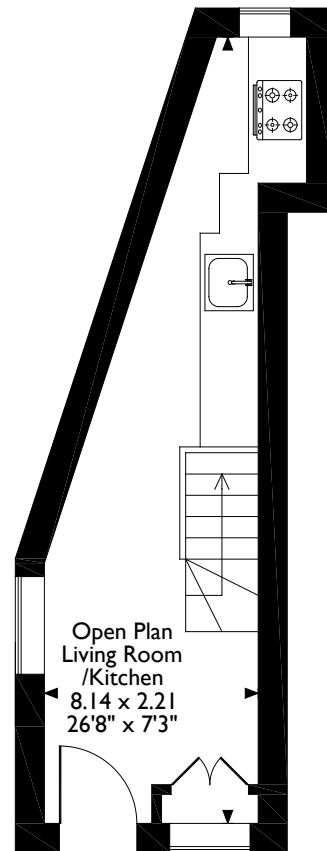
Tenure: Freehold

Local Authority: Three Rivers District Council

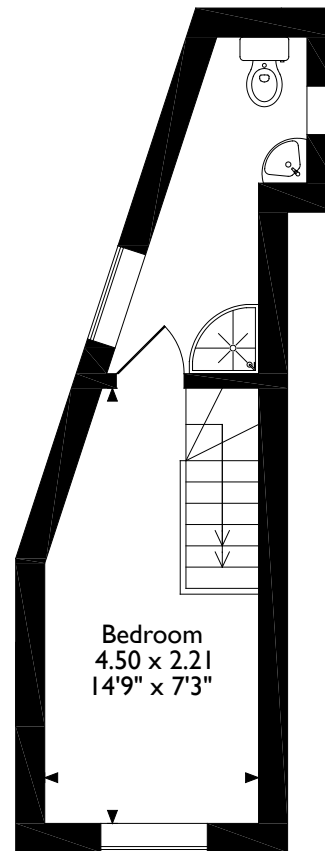
Energy Efficiency Rating: Band D



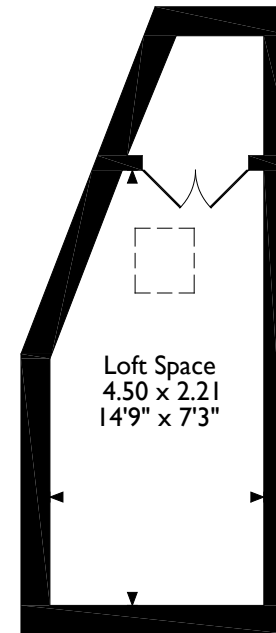
Old Common Road Chorleywood  
Approximate Gross Internal Area  
28 Sq M/299 Sq Ft



**Ground Floor**



**First Floor**



**Second Floor**

Please note that the location of doors, windows and other items are approximate and this floorplan is to be used for illustrative purposes only. Unauthorized reproduction is prohibited.

**ROBSONS**

2 New Parade, Chorleywood, Hertfordshire, WD3 5NJ  
Tel: 01923 285525 Email: [chorleywood@robsonswb.com](mailto:chorleywood@robsonswb.com)

[www.robsonswb.com](http://www.robsonswb.com)

[www.the-londonoffice.co.uk](http://www.the-londonoffice.co.uk)  
40 ST JAMES'S PLACE SW1

Important notice: Robsons, their clients and any joint agents give notice that 1: They are not authorised to make or give any representations or warranties in relation to the property either here or elsewhere, either on their own behalf or on behalf of their client or otherwise. They assume no responsibility for any statement that may be made in these particulars. These particulars do not form part of any offer or contract and must not be relied upon as statements or representations of fact. 2: Any areas, measurements or distances are approximate. Plot sizes and dimensions are taken from Promap and are approximate. The text, photographs and plans are for guidance only and are not necessarily comprehensive. It should not be assumed that the property has all necessary planning, building regulation or other consents and Robsons have not tested any services, equipment or facilities. Purchasers must satisfy themselves by inspection or otherwise.