



Watchfield Court, Sutton Court Road, London, W4 4NE

HEATING & HOT WATER INCLUDED. An immaculately presented one-bedroom flat ideally located in this sought-after mansion block close to all amenities and with the added benefit of a private balcony and off-street parking. Comprising a double bedroom, luxury bathroom, reception room with French windows onto the balcony, silent ceiling fans, fully integrated kitchen with full size fridge freezer & separate washer dryer machines, automatic lift, communal landscaped gardens and a porter. Ideally located just South of Chiswick High Road with its extensive transport links and shopping facilities. Hounslow Council Tax Band D. EPC-C. Furnished. Available now

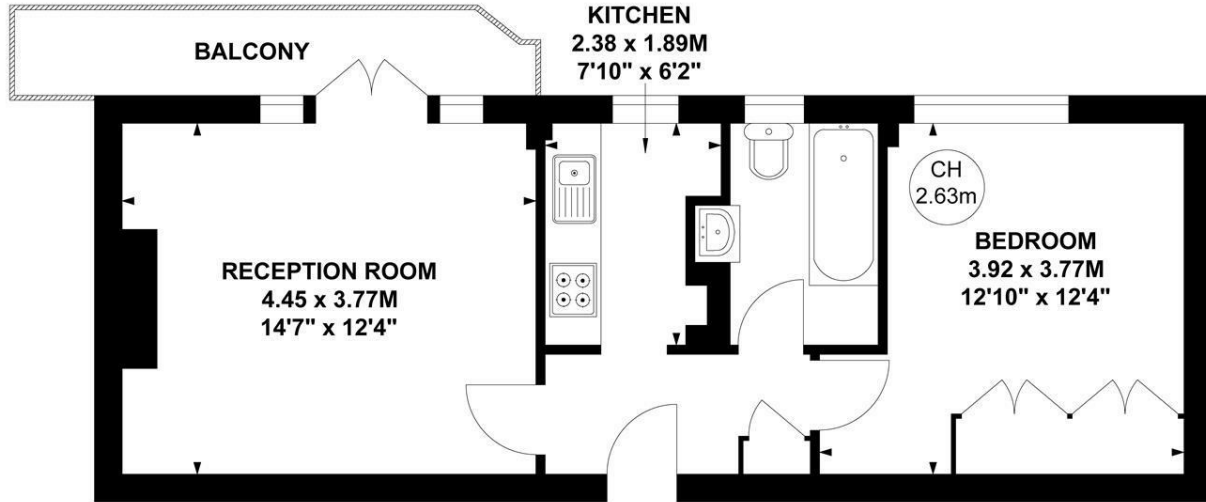
- Excellent location
- Heating & Hot Water Included
- Private balcony
- Separate washer & dryer machines
- Very well presented apartment
- Automatic lift and porter
- Sought-after mansion block
- Furnished
- Communal gardens and off street parking
- Available now

£2,100 Per Calendar Month

Watchfield Court, W4

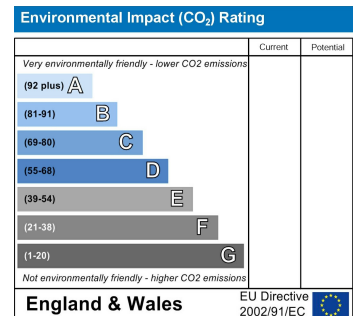
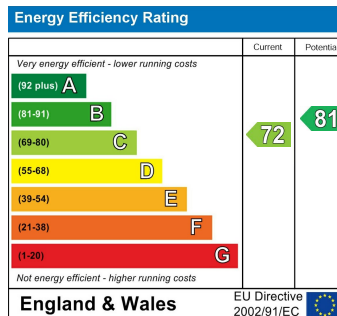
Approximate gross internal area
43.05 sq m / 463 sq ft

Key :
CH - Ceiling Height



Third Floor

Not to scale, for guidance only and must not be relied upon as a statement of fact.
All measurements and areas are approximate only



5-7 Turnham Green Terrace, Chiswick, London, W4 1RG

Tel 020 8747 8800

E-mail lettings@whitmanandco.com

Website www.whitmanandco.com