



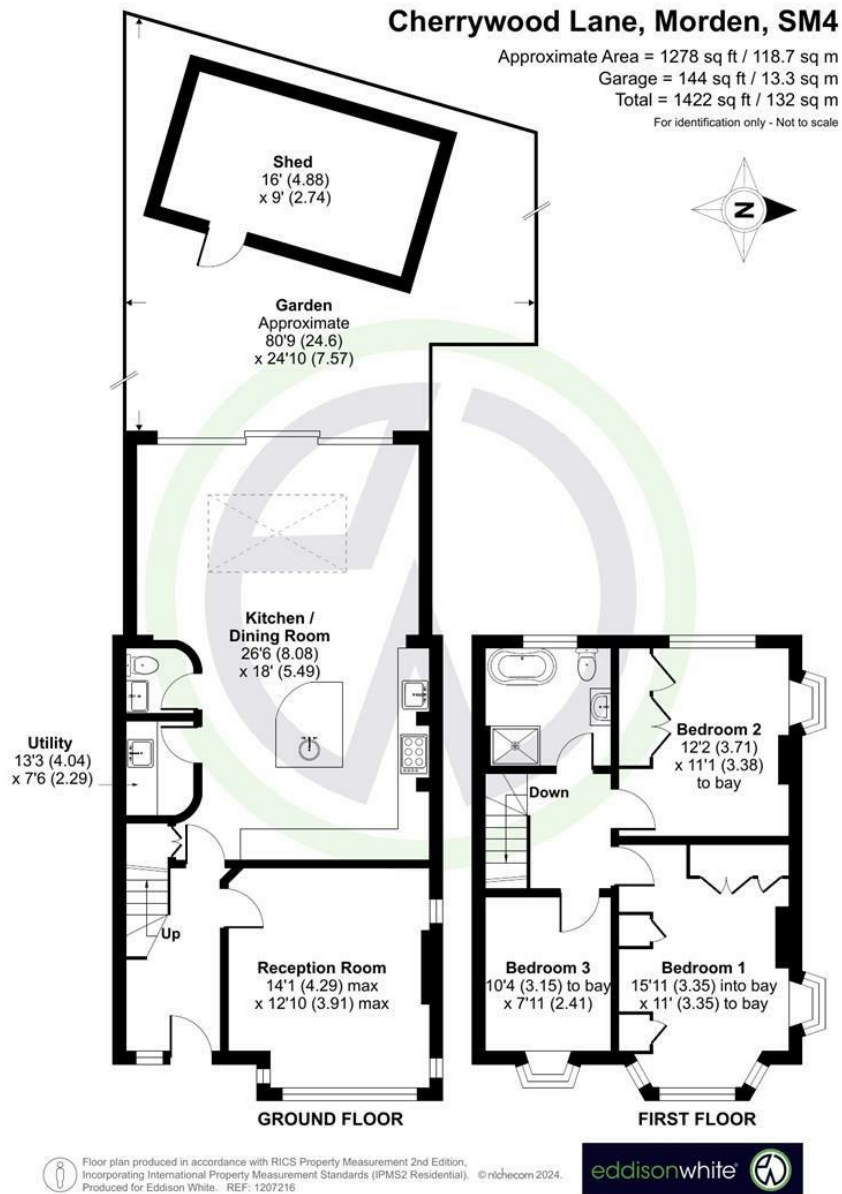
## Cherrywood Lane, Morden

Guide Price £825,000 Freehold

Freehold - End of Terrace 'Blay Style' House - 3 Bedrooms - W.C  
0.8 Miles From Tube Station - Nearby Outstanding Schools - Utility  
Beautifully Presented - Off Street Parking - Garden - EPC: C  
Kitchen Extension - Large Living Accommodation - Bathroom



# Cherrywood Lane, Morden



London Borough of Merton  
 Tax Band E  
 Freehold



Energy Efficiency Rating		
	Current	Potential
Very energy efficient - lower running costs		
(92 plus) <b>A</b>		
(81-91) <b>B</b>		86
(69-80) <b>C</b>		70
(55-68) <b>D</b>		
(39-54) <b>E</b>		
(21-38) <b>F</b>		
(1-20) <b>G</b>		
Not energy efficient - higher running costs		
<b>England &amp; Wales</b>	EU Directive 2002/91/EC	

Environmental Impact (CO <sub>2</sub> ) Rating		
	Current	Potential
Very environmentally friendly - lower CO <sub>2</sub> emissions		
(82 plus) <b>A</b>		
(81-81) <b>B</b>		
(69-80) <b>C</b>		
(55-68) <b>D</b>		
(39-54) <b>E</b>		
(21-38) <b>F</b>		
(1-20) <b>G</b>		
Not environmentally friendly - higher CO <sub>2</sub> emissions		
<b>England &amp; Wales</b>	EU Directive 2002/91/EC	

These details and any pictures or plans represent our opinion and are given in good faith for guidance only. They must not be construed as statements or fact. These particulars do not constitute part of an offer or contract. We have not tested the services, appliances or specified fittings and would highly recommend a purchaser to carry out their own survey on the property.