



South Grove House, Highgate Village, N6

£830,000 Share of Freehold



44 highgate high street, highgate village, london, n6 5hx
telephone 020 8348 8000 facsimile 020 8348 8232
email highgate@litchfields.com litchfields.com
offices also in hampstead garden suburb & crouch end

We are pleased to offer this 2 double bedroom apartment, situated on the top floor (3rd floor with lift) of this very well maintained and sought after purpose built block in the heart of Highgate Village. This elegant and spacious flat provides stylish entertaining and living space with superb views. The block offers non-allocated off street parking and there is the added benefit of a day porter. Located at the end of South Grove the flat is well positioned for quick access to all the amenities of Highgate High Street, transport links to central London and the City and the delights of Waterlow Park, Kenwood and the Heath on the doorstep. Offered for sale chain free and with a share of the freehold. EPC - D



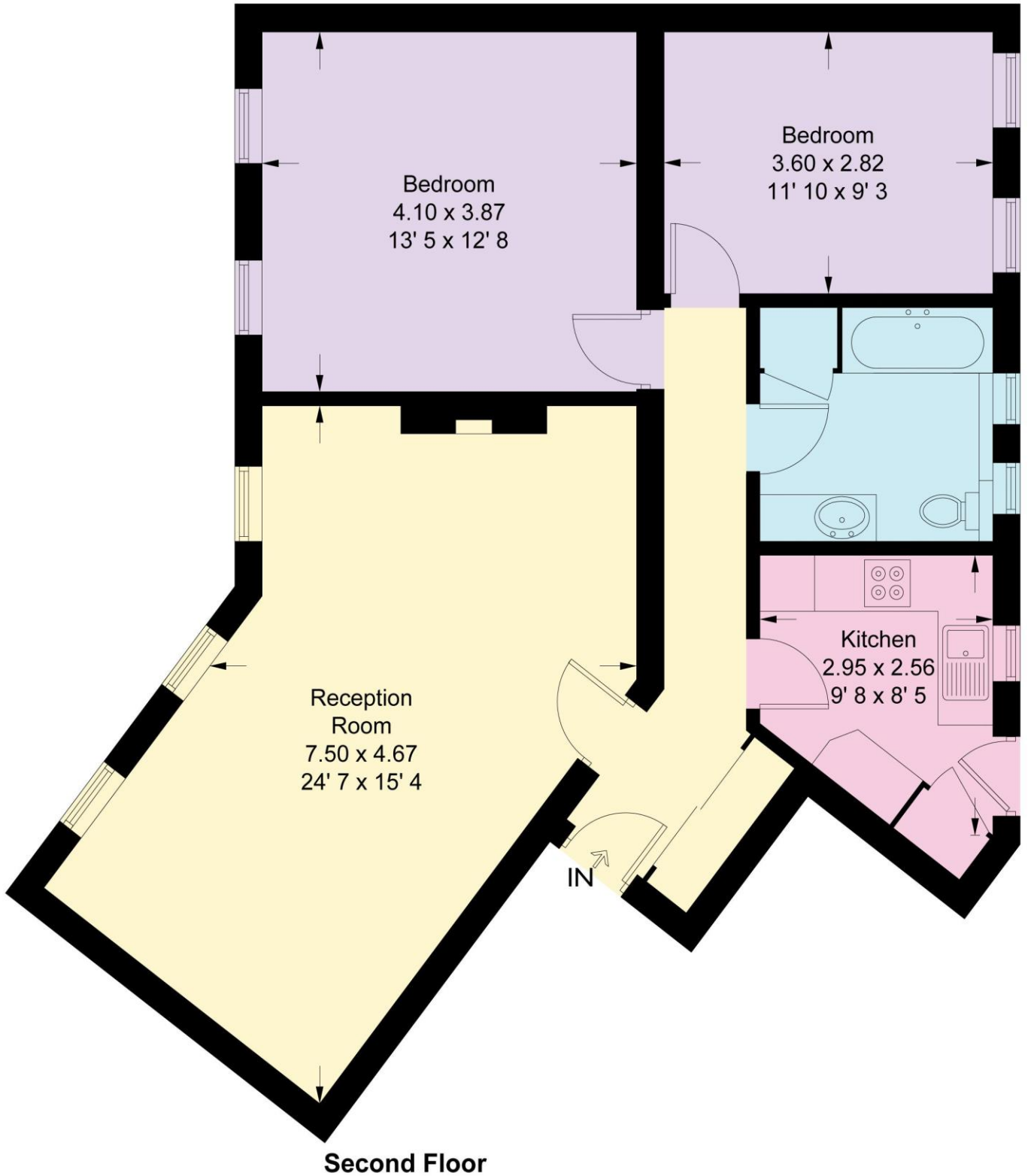
Sought after Highgate Village
 purpose-built block
 Top floor (3rd with lift)
 Spacious reception room
 2 double bedrooms
 Kitchen
 Bathroom
 Off street parking Day porter
 Share of freehold & chain free Close to
 Village, Waterlow Park, transport and
 Hampstead Heath
 EPC - D





South Grove House

Approximate Gross Internal Area = 887 sq ft / 82.4 sq m



Not to scale, for guidance only and must not be relied upon as a statement of fact
All measurements and areas are approximate only and have been prepared in
accordance with the current edition of the RICS Code of Measuring Practice