

Jasmine Grove, SE20 | £285,000

02087029333

crystalpalace@pedderproperty.com

pedder
We live local



In General

- Two bedroom ground floor apartment
- No onward chain
- Excellent condition
- Dual aspect reception with a Juliette balcony
- Residents parking
- Quiet location

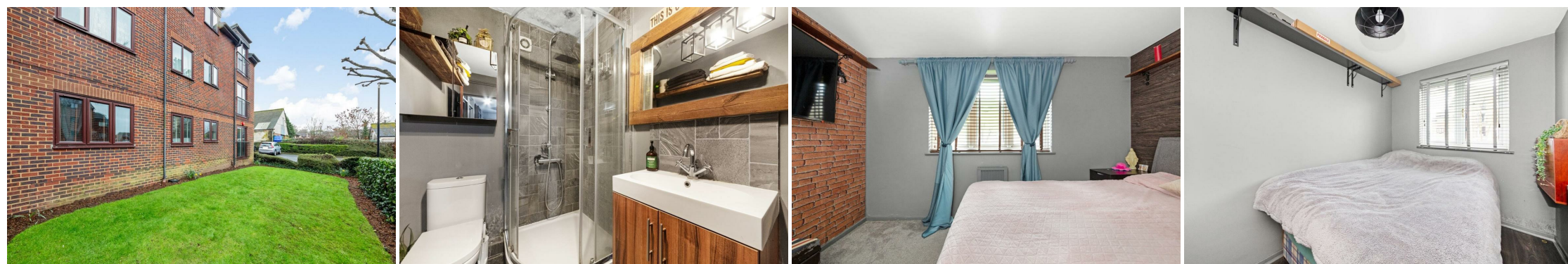
In Detail

A smart two bedroom ground floor purpose built apartment quietly tucked away at the rear of a small low-rise development nearby Anerley station.

The property has been upgraded by the current owner to offer an immediately enjoyable space and also includes the benefit of no onward chain. The main living area is a 16ft 7 double aspect reception room with a shuttered Juliet balcony overlooking well kept communal grounds, and features replacement solid wood flooring and enough room to dine. A separate kitchen has plenty of work and storage space, whilst the shower room has also been modernised. Further benefits include fitted hallway storage and residents parking.

This location is well placed for train links including Penge East / West, Elmers End, and Anerley. Also, proximity to Crystal Palace Park and the High Street.

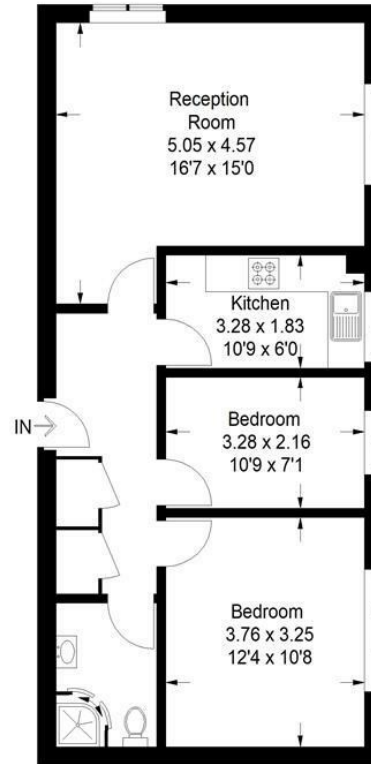
EPC: E | Council Tax Band: C | Lease: 89 years remaining | SC: £1,558.20 | GR: £167.24 | BI: £456.76



Floorplan

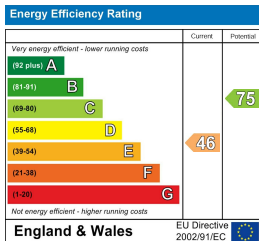
Readman Court, SE20

Approximate Gross Internal Area
60.0 sq m / 646 sq ft



Ground Floor

Copyright www.pedderproperty.com © 2024
These plans are for representation purposes only as defined by RICS - Code of Measuring Practice. Not drawn to Scale. Windows and door openings are approximate. Please check all dimensions, shapes and compass bearings before making any decisions reliant upon them.



Pedder Property Ltd trading as Pedder for themselves and for the vendor/landlord of this property whose agents they are, give notice that (1) these particulars do not constitute any part of an offer or contract, (2) all statements contained within these particulars are made without responsibility on the part of Pedder or the vendor/landlord, (3) whilst made in good faith, none of the statements contained within these particulars are to be relied upon as a statement of representation or fact, (4) any intending purchaser/tenant must satisfy him/herself by inspection or otherwise as to the correctness of each of the statements contained within these particulars, (5) the vendor/landlord does not make or give either Pedder or any person in their employment any authority to make or give representation or warranty whatsoever in relation to this property.