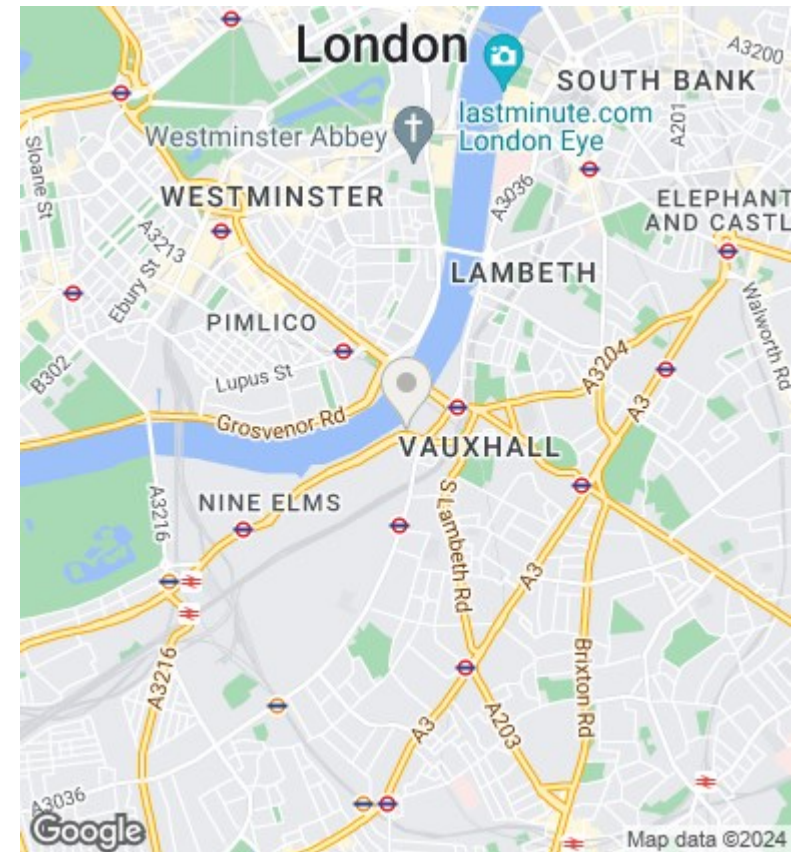
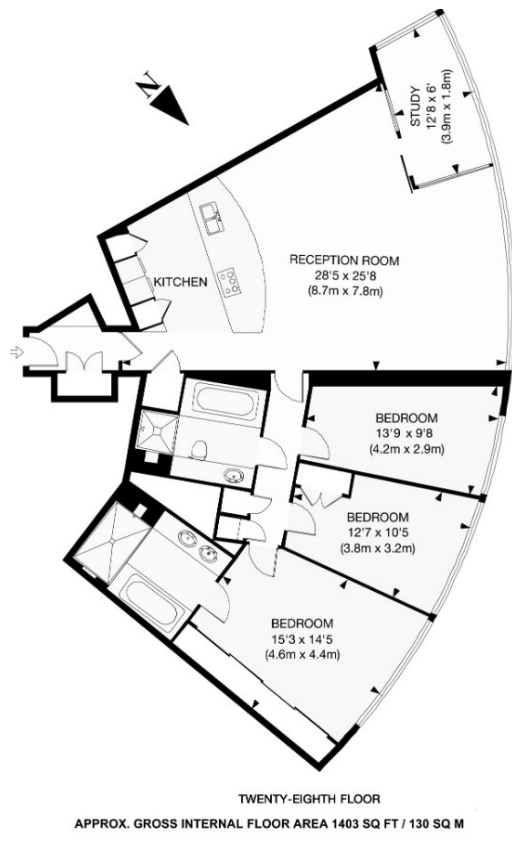




## The Tower, 1 St George Wharf, Vauxhall SW8 2BW

£2,500,000

- 24 HOUR CONCIERGE SERVICE
- UNDERFLOOR HEATING AND AIR COOLING
- RESIDENCE BUSINESS LOUNGE
- GYM AND SWIMMING POOL OVERLOOKING RIVER
- VIDEO VIEWING AVAILABLE
- SMART HOME SYSTEM
- MEETING ROOM / DINNING ROOM
- RIVER VIEWS
- ALLOCATED PARKING SPACE
- CINEMA



## Viewings

Viewings by arrangement only.  
Call 02077225022 to make an appointment.

## Council Tax Band

B

## EPC Rating:

B

Energy Efficiency Rating		Current	Potential
<i>Very energy efficient - lower running costs</i>			
(92 plus)	A		
(81-91)	B	82	82
(69-80)	C		
(55-68)	D		
(39-54)	E		
(21-38)	F		
(1-20)	G		
<i>Not energy efficient - higher running costs</i>			
<b>England &amp; Wales</b>		EU Directive 2002/91/EC	